

# WORLD-BEAM® QS30 – Universal Voltage



## Quick Start Guide

*Self-Contained, Photoelectric Sensors in Universal-Style Housing*

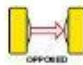

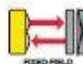
For complete technical information about this product, including installation instructions, application requirements and guidelines, EU Declaration of Conformity, technical specifications, and accessories, see [www.bannerengineering.com](http://www.bannerengineering.com) and search 119166.



### WARNING: Not To Be Used for Personnel Protection

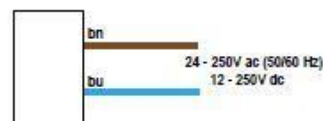
**Never use this device as a sensing device for personnel protection. Doing so could lead to serious injury or death.** This device does not include the self-checking redundant circuitry necessary to allow its use in personnel safety applications. A sensor failure or malfunction can cause either an energized or de-energized sensor output condition.

## Models

Sensing Mode	Model	Range	LED	Output
 OPPOSED	QS303E Emitter	60 m (200 ft)	Infrared, 875 nm Effective Beam: 18 mm (0.7 in)	-
	QS30VR3R Receiver	60 m (200 ft)	-	SPDT
 POLAR RETRO	QS30VR3LP	8 m (26 ft) <sup>2</sup>	Visible red, 630 nm	
 RETRO FIELD	QS30VR3FF200	200 mm (7.9 in)	Visible red, 680 nm	
	QS30VR3FF400	400 mm (15.7 in)		
	QS30VR3FF600	600 mm (23.6 in)		

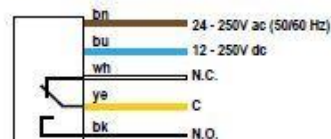
## Wiring Diagrams

### Cabled Emitters



### Other Cabled Models

Cable and QPMA hookups are functionally identical.



- <sup>1</sup> Standard 2 m (6.5 ft) cable models are listed.
- For 9 m (30 ft) integral cable: add suffix "W/30" (for example, QS303E W/30).
  - 5-pin Micro-style 152 mm (6 in) cable: add "QPMA" (for example, QS303EQPMA).
- <sup>2</sup> Range is measured using a model BRT-84 retroreflector.

