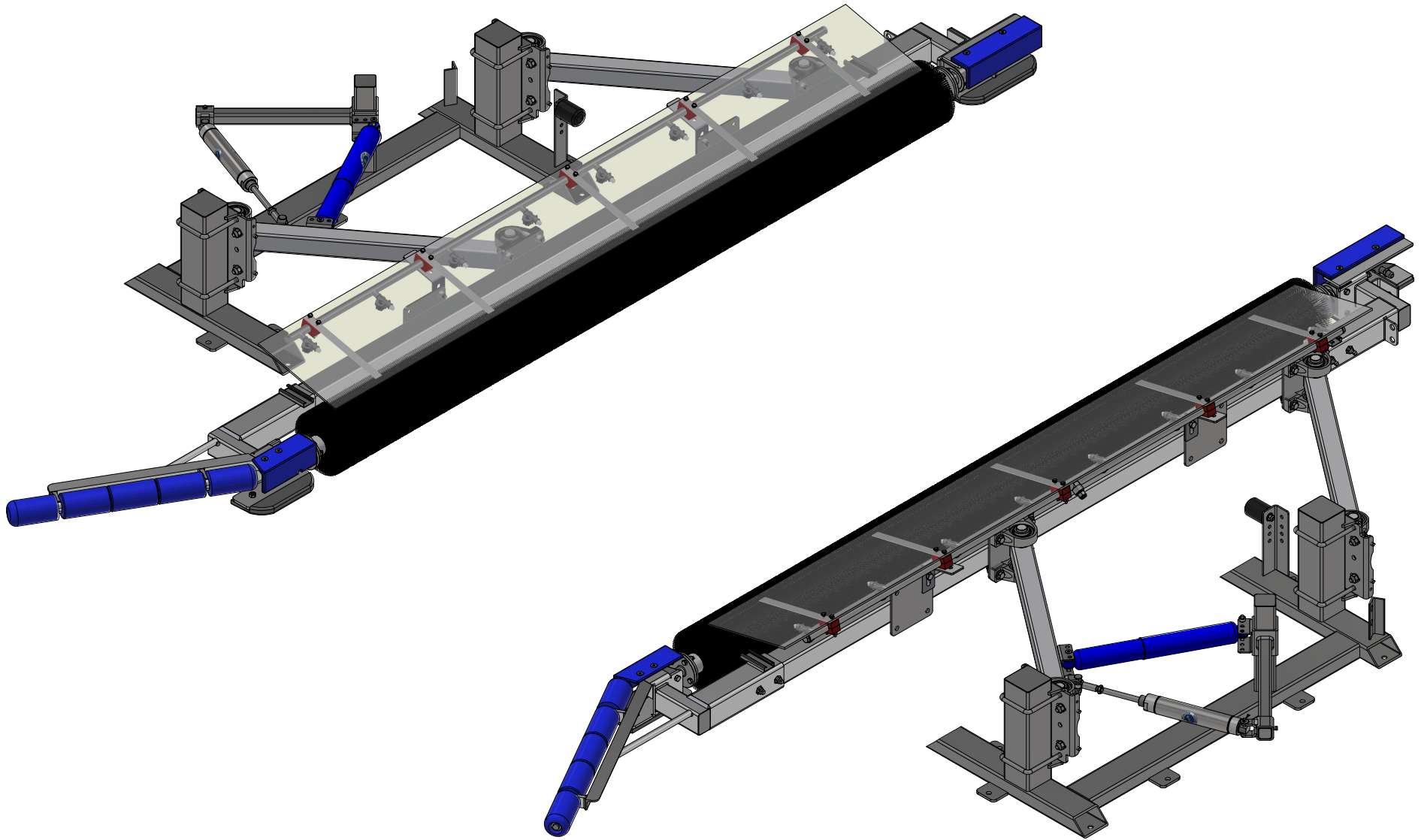


TB4 - Tire Dressing Applicator [Hydraulic]



AVW EQUIPMENT CO., INC.
105 S. 9TH AVENUE
MAYWOOD, IL 60153
Tel: 708-343-7738 Fax: 708-343-9065
WWW.AVWEQUIPMENT.COM

- COMPANY PROPRIETARY NOTE -

THIS DRAWING AND ITS DESIGNS ARE PROPERTY OF AVW EQUIPMENT CO. & IT IS NOT TO BE USED OR REPRODUCED WITHOUT THE PERMISSION FROM AVW CO.

DRAWN BY

Ljubomir

CUSTOMER: Tommy's Car Wash

CHECKED BY

PROJECT: Tommy's CW Tire Shine

QTY

DESCRIPTION: Tire Dressing Applicator [Hydraulic]

RELEASE DATE

7/13/2021

PART NUMBER: TB4

REV#

DIMENSION ARE IN INCHES & PROVIDED PRIOR TO SURFACE TREATMENTS, UNLESS NOTED.

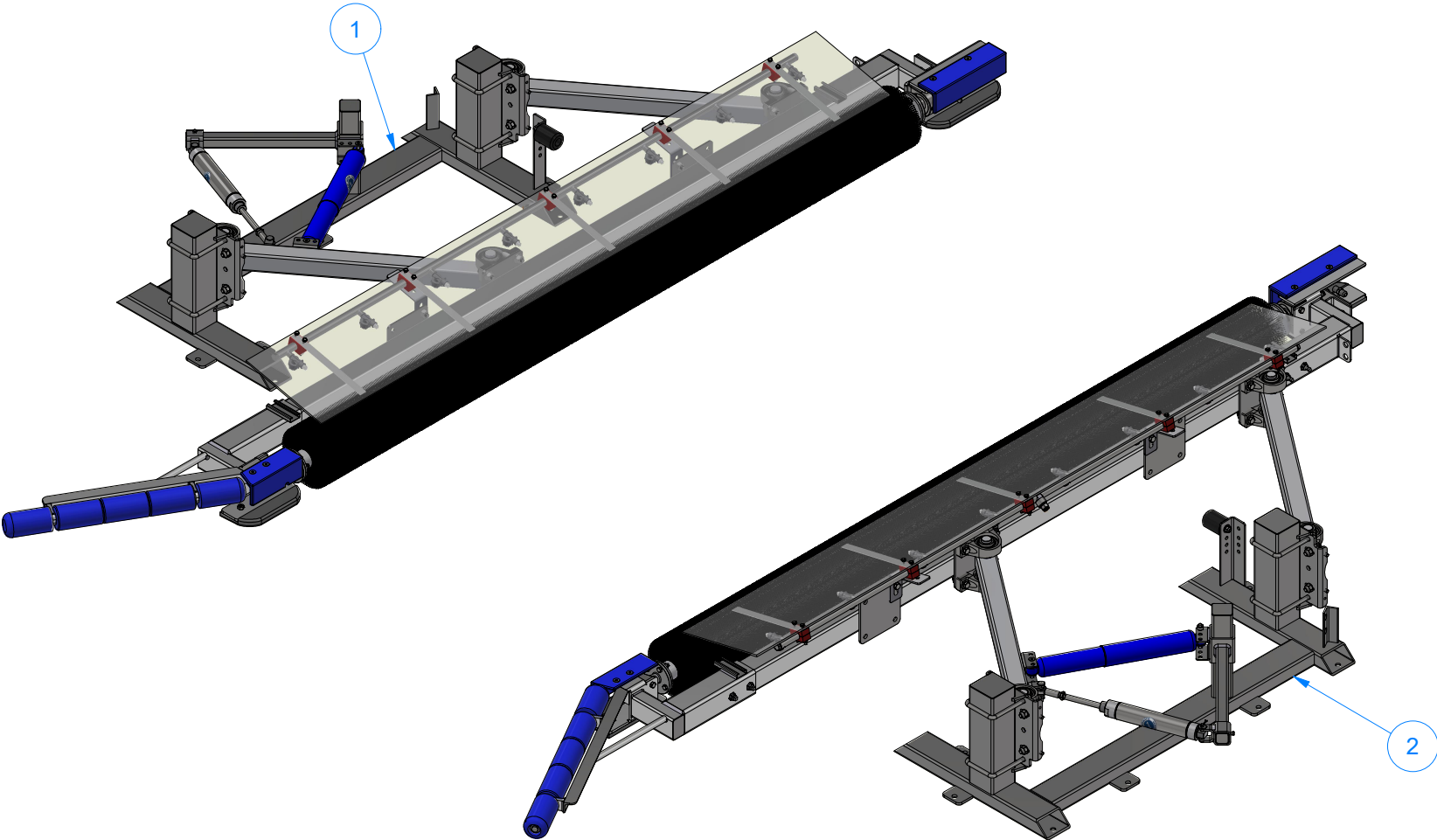
SIZE A

EST WEIGHT:

SHEET 1 of 42

PATH:L:\Designs\Product Lines\Tire Washer\Tire Shine\TB4 - Tire Dressing Applicator [Hydraulic]\TB4 - Tire Dressing Applicator [Hydraulic].iam

Parts List		
ITEM	QTY	DESCRIPTION
1	1	Tire Dressing Applicator [Driver Side]
2	1	Tire Dressing Applicator [Passenger Side]



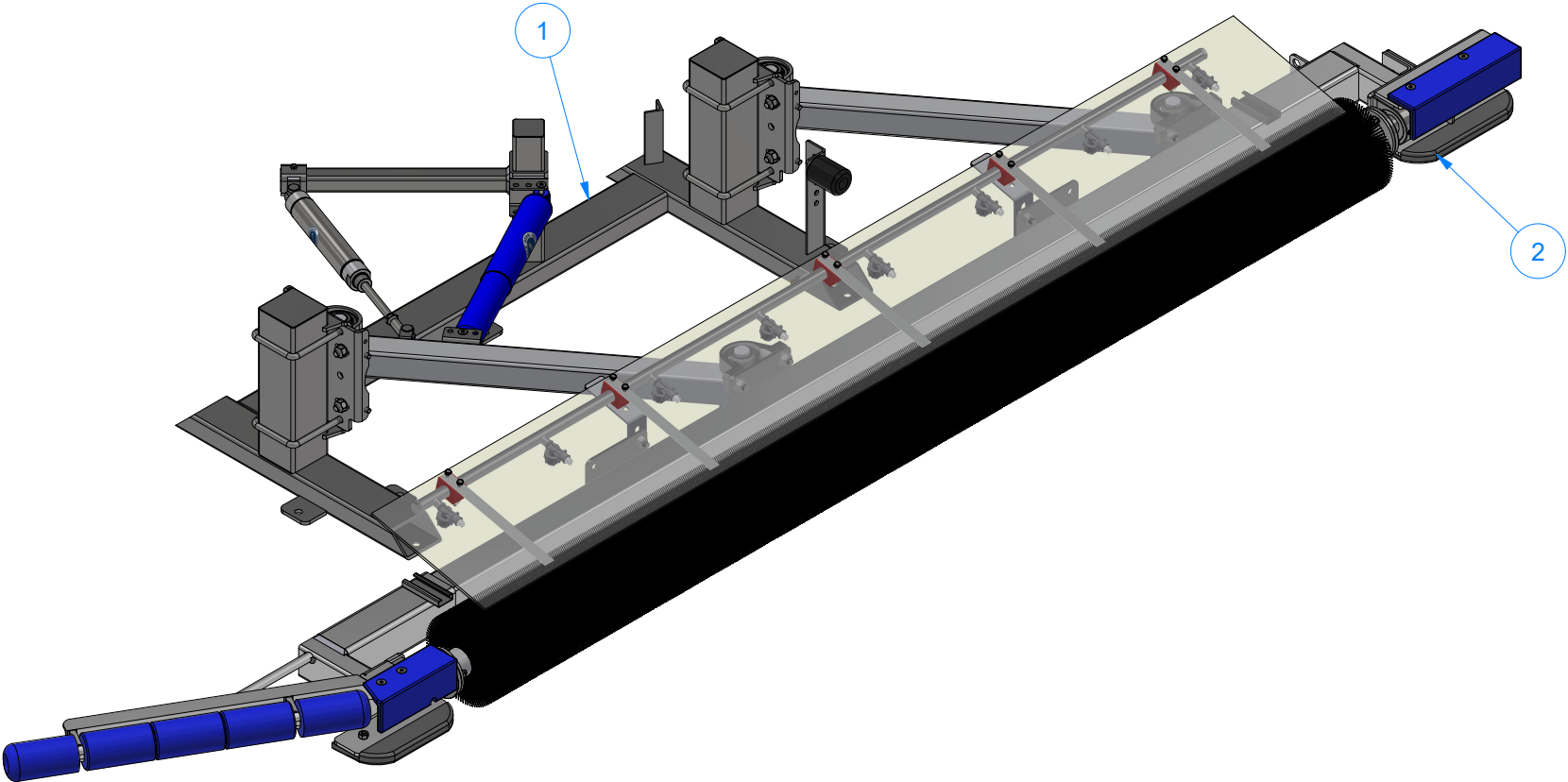
AVW EQUIPMENT CO., INC.
105 S. 9TH AVENUE
MAYWOOD, IL 60153
Tel: 708-343-7738 Fax: 708-343-9065
WWW.AVWEQUIPMENT.COM

- COMPANY PROPRIETARY NOTE -
THIS DRAWING AND ITS DESIGNS ARE PROPERTY OF AVW EQUIPMENT CO. &
IT IS NOT TO BE USED OR REPRODUCED WITHOUT THE PERMISSION FROM AVW CO.

DRAWN BY	Ljubomir	CUSTOMER: Tommy's Car Wash	
CHECKED BY		PROJECT: Tommy's CW Tire Shine	
QTY		DESCRIPTION: Tire Dressing Applicator [Hydraulic]	
RELEASE DATE	7/13/2021	PART NUMBER: TB4	REV#
DIMENSION ARE IN INCHES & PROVIDED PRIOR TO SURFACE TREATMENTS, UNLESS NOTED.		SIZE A	EST WEIGHT:
			SHEET 2 of 42

TB4A - Tire Dressing Applicator [Driver Side]

Parts List		
ITEM	QTY	DESCRIPTION
1	1	Tire Dressing Frame Assembly [Driver]
2	1	Tire Brush Assembly [Driver]



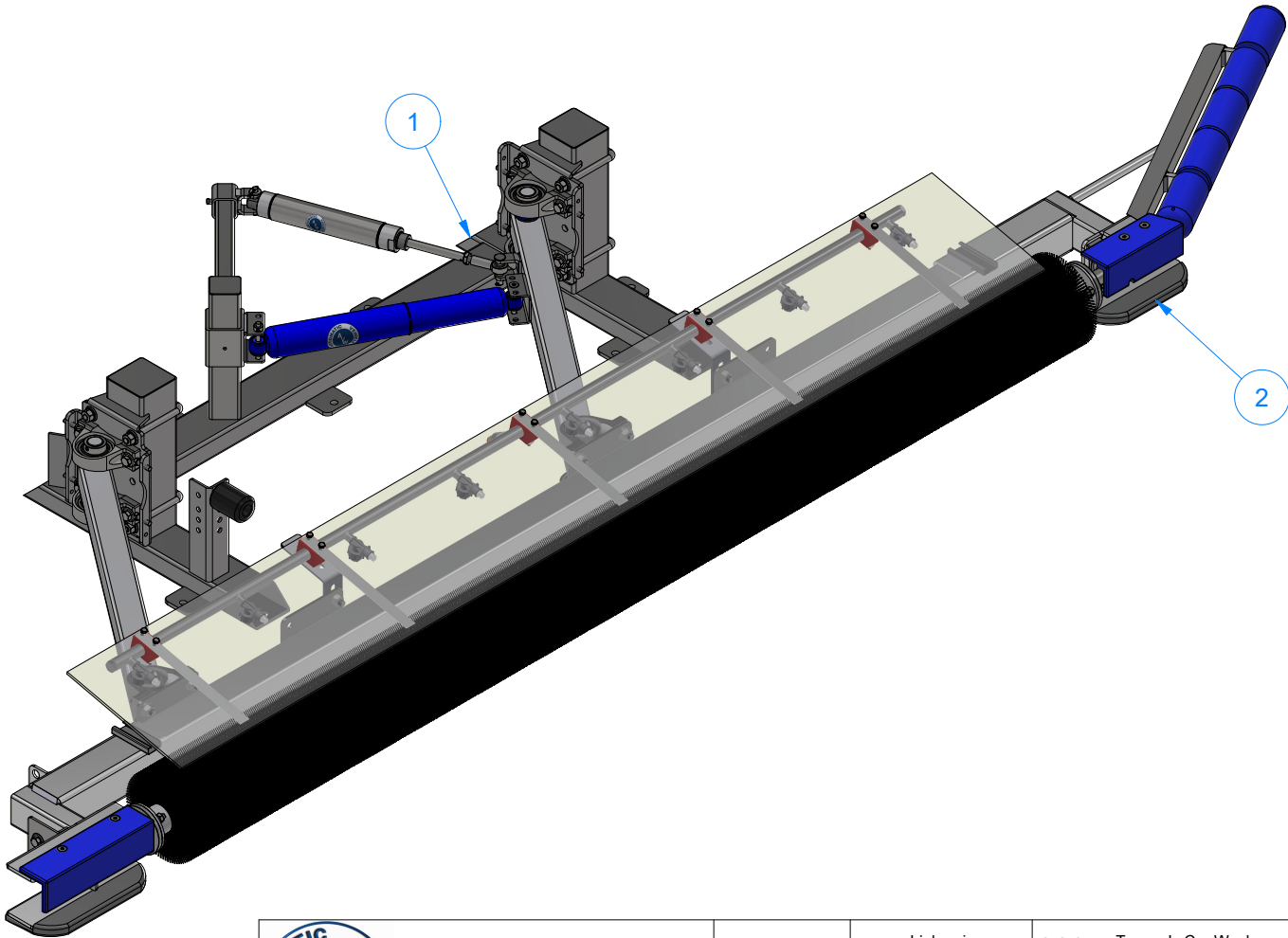
AVW EQUIPMENT CO., INC.
105 S. 9TH AVENUE
MAYWOOD, IL 60153
Tel: 708-343-7738 Fax: 708-343-9065
WWW.AVWEQUIPMENT.COM

- COMPANY PROPRIETARY NOTE -
THIS DRAWING AND ITS DESIGNS ARE PROPERTY OF AVW EQUIPMENT CO. &
IT IS NOT TO BE USED OR REPRODUCED WITHOUT THE PERMISSION FROM AVW CO.

DRAWN BY	Ljubomir	CUSTOMER: Tommy's Car Wash	
CHECKED BY		PROJECT: Tommy's CW Tire Shine	
QTY		DESCRIPTION: Tire Dressing Applicator [Driver Side]	
RELEASE DATE	7/13/2021	PART NUMBER: TB4A	REV#
DIMENSION ARE IN INCHES & PROVIDED PRIOR TO SURFACE TREATMENTS, UNLESS NOTED.		SIZE A	EST WEIGHT:
			SHEET 3 of 42

TB4B - Tire Dressing Applicator [Passenger Side]

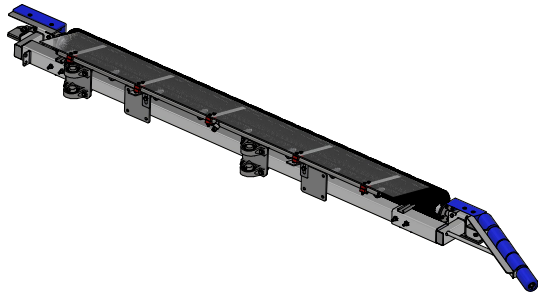
Parts List		
ITEM	QTY	DESCRIPTION
1	1	Tire Dressing Frame Assembly [Passenger]
2	1	Tire Brush Assembly [Passenger]



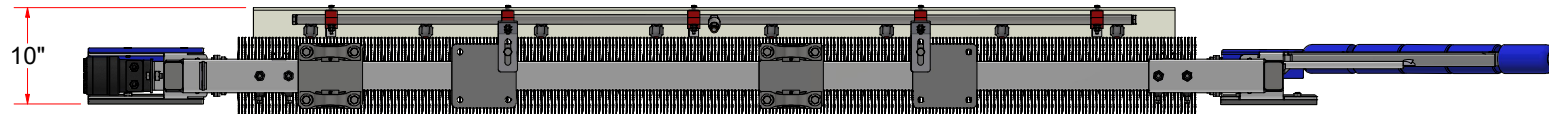
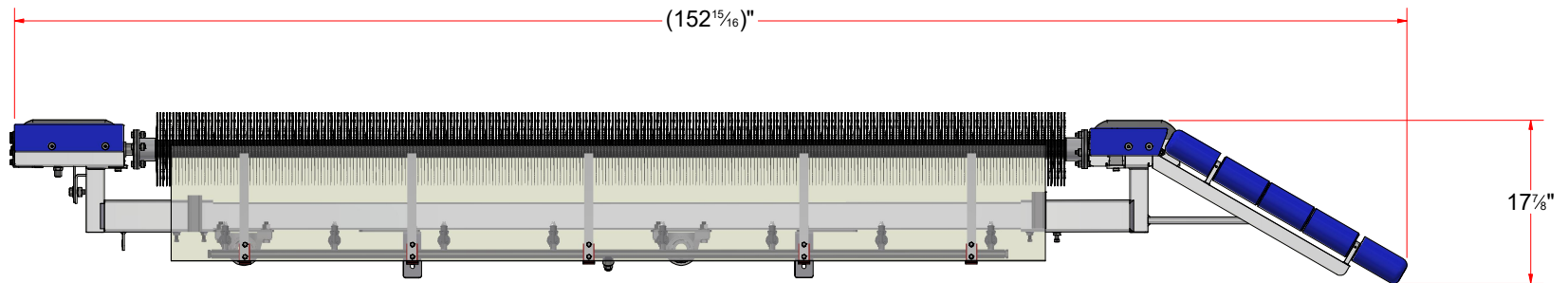
AVW EQUIPMENT CO., INC.
105 S. 9TH AVENUE
MAYWOOD, IL 60153
Tel: 708-343-7738 Fax: 708-343-9065
WWW.AVWEQUIPMENT.COM

- COMPANY PROPRIETARY NOTE -
THIS DRAWING AND ITS DESIGNS ARE PROPERTY OF AVW EQUIPMENT CO. &
IT IS NOT TO BE USED OR REPRODUCED WITHOUT THE PERMISSION FROM AVW CO.

DRAWN BY	Ljubomir	CUSTOMER: Tommy's Car Wash	
CHECKED BY		PROJECT: Tommy's CW Tire Shine	
QTY		DESCRIPTION: Tire Dressing Applicator [Passenger Side]	
RELEASE DATE	7/13/2021	PART NUMBER: TB4B	REV#
DIMENSION ARE IN INCHES & PROVIDED PRIOR TO SURFACE TREATMENTS, UNLESS NOTED.		SIZE A	EST WEIGHT:
			SHEET 4 of 42



TB4AA - Tire Brush Assembly [Driver]



AVW EQUIPMENT CO., INC.
105 S. 9TH AVENUE
MAYWOOD, IL 60153
Tel: 708-343-7738 Fax: 708-343-9065
WWW.AVWEQUIPMENT.COM

- COMPANY PROPRIETARY NOTE -

THIS DRAWING AND ITS DESIGNS ARE PROPERTY OF AVW EQUIPMENT CO. & IT IS NOT TO BE USED OR REPRODUCED WITHOUT THE PERMISSION FROM AVW CO.

DRAWN BY

Ljubomir

CUSTOMER: Tommy's Car Wash

CHECKED BY

PROJECT: Tommy's CW Tire Shine

QTY

DESCRIPTION: Tire Brush Assembly [Driver]

RELEASE DATE

7/13/2021

PART NUMBER: TB4AA

REV#

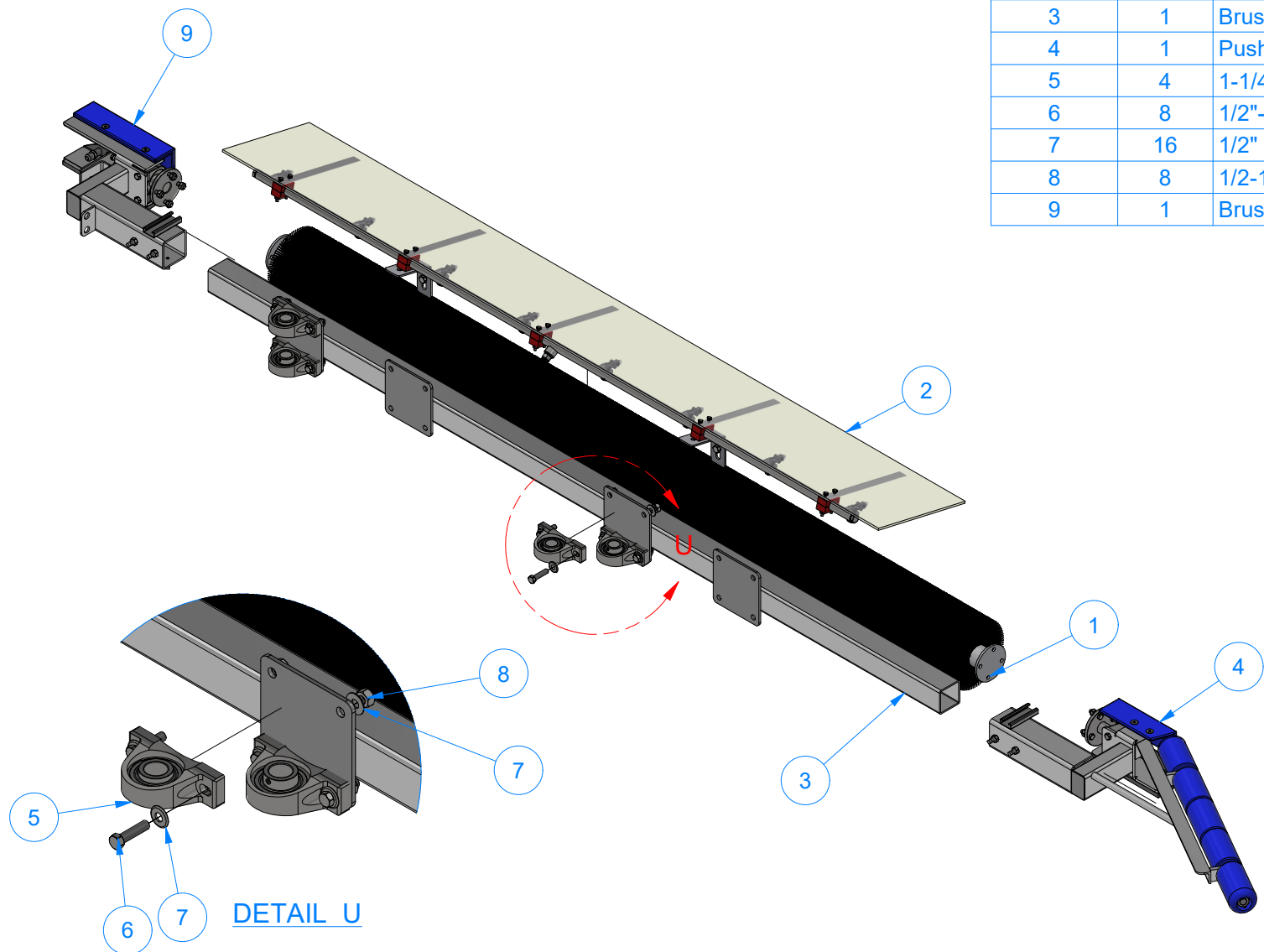
DIMENSION ARE IN INCHES & PROVIDED PRIOR TO SURFACE TREATMENTS, UNLESS NOTED.

SIZE
A


EST WEIGHT:

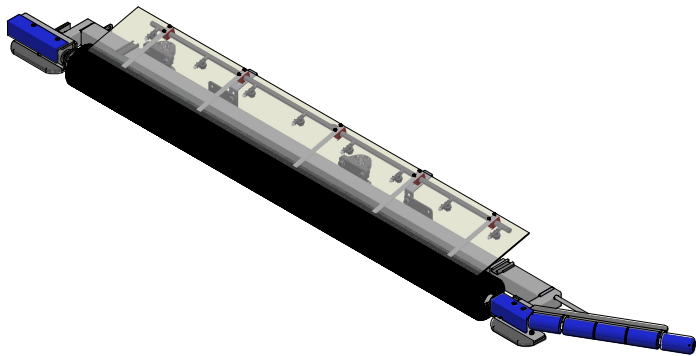
SHEET 5 of 42

PATH: L:\Libraries\Productivity\Tire Washer\Tire Shine Assemblies\TB4AA - Tire Brush Assembly [Driver][Hydraulic].iam

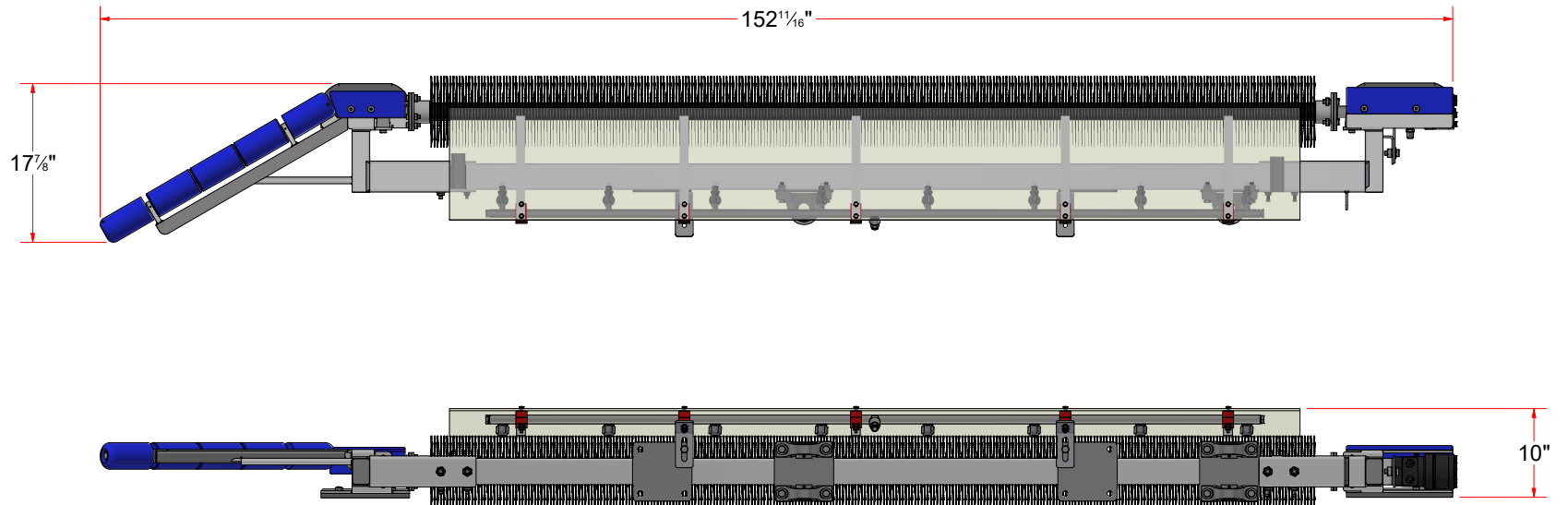


Parts List		
ITEM	QTY	DESCRIPTION
1	1	Tire Shine, Brush Set Assembly
2	1	Manifold Assembly, with Cover
3	1	Brush Support Frame
4	1	Push Bar Assembly [Driver]
5	4	1-1/4" Pillow Block
6	8	1/2"-13 x 2" L Hex Screw
7	16	1/2" Flat Washer
8	8	1/2-13 Hex Nut
9	1	Brush Drive Assembly [Driver - Hyd]

 <div>AVW EQUIPMENT CO., INC. 105 S. 9TH AVENUE MAYWOOD, IL 60153 Tel: 708-343-7738 Fax: 708-343-9065 WWW.AVWEQUIPMENT.COM</div>	DRAWN BY	Ljubomir	CUSTOMER: Tommy's Car Wash		
	CHECKED BY		PROJECT: Tommy's CW Tire Shine		
	QTY		DESCRIPTION: Tire Brush Assembly [Driver]		
<div>- COMPANY PROPRIETARY NOTE - THIS DRAWING AND ITS DESIGNS ARE PROPERTY OF AVW EQUIPMENT CO. & IT IS NOT TO BE USED OR REPRODUCED WITHOUT THE PERMISSION FROM AVW CO.</div>	RELEASE DATE	7/13/2021	PART NUMBER: TB4AA		REV#
	DIMENSION ARE IN INCHES & PROVIDED PRIOR TO SURFACE TREATMENTS, UNLESS NOTED.		SIZE A	EST WEIGHT:	SHEET 6 of 42
	PATH:L:\Libraries\Productivity\Tire Washer\Tire Shine Assemblies\TB4AA - Tire Brush Assembly [Driver][Hydraulic].iam				



TB4BA - Tire Brush Assembly [Passenger]



AVW EQUIPMENT CO., INC.
105 S. 9TH AVENUE
MAYWOOD, IL 60153
Tel: 708-343-7738 Fax: 708-343-9065
WWW.AVWEQUIPMENT.COM

- COMPANY PROPRIETARY NOTE -

THIS DRAWING AND ITS DESIGNS ARE PROPERTY OF AVW EQUIPMENT CO. & IT IS NOT TO BE USED OR REPRODUCED WITHOUT THE PERMISSION FROM AVW CO.

DRAWN BY

Ljubomir

CUSTOMER: Tommy's Car Wash

CHECKED BY

PROJECT: Tommy's CW Tire Shine

QTY

DESCRIPTION: Tire Brush Assembly [Passenger]

RELEASE DATE

7/13/2021

PART NUMBER: TB4BA

REV#

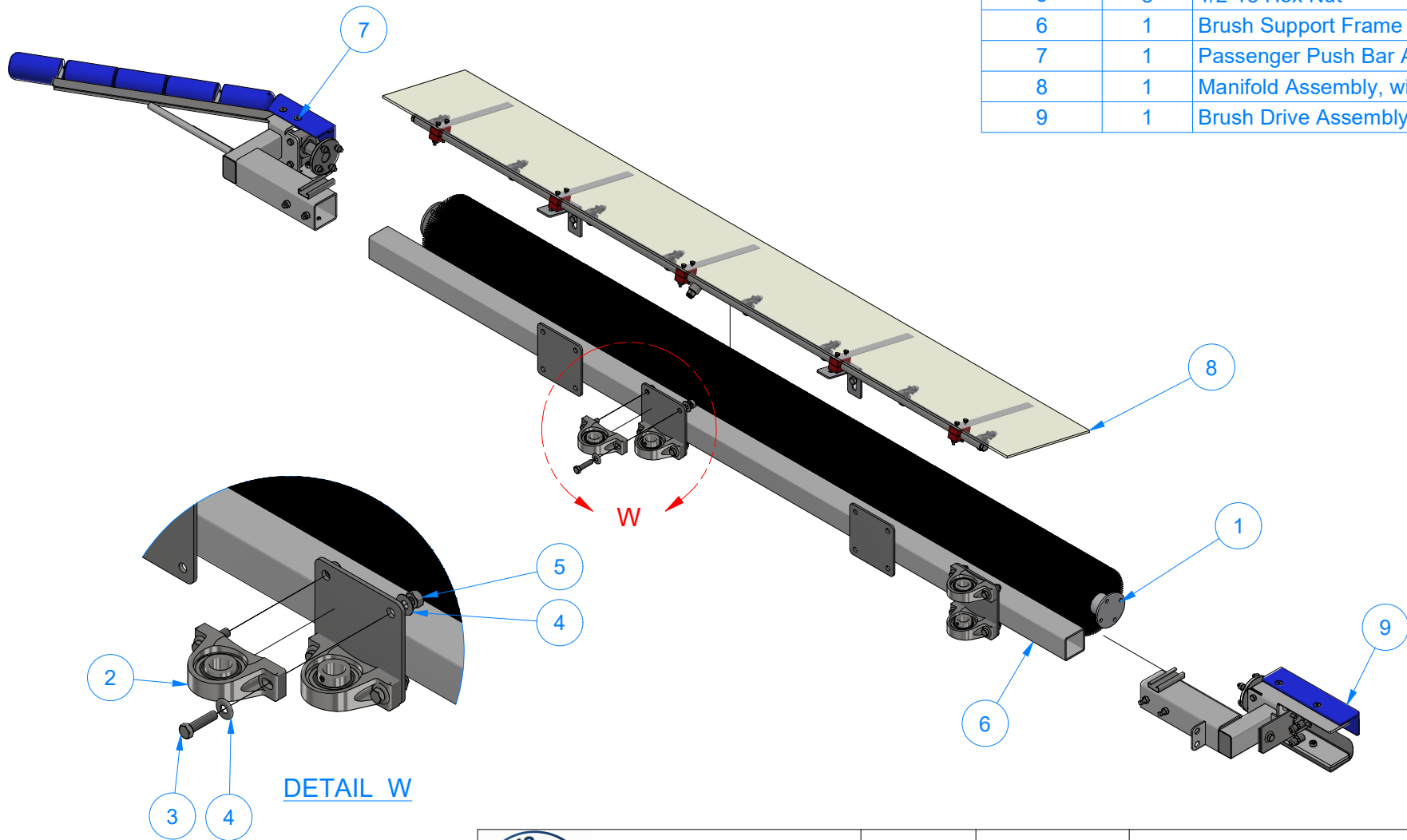
DIMENSION ARE IN INCHES & PROVIDED PRIOR TO SURFACE TREATMENTS, UNLESS NOTED.

SIZE
A

EST WEIGHT:

SHEET 7 of 42

PATH: L:\Libraries\Productivity\Tire Washer\Tire Shine Assemblies\TB4BA - Tire Brush Assembly [Passenger][Hydraulic].iam



Parts List		
ITEM	QTY	DESCRIPTION
1	1	Tire Shine, Brush Set Assembly
2	4	1-1/4" Pillow Block
3	8	1/2"-13 x 2" L Hex Screw
4	16	1/2" Flat Washer
5	8	1/2-13 Hex Nut
6	1	Brush Support Frame
7	1	Passenger Push Bar Assembly
8	1	Manifold Assembly, with Cover
9	1	Brush Drive Assembly [Passenger - H]



AVW EQUIPMENT CO., INC.
105 S. 9TH AVENUE
MAYWOOD, IL 60153
Tel: 708-343-7738 Fax: 708-343-9065
WWW.AVWEQUIPMENT.COM

- COMPANY PROPRIETARY NOTE -

THIS DRAWING AND ITS DESIGNS ARE PROPERTY OF AVW EQUIPMENT CO. & IT IS NOT TO BE USED OR REPRODUCED WITHOUT THE PERMISSION FROM AVW CO.

DRAWN BY

Ljubomir

CUSTOMER: Tommy's Car Wash

CHECKED BY

PROJECT: Tommy's CW Tire Shine

QTY

DESCRIPTION: Tire Brush Assembly [Passenger]

RELEASE DATE

7/13/2021

PART NUMBER: TB4BA

REV#

DIMENSION ARE IN INCHES & PROVIDED PRIOR TO SURFACE TREATMENTS, UNLESS NOTED.

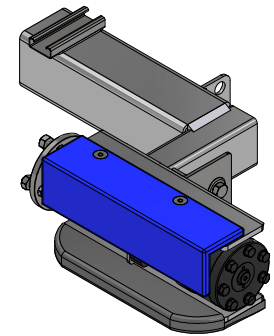
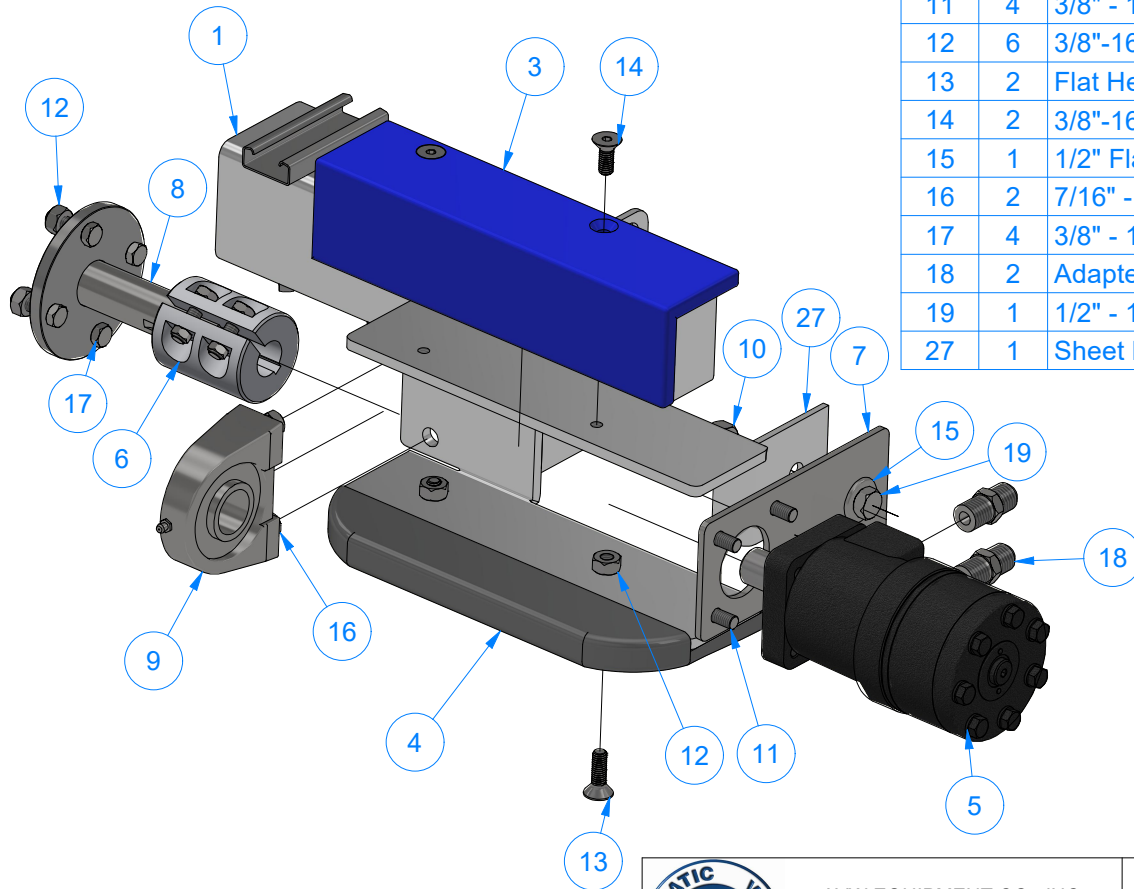
SIZE A

EST WEIGHT:

SHEET 8 of 42

PATH: L:\Libraries\Productivity\Tire Washer\Tire Shine Assemblies\TB4BA - Tire Brush Assembly [Passenger][Hydraulic].iam

TB3AAB - Brush Drive Assembly [Driver - Hyd]



Parts List			
ITEM	QTY	DESCRIPTION	PART NUMBER
1	1	Base Frame for Brush Drive Assembly [Driver - Hyd.]	TB3AABA
3	1	Rear Exit Cover [Driver]	TB3AABB
4	1	Rear Bumper 12" LG. [Driver]	TB3AABC
5	1	Parker, Hydraulic Motor	WA1KM-BMRS200
6	1	Aluminium Coupling 1 x 1.25 x 3 LG	TB2ADBC
7	1	Torque Plate #3/16" x 3 1/2" x 7 1/2" LG.	TB3AABF
8	1	4-1/2" Stub Shaft	TB2ADBA
9	1	Tapped Base Bearing 1-1/4"	BRG-RB1WB-TB1WC-SS
10	1	1/2-13 Hex Nut	HN1213
11	4	3/8" - 16 x 3/4" Hex Screw	HHCS3816075
12	6	3/8"-16 18-8ss Heavy Hex Nut	HHN3816
13	2	Flat Head Screw 3/8"-16 x 1-1/4"	FHSCS3816125F
14	2	3/8"-16 UNC x 1" LG. Flat Head Cap Screw	FHSCS3816100F
15	1	1/2" Flat Washer	FW12
16	2	7/16" - 14 x 1.13" UNC Hex Screw	HS010
17	4	3/8" - 16 x 1 1/4" UNC Hex Screw	HHCS3816125
18	2	Adapter for 1/2" Tube OD x 1/2" NPT Male Pipe	UNNBLKHDSS050JIC
19	1	1/2" - 13 x 1.25" UNC Hex Screw	HHCS1213125
27	1	Sheet Metal #7 Ga. x 3" x 4" LG.	TB3AABD



AVW EQUIPMENT CO., INC.
105 S. 9TH AVENUE
MAYWOOD, IL 60153
Tel: 708-343-7738 Fax: 708-343-9065
WWW.AVWEQUIPMENT.COM

- COMPANY PROPRIETARY NOTE -

THIS DRAWING AND ITS DESIGNS ARE PROPERTY OF AVW EQUIPMENT CO. & IT IS NOT TO BE USED OR REPRODUCED WITHOUT THE PERMISSION FROM AVW CO.

DRAWN BY

Ljubomir

CUSTOMER: Tommy's Car Wash

CHECKED BY

PROJECT: Tommy's CW Tire Shine

QTY

DESCRIPTION: Brush Drive Assembly [Driver - Hyd]

RELEASE DATE

7/13/2021

PART NUMBER: TB3AAB

REV#

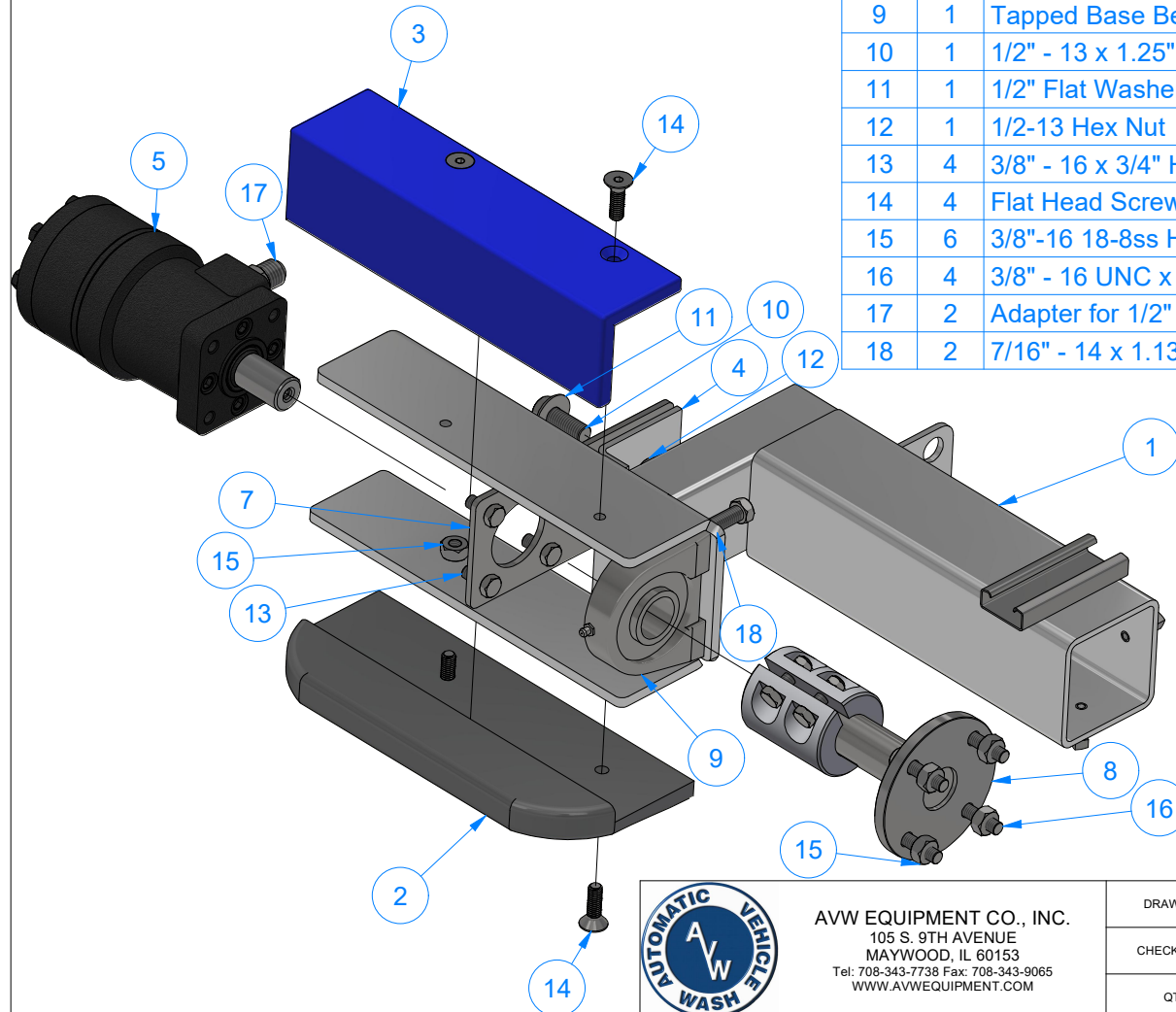
DIMENSION ARE IN INCHES & PROVIDED PRIOR TO SURFACE TREATMENTS, UNLESS NOTED.

SIZE
A

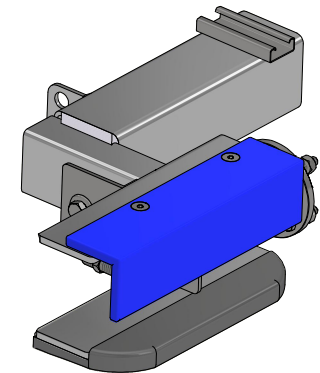
EST WEIGHT:

SHEET 9 of 42

TB3BAB - Brush Drive Assembly [Passenger - H]



Parts List				
ITEM	QTY	DESCRIPTION	PART NUMBER	
1	1	Base Frame for Brush Drive Assembly [Passenger - Hyd.]	TB3BABA	
2	1	Rear Bumper 12" LG. [Passenger]	TB3BABC	
3	1	Rear Exit Cover [Passenger]	TB3BABB	
4	1	Sheet Metal #7 Ga. x 3" x 4" LG.	TB3AABD	
5	1	Parker, Hydraulic Motor	WA1KM-BMRS200	
6	1	Aluminium Coupling 1 x 1.25 x 3 LG	TB2ADBC	
7	1	Torque Plate #3/16" x 3 1/2" x 7 1/2" LG.	TB3AABF	
8	1	4-1/2" Stub Shaft	TB2ADBA	
9	1	Tapped Base Bearing 1-1/4"	BRG-RB1WB-TB1WC-SS	
10	1	1/2" - 13 x 1.25" UNC Hex Screw	HHCS1213125	
11	1	1/2" Flat Washer	FW12	
12	1	1/2-13 Hex Nut	HN1213	
13	4	3/8" - 16 x 3/4" Hex Screw	HHCS3816075	
14	4	Flat Head Screw 3/8"-16 x 1-1/4"	FHSCS3816125F	
15	6	3/8"-16 18-8ss Heavy Hex Nut	HHN3816	
16	4	3/8" - 16 UNC x 1 1/2" Hex Screw	HHCS3816150	
17	2	Adapter for 1/2" Tube OD x 1/2" NPT Male Pipe	UNNBLKHDSS050JIC	
18	2	7/16" - 14 x 1.13" UNC Hex Screw	HS010	



AVW EQUIPMENT CO., INC.
105 S. 9TH AVENUE
MAYWOOD, IL 60153
Tel: 708-343-7738 Fax: 708-343-9065
WWW.AVWEQUIPMENT.COM

- COMPANY PROPRIETARY NOTE -

THIS DRAWING AND ITS DESIGNS ARE PROPERTY OF AVW EQUIPMENT CO. & IT IS NOT TO BE USED OR REPRODUCED WITHOUT THE PERMISSION FROM AVW CO.

DRAWN BY

Ljubomir

CUSTOMER: Tommy's Car Wash

CHECKED BY

PROJECT: Tommy's CW Tire Shine

QTY

DESCRIPTION: Brush Drive Assembly [Passenger - H]

RELEASE DATE

7/13/2021

PART NUMBER: TB3BAB

REV#

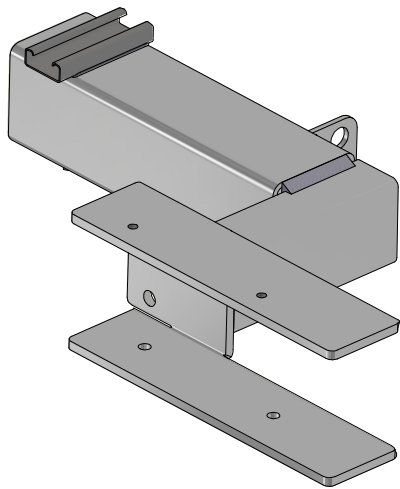
DIMENSION ARE IN INCHES & PROVIDED PRIOR TO SURFACE TREATMENTS, UNLESS NOTED.

SIZE
A

EST WEIGHT:

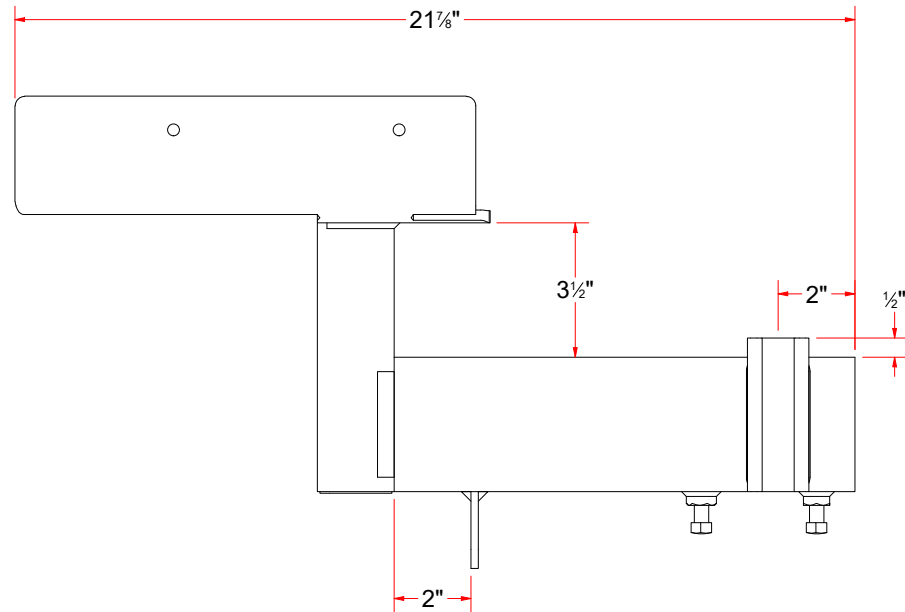
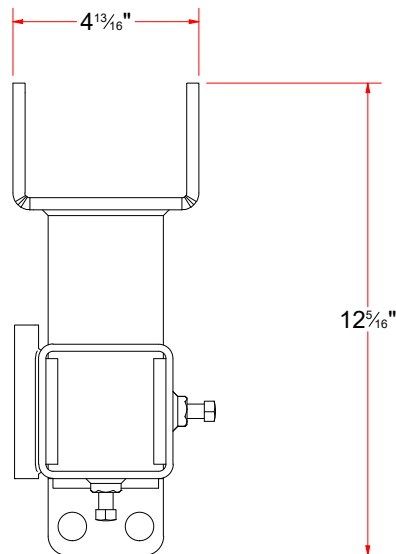
SHEET 10 of 42

PATH:L:\Libraries\Productivity\Tire Washer\Brush Drive Assembly\Hydraulic\TB3BAB - Passenger Side Brush Drive Assembly [Hyd].iam



Parts List			
ITEM	QTY	DESCRIPTION	PART NUMBER
9	4	Square Bolt - 3/8"-16 x 3/4" L	SB3816075
15	1	Sheet Metal [18 Ga.] 1 7/8" x 2 7/8"	PLSS18GX0188X0288X0H
19	1	Plate #3/16" x 2" x 3" LG.	TB3AABAB
20	1	Plate for the Base Frame [Hydraulic][Driver]	TB3AABAA
21	1	Sq. Tub. Assem. 3-1/2" x 12"	TB3AAAAA
22	1	Unistrut 1/2" x 1-1/2" x 4"	UN050150400
23	1	Rct.Tubing [7 Ga.] 2" x 3" x 7" LG.	RCTSS07GX200X300X00700

TB3AABA - Base Frame for Brush Drive Assembly [Driver - Hyd.]



AVW EQUIPMENT CO., INC.
105 S. 9TH AVENUE
MAYWOOD, IL 60153
Tel: 708-343-7738 Fax: 708-343-9065
WWW.AVWEQUIPMENT.COM

- COMPANY PROPRIETARY NOTE -

THIS DRAWING AND ITS DESIGNS ARE PROPERTY OF AVW EQUIPMENT CO. & IT IS NOT TO BE USED OR REPRODUCED WITHOUT THE PERMISSION FROM AVW CO.

DRAWN BY

Ljubomir

CUSTOMER: Tommy's Car Wash

CHECKED BY

PROJECT: Tommy's CW Tire Shine

QTY

DESCRIPTION: Base Frame for Brush Drive Assembly [Driver - Hyd.]

RELEASE DATE

7/13/2021

PART NUMBER: TB3AABA

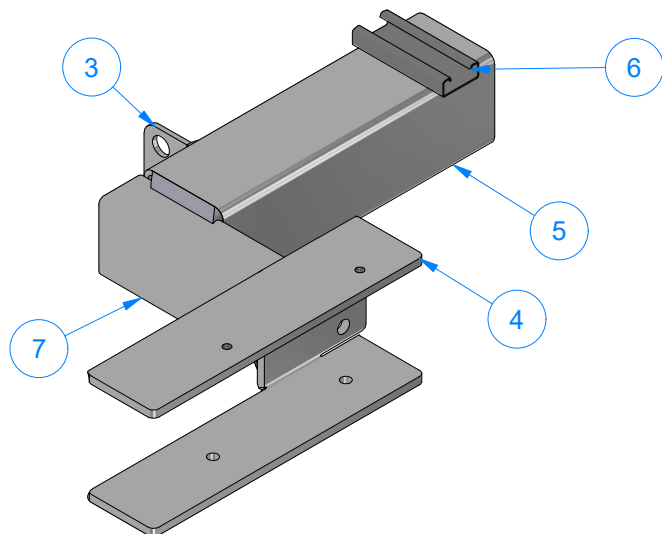
REV#

DIMENSION ARE IN INCHES & PROVIDED PRIOR TO SURFACE TREATMENTS, UNLESS NOTED.

SIZE A

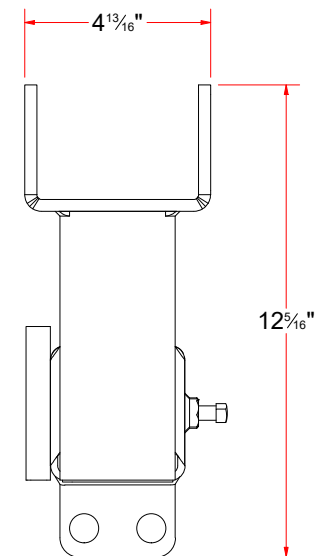
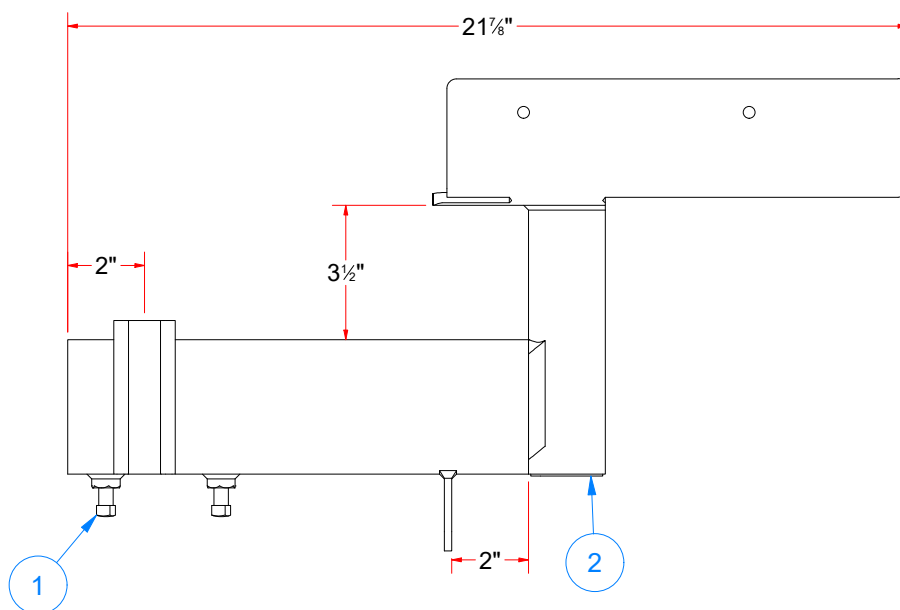
EST WEIGHT:

SHEET 11 of 42



Parts List			
ITEM	QTY	DESCRIPTION	PART NUMBER
1	4	Square Bolt - 3/8"-16 x 3/4" L	SB3816075
2	1	Sheet Metal [18 Ga.] 1 7/8" x 2 7/8"	PLSS18GX0188X0288X0H
3	1	Plate #3/16" x 2" x 3" LG.	TB3AABAB
4	1	Plate for the Base Frame [Hydraulic][Passenger]	TB3BABAA
5	1	Sq. Tub. Assem. 3-1/2" x 12"	TB3AAAAA
6	1	Unistrut 1/2" x 1-1/2" x 4"	UN050150400
7	1	Rct.Tubing [7 Ga.] 2" x 3" x 7" LG.	RCTSS07GX200X300X00700

TB3BABA - Base Frame for Brush Drive Assembly [Passenger - Hyd.]



AVW EQUIPMENT CO., INC.
105 S. 9TH AVENUE
MAYWOOD, IL 60153
Tel: 708-343-7738 Fax: 708-343-9065
WWW.AVWEQUIPMENT.COM

- COMPANY PROPRIETARY NOTE -

THIS DRAWING AND ITS DESIGNS ARE PROPERTY OF AVW EQUIPMENT CO. & IT IS NOT TO BE USED OR REPRODUCED WITHOUT THE PERMISSION FROM AVW CO.

DRAWN BY

Ljubomir

CUSTOMER: Tommy's Car Wash

CHECKED BY

PROJECT: Tommy's CW Tire Shine

QTY

DESCRIPTION: Base Frame for Brush Drive Assembly [Passenger - Hyd.]

RELEASE DATE

7/13/2021

PART NUMBER: TB3BABA

REV#

DIMENSION ARE IN INCHES & PROVIDED PRIOR TO SURFACE TREATMENTS, UNLESS NOTED.

SIZE A

EST WEIGHT:

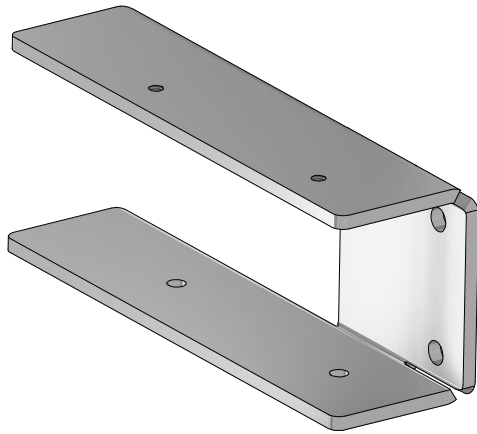
SHEET 12 of 42

PATH:L:\Libraries\Productivity\Tire Washer\Brush Drive Assembly\Hydraulic\Parts\TB3BABA - Base Frame for Brush Drive Assembly [Passenger - Hyd.].iam

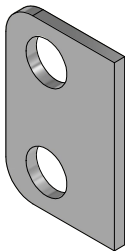


SHEET 13 of 42

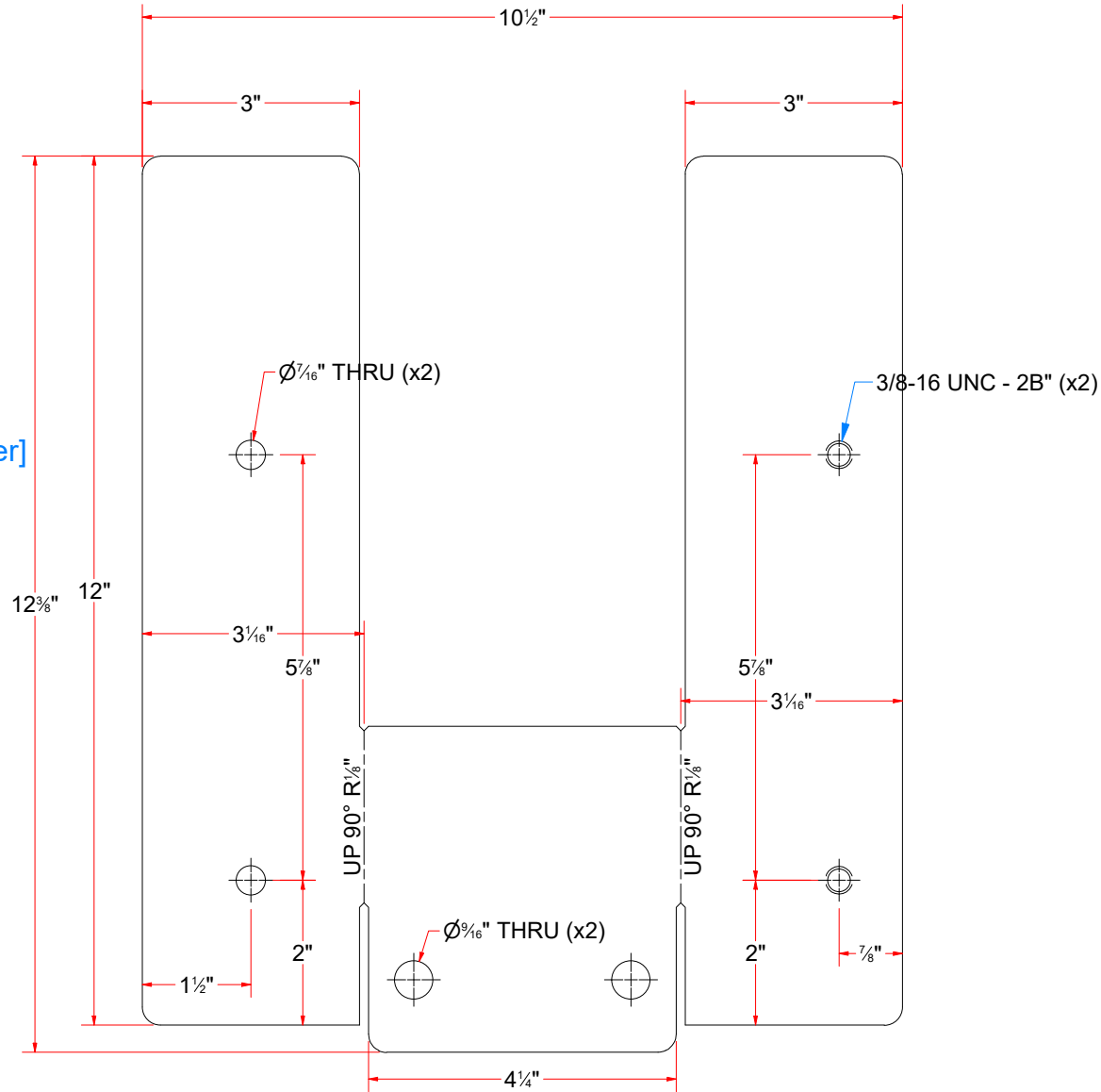
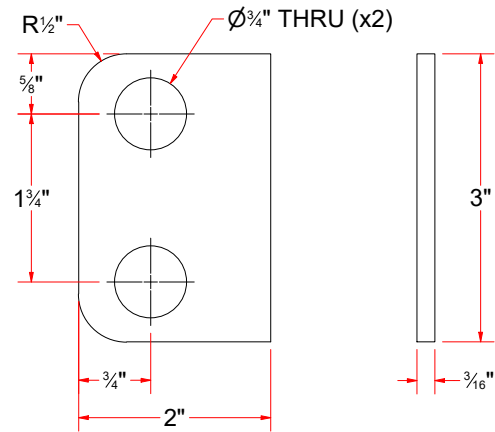
PATH:L:\Libraries\Productivity\Tire Washer\Brush Drive Assembly\Hydraulic\Parts\TB3AABAA - Plate for the Base Frame [Hydraulic].ipt




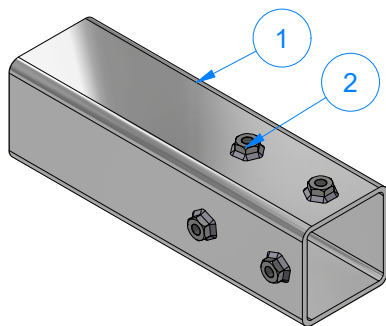
TB3BABAA - Plate for the Base Frame [Hydraulic][Passenger]



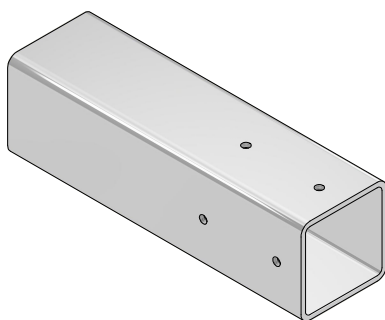
TB3AABAB - Plate #3/16" x 2" x 3" LG.



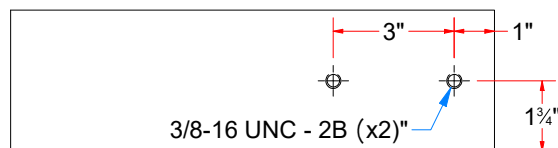
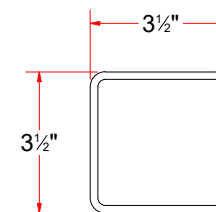
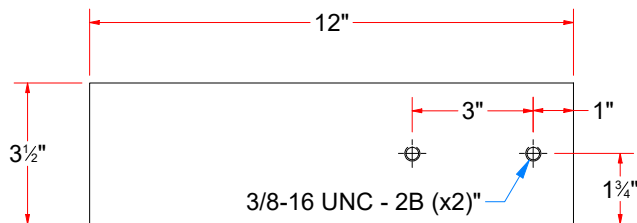
	AVW EQUIPMENT CO., INC. 105 S. 9TH AVENUE MAYWOOD, IL 60153 Tel: 708-343-7738 Fax: 708-343-9065 WWW.AVWEQUIPMENT.COM	DRAWN BY	Ljubomir	CUSTOMER: Tommy's Car Wash		
		CHECKED BY		PROJECT: Tommy's CW Tire Shine		
		QTY		DESCRIPTION: Plate for the Base Frame [Hydraulic][Passenger]		
- COMPANY PROPRIETARY NOTE - THIS DRAWING AND ITS DESIGNS ARE PROPERTY OF AVW EQUIPMENT CO. & IT IS NOT TO BE USED OR REPRODUCED WITHOUT THE PERMISSION FROM AVW CO.		RELEASE DATE	7/13/2021	PART NUMBER: TB3BABAA		REV#
		DIMENSION ARE IN INCHES & PROVIDED PRIOR TO SURFACE TREATMENTS, UNLESS NOTED.		SIZE A	EST WEIGHT:	SHEET 14 of 42
		PATH: L:\Libraries\Productivity\Tire Washer\Brush Drive Assembly\Hydraulic\Parts\TB3BABAA - Plate for the Base Frame [Hydraulic].ipt				



TB3AAAAA - Sq. Tub. Assem. 3-1/2" x 12"



TB3AAAAAA - Sq. Tubing 3 1/2" x 3/16" x 12" LG.



Parts List			
ITEM	QTY	DESCRIPTION	PART NUMBER
1	1	Sq. Tubing 3 1/2" x 3/16" x 12" LG.	TB3AAAAAA
2	4	3/8"-16 18-8ss Heavy Hex Nut	HHN3816



AVW EQUIPMENT CO., INC.
105 S. 9TH AVENUE
MAYWOOD, IL 60153
Tel: 708-343-7738 Fax: 708-343-9065
WWW.AVWEQUIPMENT.COM

- COMPANY PROPRIETARY NOTE -

THIS DRAWING AND ITS DESIGNS ARE PROPERTY OF AVW EQUIPMENT CO. & IT IS NOT TO BE USED OR REPRODUCED WITHOUT THE PERMISSION FROM AVW CO.

DRAWN BY

Ljubomir

CUSTOMER: Tommy's Car Wash

CHECKED BY

PROJECT: Tommy's CW Tire Shine

QTY

DESCRIPTION: Sq. Tub. Assem. 3-1/2" x 12"

RELEASE DATE

7/13/2021

PART NUMBER: TB3AAAAA

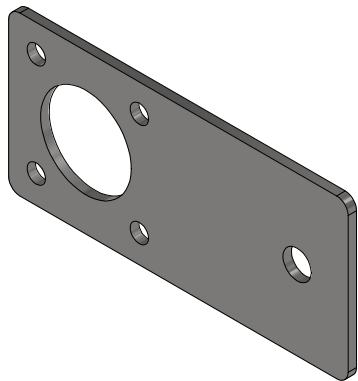
REV#

DIMENSION ARE IN INCHES & PROVIDED PRIOR TO SURFACE TREATMENTS, UNLESS NOTED.

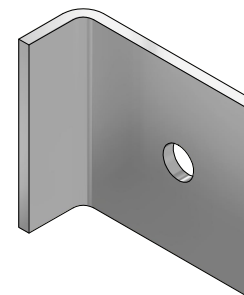
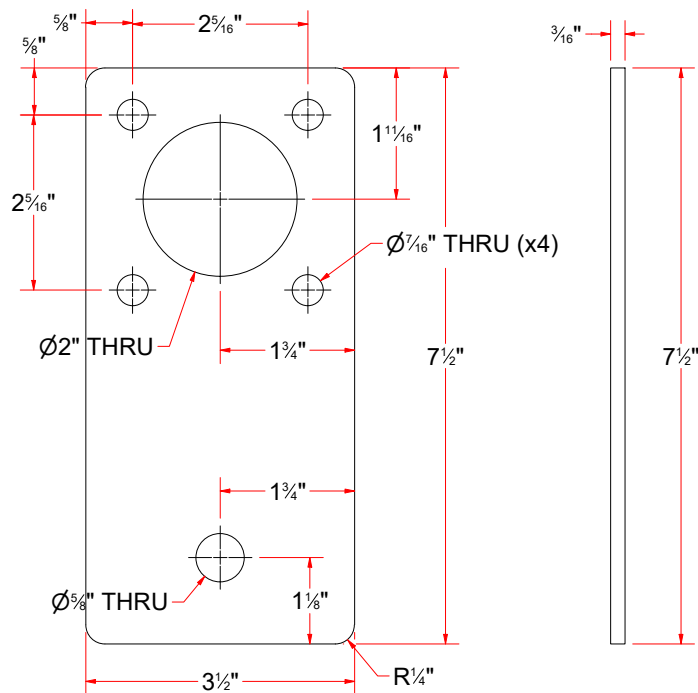
SIZE
A

EST WEIGHT:

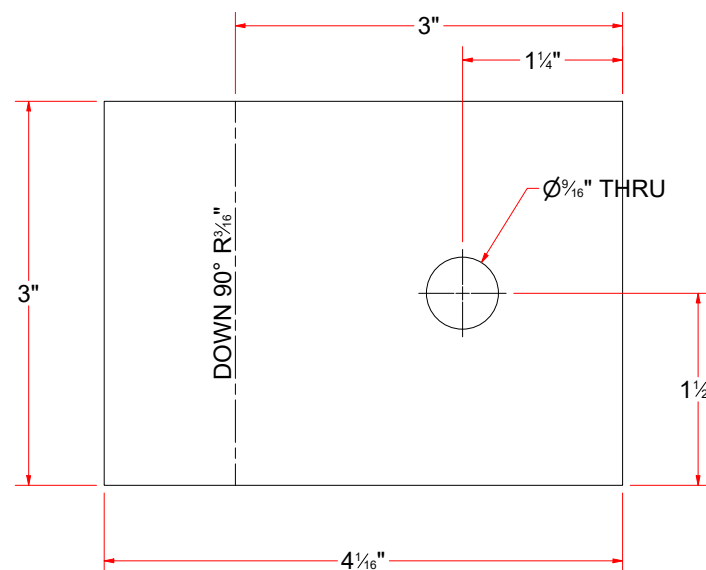
SHEET 15 of 42



TB3AABF - Torque Plate #3/16" x 3 1/2" x 7 1/2" LG.



TB3AABD - Sheet Metal #7 Ga. x 3" x 4" LG.



AVW EQUIPMENT CO., INC.
105 S. 9TH AVENUE
MAYWOOD, IL 60153
Tel: 708-343-7738 Fax: 708-343-9065
WWW.AVWEQUIPMENT.COM

- COMPANY PROPRIETARY NOTE -

THIS DRAWING AND ITS DESIGNS ARE PROPERTY OF AVW EQUIPMENT CO. & IT IS NOT TO BE USED OR REPRODUCED WITHOUT THE PERMISSION FROM AVW CO.

DRAWN BY

Ljubomir

CUSTOMER: Tommy's Car Wash

CHECKED BY

PROJECT: Tommy's CW Tire Shine

QTY

DESCRIPTION: Torque Plate #3/16" x 3 1/2" x 7 1/2" LG.

RELEASE DATE

7/13/2021

PART NUMBER: TB3AABE

REV#

DIMENSION ARE IN INCHES & PROVIDED PRIOR TO SURFACE TREATMENTS, UNLESS NOTED.

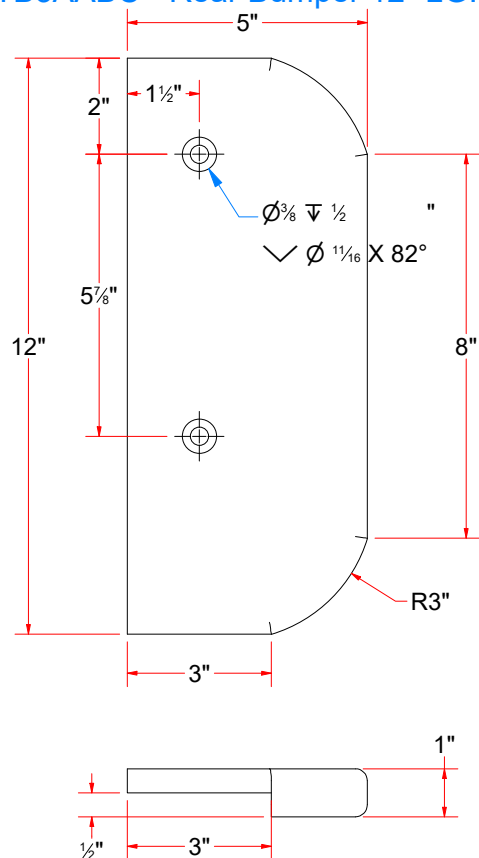
SIZE A

EST WEIGHT:

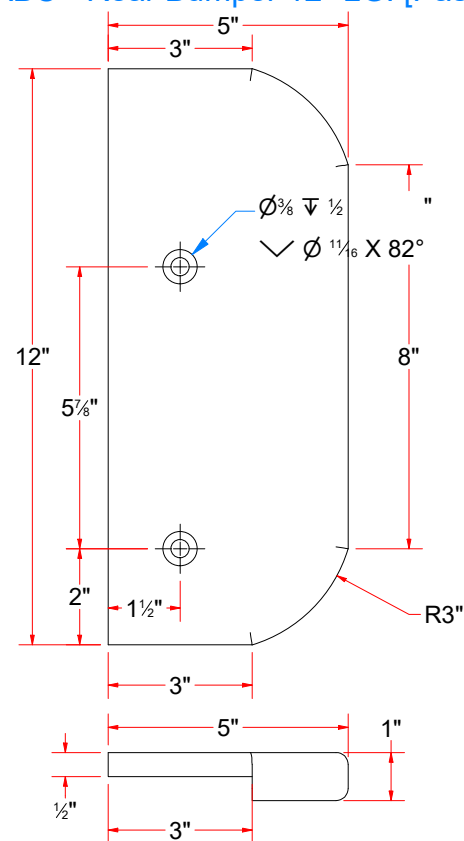
SHEET 16 of 42



TB3AABC - Rear Bumper 12" LG. [Driver]



TB3BABC - Rear Bumper 12" LG. [Passenger]



AVW EQUIPMENT CO., INC.
105 S. 9TH AVENUE
MAYWOOD, IL 60153
Tel: 708-343-7738 Fax: 708-343-9065
WWW.AVWEQUIPMENT.COM

- COMPANY PROPRIETARY NOTE -

THIS DRAWING AND ITS DESIGNS ARE PROPERTY OF AVW EQUIPMENT CO. & IT IS NOT TO BE USED OR REPRODUCED WITHOUT THE PERMISSION FROM AVW CO.

DRAWN BY

Ljubomir

CUSTOMER: Tommy's Car Wash

CHECKED BY

PROJECT: Tommy's CW Tire Shine

QTY

DESCRIPTION: Rear Bumper 12" LG. [Driver]

RELEASE DATE

7/13/2021

PART NUMBER: TB3AABC

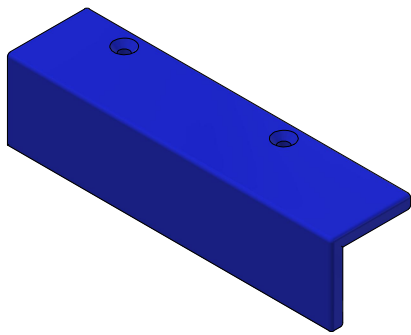
REV#

DIMENSION ARE IN INCHES & PROVIDED PRIOR TO SURFACE TREATMENTS, UNLESS NOTED.

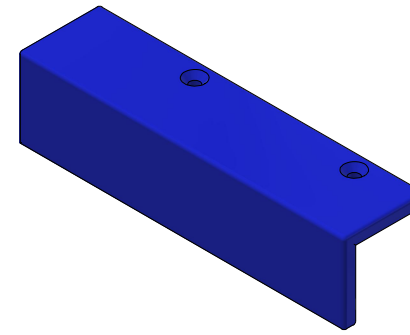
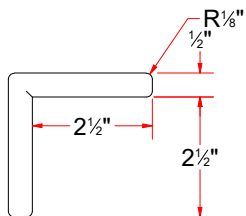
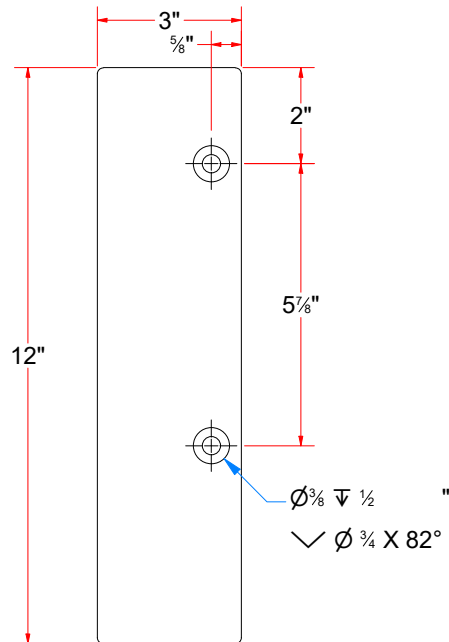
SIZE A

EST WEIGHT:

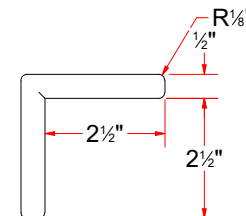
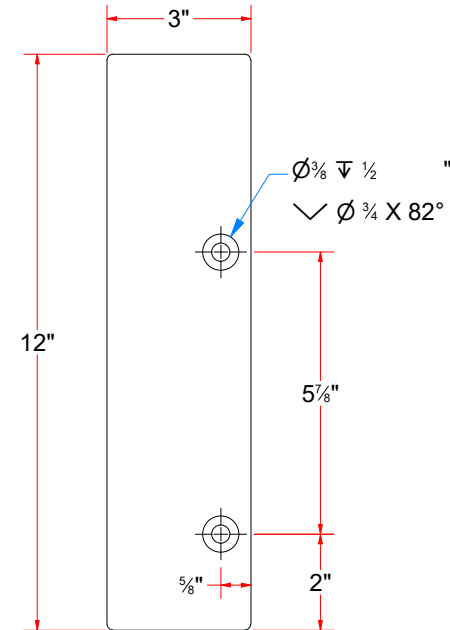
SHEET 17 of 42



TB3AABB - Rear Exit Cover [Driver]



TB3BABB - Rear Exit Cover [Passenger]



AVW EQUIPMENT CO., INC.
105 S. 9TH AVENUE
MAYWOOD, IL 60153
Tel: 708-343-7738 Fax: 708-343-9065
WWW.AVWEQUIPMENT.COM

- COMPANY PROPRIETARY NOTE -

THIS DRAWING AND ITS DESIGNS ARE PROPERTY OF AVW EQUIPMENT CO. & IT IS NOT TO BE USED OR REPRODUCED WITHOUT THE PERMISSION FROM AVW CO.

DRAWN BY

Ljubomir

CUSTOMER: Tommy's Car Wash

CHECKED BY

PROJECT: Tommy's CW Tire Shine

QTY

DESCRIPTION: Rear Exit Cover [Driver]

RELEASE DATE

7/13/2021

PART NUMBER: TB3AABB

REV#

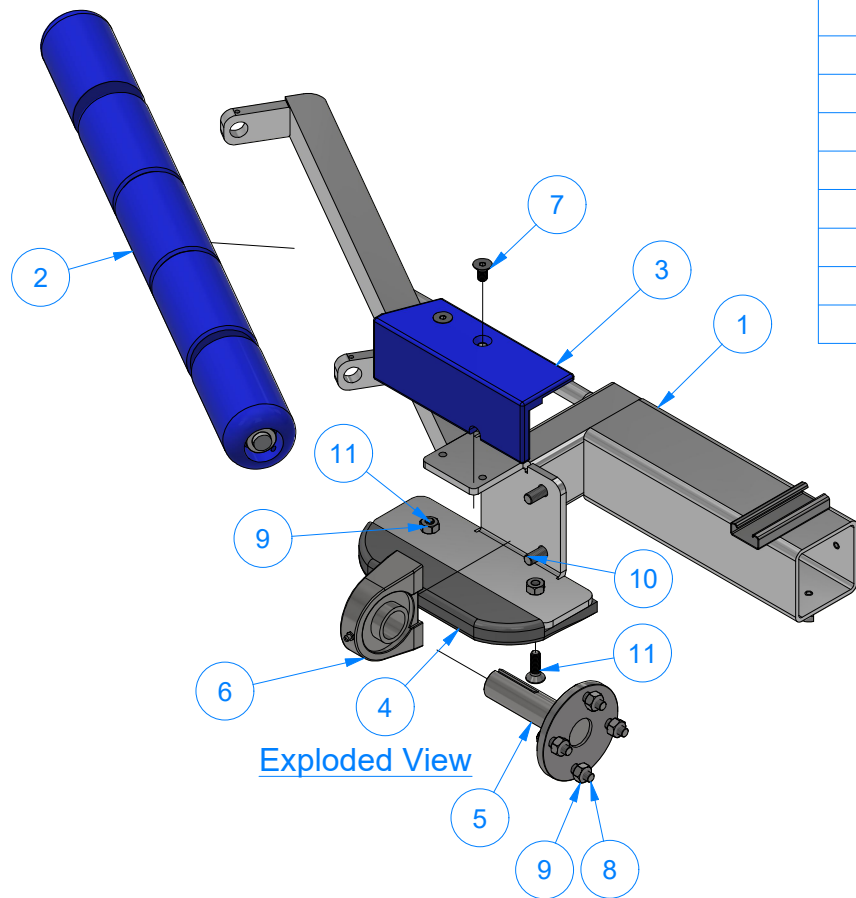
DIMENSION ARE IN INCHES & PROVIDED PRIOR TO SURFACE TREATMENTS, UNLESS NOTED.

SIZE A

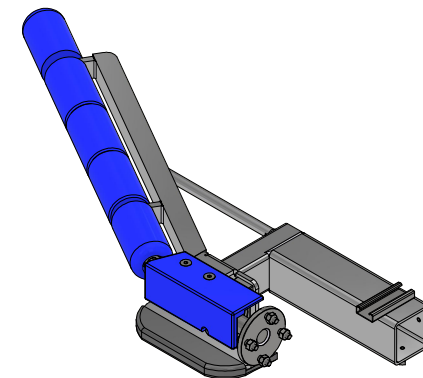
EST WEIGHT:

SHEET 18 of 42

PATH: L:\Libraries\Productivity\Tire Washer\Brush Drive Assembly\Hydraulic\Parts\TB3AABB - Hyd. Motor - Top Cover [Driver].ipt



Parts List			
ITEM	QTY	DESCRIPTION	PART NUMBER
1	1	Frame For Driver Push Bar Assembly	TB3AAAA
2	1	Roller Guide Set	TB3AAAD
3	1	Top Plastic Cover [Driver]	TB3AAAC
4	1	Bumper Plate 10"	TB3AABC-EL
5	1	4-1/2" Stub Shaft	TB3AAAE
6	1	Tapped Base Bearing 1-1/4"	BRG-RB1WB-TB1WC-SS
7	2	FLAT HEAD SCREW 3/8"-16x3/4"	FHSCS3816075F
8	4	3/8" - 16 x 1 1/4" UNC Hex Screw	HHCS3816125
9	6	3/8"-16 18-8ss Heavy Hex Nut	HHN3816
10	2	7/16" - 14 x 1.13" UNC Hex Screw	HS010
11	2	Flat Head Screw 3/8"-16 x 1-1/4"	FHSCS3816125F



**TB3AAA - Push Bar Assembly
[Driver]**



AVW EQUIPMENT CO., INC.
105 S. 9TH AVENUE
MAYWOOD, IL 60153
Tel: 708-343-7738 Fax: 708-343-9065
WWW.AVWEQUIPMENT.COM

- COMPANY PROPRIETARY NOTE -

THIS DRAWING AND ITS DESIGNS ARE PROPERTY OF AVW EQUIPMENT CO. &
IT IS NOT TO BE USED OR REPRODUCED WITHOUT THE PERMISSION FROM AVW CO.

DRAWN BY

Ljubomir

CUSTOMER: Tommy's Car Wash

CHECKED BY

PROJECT: Tommy's CW Tire Shine

QTY

DESCRIPTION: Push Bar Assembly [Driver]

RELEASE
DATE

7/13/2021

PART NUMBER: TB3AAA

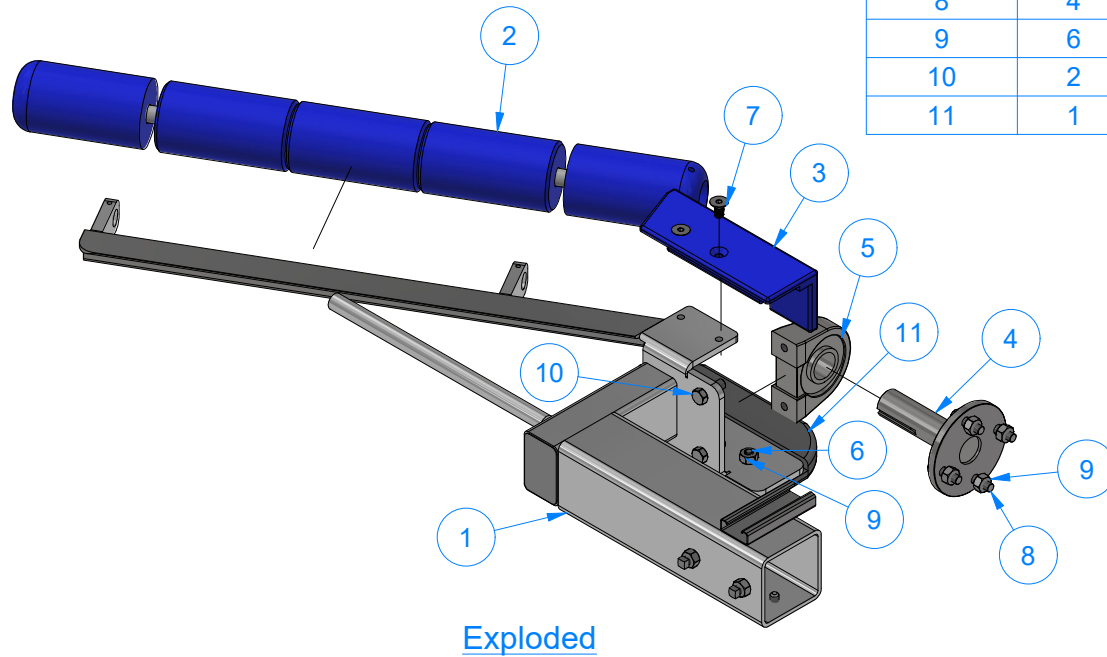
REV#

DIMENSION ARE IN INCHES & PROVIDED PRIOR
TO SURFACE TREATMENTS, UNLESS NOTED.

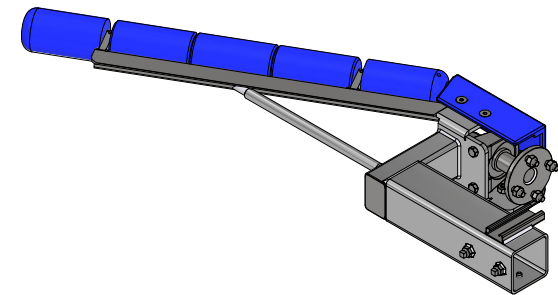
SIZE
A

EST WEIGHT:

SHEET 19 of 42



Parts List			
ITEM	QTY	DESCRIPTION	PART NUMBER
1	1	Frame For Passenger Push Bar Assembly	TB3BAAA
2	1	Roller Guide Set	TB3AAAD
3	1	Top Plastic Cover [Passenger]	TB3BAAC
4	1	4-1/2" Stub Shaft	TB3AAAE
5	1	Tapped Base Bearing 1-1/4"	BRG-RB1WB-TB1WC-SS
6	2	Flat Head Screw 3/8"-16 x 1-1/4"	FHSCS3816125F
7	2	FLAT HEAD SCREW 3/8"-16x3/4"	FHSCS3816075F
8	4	3/8" - 16 x 1 1/4" UNC Hex Screw	HHCS3816125
9	6	3/8"-16 18-8ss Heavy Hex Nut	HHN3816
10	2	7/16" - 14 x 1.13" UNC Hex Screw	HS010
11	1	Bumper Plate 10"	TB3AABC-EL



TB3BAA - Passenger Push Bar Assembly



AVW EQUIPMENT CO., INC.
105 S. 9TH AVENUE
MAYWOOD, IL 60153
Tel: 708-343-7738 Fax: 708-343-9065
WWW.AVWEQUIPMENT.COM

- COMPANY PROPRIETARY NOTE -

THIS DRAWING AND ITS DESIGNS ARE PROPERTY OF AVW EQUIPMENT CO. & IT IS NOT TO BE USED OR REPRODUCED WITHOUT THE PERMISSION FROM AVW CO.

DRAWN BY

Ljubomir

CUSTOMER: Tommy's Car Wash

CHECKED BY

PROJECT: Tommy's CW Tire Shine

QTY

DESCRIPTION: Passenger Push Bar Assembly

RELEASE DATE

7/13/2021

PART NUMBER: TB3BAA

REV#

DIMENSION ARE IN INCHES & PROVIDED PRIOR TO SURFACE TREATMENTS, UNLESS NOTED.

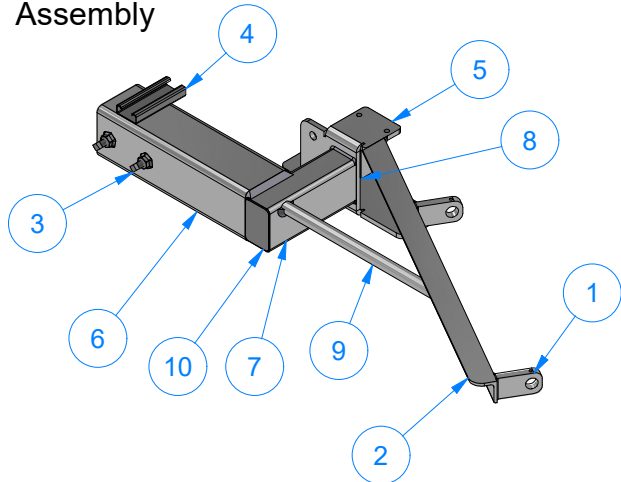
SIZE
A

EST WEIGHT:

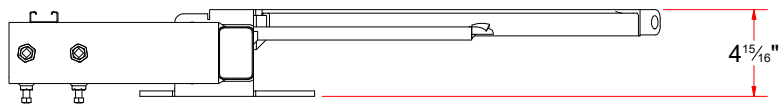
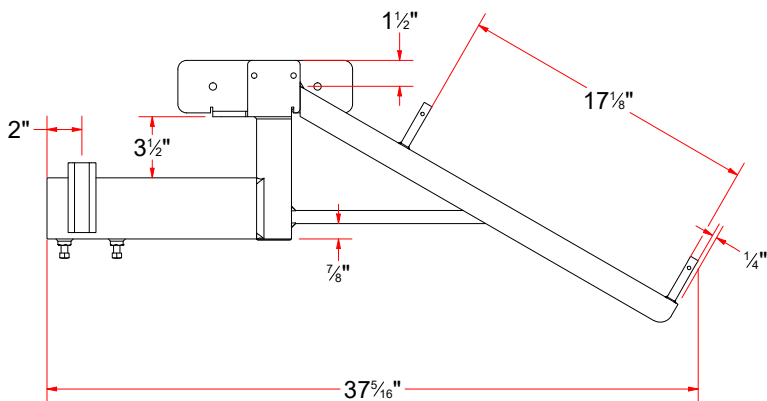
SHEET 20 of 42


PATH: L:\Libraries\Productivity\Tire Washer\Push Bar Assembly\TB3BAA - Passenger Push Bar Assembly.iam

TB3AAAA - Frame For Driver Push Bar
Assembly

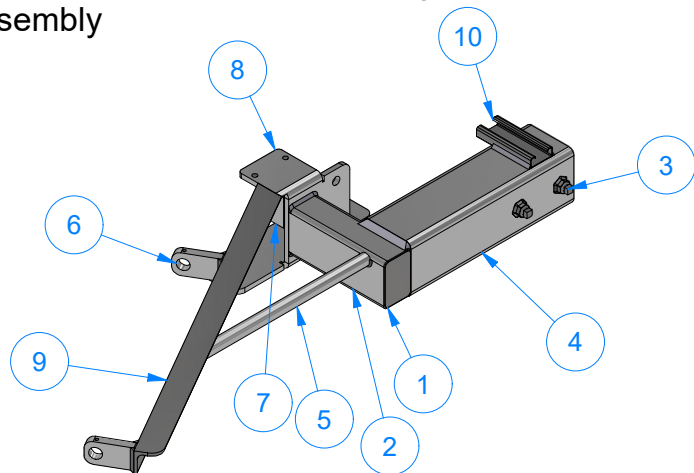


Parts List		
ITEM	QTY	DESCRIPTION
1	2	Support Bracket for Roller Guide Shaft
2	1	Angle #3/16" x 1 1/2" x 1 1/2" x 14" LG.
3	4	Square Bolt - 3/8"-16 x 3/4" L
4	1	Unistrut 1/2" x 1-1/2" x 4"
5	1	Bearing Support Plate [Driver]
6	1	Sq. Tub. Assem. 3-1/2" x 12"
7	1	Rct.Tubing [7 Ga.] 2" x 3" x 7" LG.
8	1	Support Plate #3/16 x 1 1/2" x 1 1/2"
9	1	Support Shaft 3/4" x 12-1/2"
10	1	Sheet Metal [18 Ga.] 1 7/8" x 2 7/8"

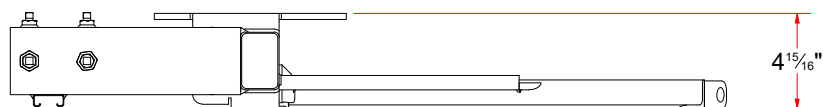


 AVW EQUIPMENT CO., INC. 105 S. 9TH AVENUE MAYWOOD, IL 60153 Tel: 708-343-7738 Fax: 708-343-9065 WWW.AVWEQUIPMENT.COM	DRAWN BY	Ljubomir	CUSTOMER: Tommy's Car Wash	
	CHECKED BY		PROJECT: Tommy's CW Tire Shine	
	QTY		DESCRIPTION: Frame For Driver Push Bar Assembly	
	RELEASE DATE	7/13/2021	PART NUMBER: TB3AAAA	REV#
- COMPANY PROPRIETARY NOTE - THIS DRAWING AND ITS DESIGNS ARE PROPERTY OF AVW EQUIPMENT CO. & IT IS NOT TO BE USED OR REPRODUCED WITHOUT THE PERMISSION FROM AVW CO.		DIMENSION ARE IN INCHES & PROVIDED PRIOR TO SURFACE TREATMENTS, UNLESS NOTED.		SIZE A
PATH: L:\Libraries\Productivity\Tire Washer\Push Bar Assembly\Parts\TB3AAAA - Frame For Driver Push Bar Assembly.iam		EST WEIGHT:		SHEET 21 of 42

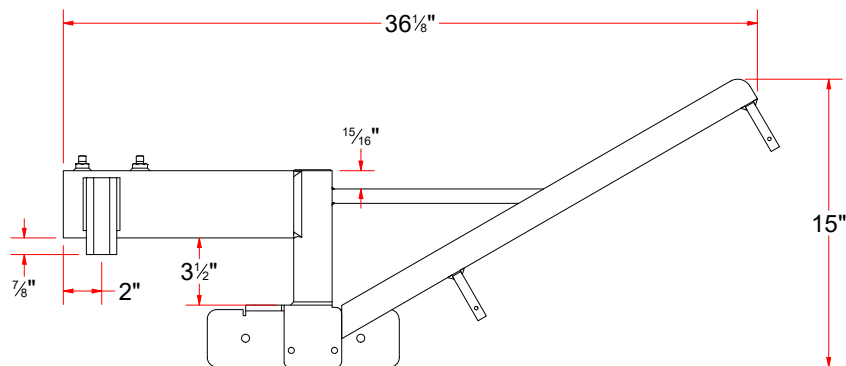
TB3BAAA - Frame For Passenger Push Bar Assembly



Parts List			
ITEM	QTY	DESCRIPTION	PART NUMBER
1	1	Sheet Metal [18 Ga.] 1 7/8" x 2 7/8"	PLSS18GX0188X0288X0H
2	1	Rct.Tubing [7 Ga.] 2" x 3" x 7" LG.	RCTSS07GX200X300X00700
3	4	Square Bolt - 3/8"-16 x 3/4" L	SB3816075
4	1	Sq. Tub. Assem. 3-1/2" x 12"	TB3AAAAA
5	1	Support Shaft 3/4" x 12-1/2"	TB3AAAAD
6	2	Support Bracket for Roller Guide Shaft	TB3AAAAE
7	1	Support Plate #3/16 x 1 1/2" x 1 1/2"	TB3AAAAF
8	1	Bearing Support Plate [Passenger]	TB3BAAAB
9	1	Angle #3/16" x 1-1/2" x 1-1/2" x 25 LG.	TB3BAAAC
10	1	Unistrut 1/2" x 1-1/2" x 4"	UN050150400



Back



Top



AVW EQUIPMENT CO., INC.
105 S. 9TH AVENUE
MAYWOOD, IL 60153
Tel: 708-343-7738 Fax: 708-343-9065
WWW.AVWEQUIPMENT.COM

- COMPANY PROPRIETARY NOTE -

THIS DRAWING AND ITS DESIGNS ARE PROPERTY OF AVW EQUIPMENT CO. & IT IS NOT TO BE USED OR REPRODUCED WITHOUT THE PERMISSION FROM AVW CO.

DRAWN BY

Ljubomir

CUSTOMER: Tommy's Car Wash

CHECKED BY

PROJECT: Tommy's CW Tire Shine

QTY

DESCRIPTION: Frame For Passenger Push Bar Assembly

RELEASE DATE

7/13/2021

PART NUMBER: TB3BAAA

REV#

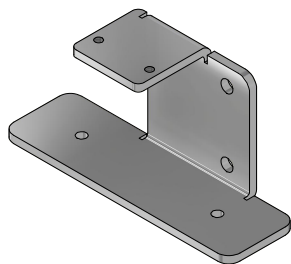
DIMENSION ARE IN INCHES & PROVIDED PRIOR TO SURFACE TREATMENTS, UNLESS NOTED.

SIZE
A

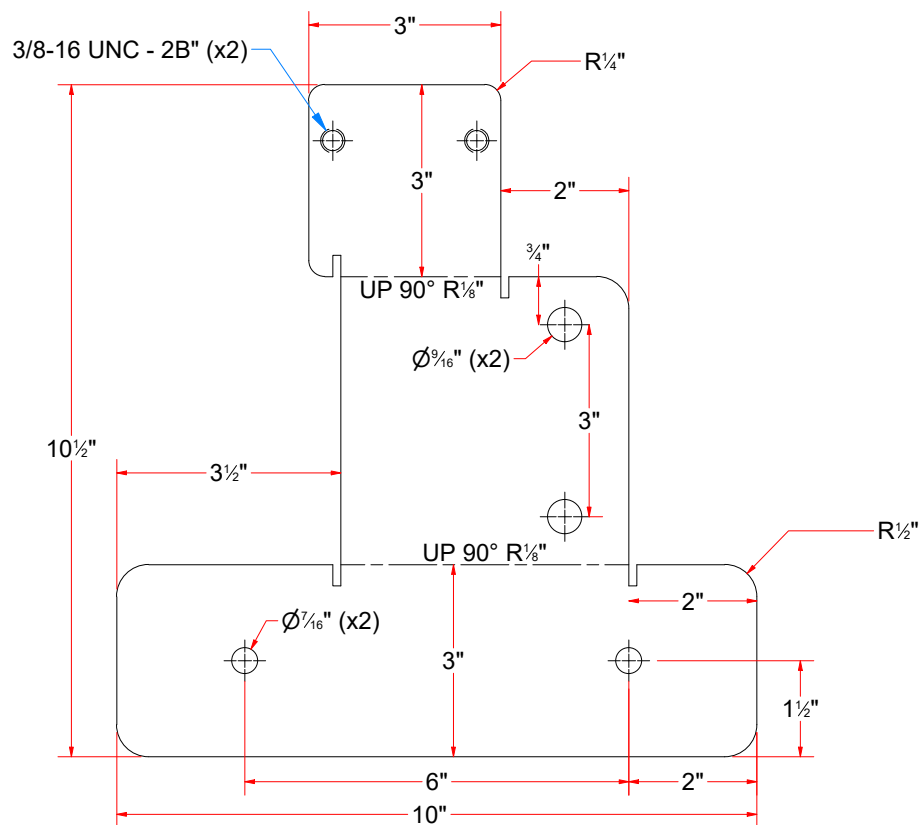
EST WEIGHT:

SHEET 22 of 42

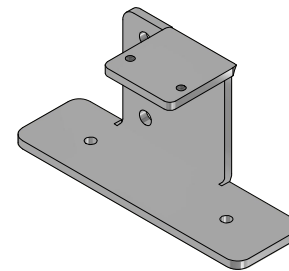
PATH: L:\Libraries\Productivity\Tire Washer\Push Bar Assembly\Parts\TB3BAAA - Frame For Passenger Push Bar Assembly.iam



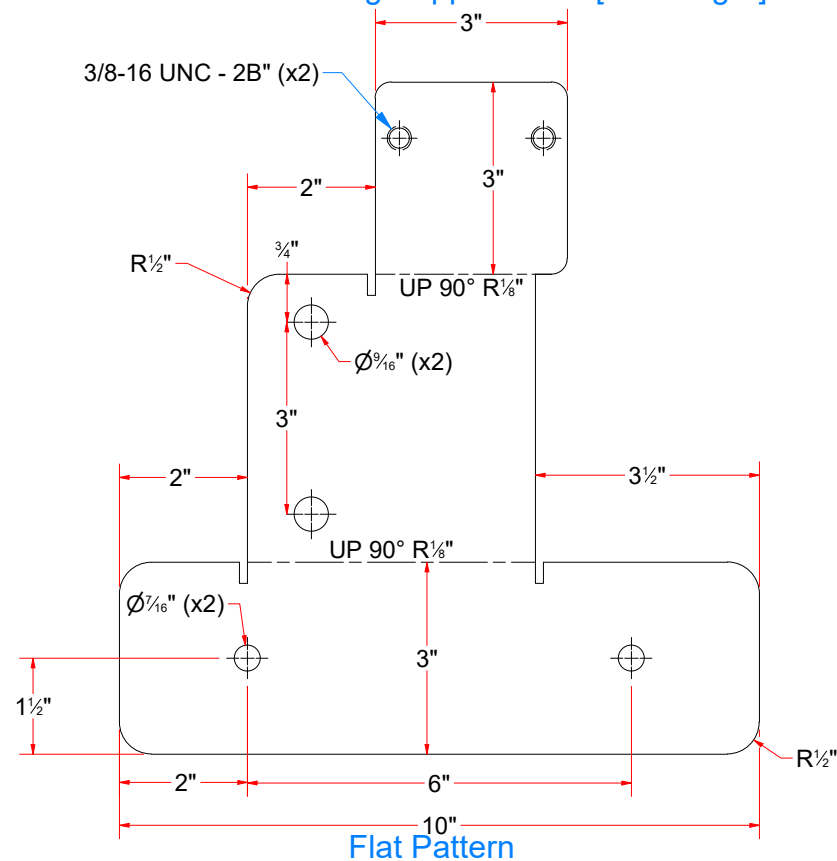
TB3AAAAB - Bearing Support Plate [Driver]



Flat Pattern



TB3BAAAB - Bearing Support Plate [Passenger]



Flat Pattern



AVW EQUIPMENT CO., INC.
105 S. 9TH AVENUE
MAYWOOD, IL 60153
Tel: 708-343-7738 Fax: 708-343-9065
WWW.AVWEQUIPMENT.COM

- COMPANY PROPRIETARY NOTE -

THIS DRAWING AND ITS DESIGNS ARE PROPERTY OF AVW EQUIPMENT CO. & IT IS NOT TO BE USED OR REPRODUCED WITHOUT THE PERMISSION FROM AVW CO.

DRAWN BY

Ljubomir

CUSTOMER: Tommy's Car Wash

CHECKED BY

PROJECT: Tommy's CW Tire Shine

QTY

DESCRIPTION: Bearing Support Plate [Driver]

RELEASE DATE

7/13/2021

PART NUMBER: TB3AAAAB

REV#

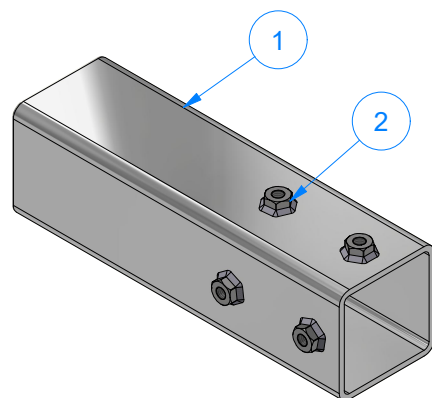
DIMENSION ARE IN INCHES & PROVIDED PRIOR TO SURFACE TREATMENTS, UNLESS NOTED.

SIZE A

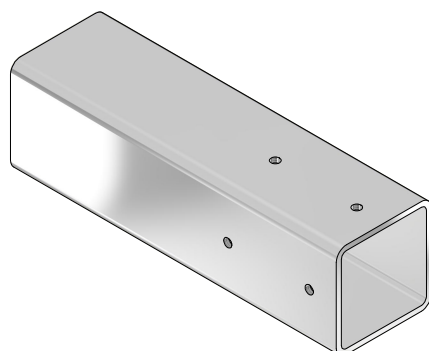
EST WEIGHT:

SHEET 23 of 42

PATH: L:\Libraries\Productivity\Tire Washer\Push Bar Assembly\Parts\TB3AAAAB - Bearing Support Plate [Driver].ipt

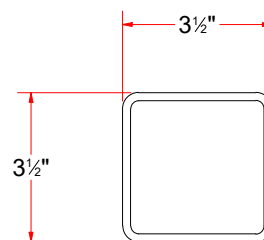


TB3AAAAA - Sq. Tub. Assem. 3-1/2" x 12"

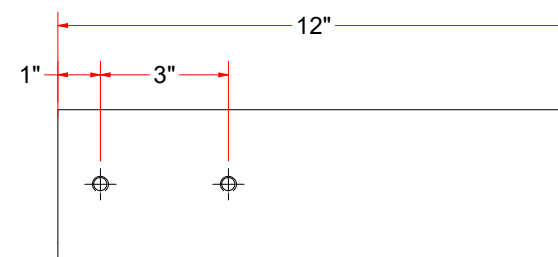


TB3AAAAAA - Sq. Tubing 3 1/2" x 3/16" x 12" LG.

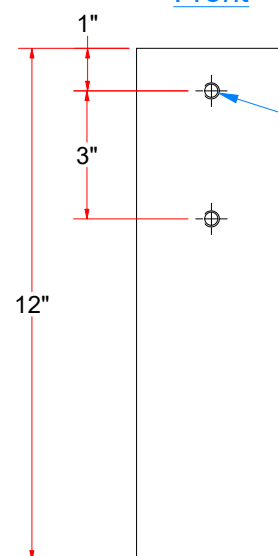
Parts List			
ITEM	QTY	DESCRIPTION	PART NUMBER
1	1	Sq. Tubing 3 1/2" x 3/16" x 12" LG.	TB3AAAAAA
2	4	3/8"-16 18-8ss Heavy Hex Nut	HHN3816



Front



Right



Bottom

3/8-16 UNC - 2B THRU (x2)"



AVW EQUIPMENT CO., INC.
105 S. 9TH AVENUE
MAYWOOD, IL 60153
Tel: 708-343-7738 Fax: 708-343-9065
WWW.AVWEQUIPMENT.COM

- COMPANY PROPRIETARY NOTE -

THIS DRAWING AND ITS DESIGNS ARE PROPERTY OF AVW EQUIPMENT CO. & IT IS NOT TO BE USED OR REPRODUCED WITHOUT THE PERMISSION FROM AVW CO.

DRAWN BY

Ljubomir

CUSTOMER: Tommy's Car Wash

CHECKED BY

PROJECT: Tommy's CW Tire Shine

QTY

DESCRIPTION: Sq. Tub. Assem. 3-1/2" x 12"

RELEASE DATE

7/13/2021

PART NUMBER: TB3AAAAA

REV#

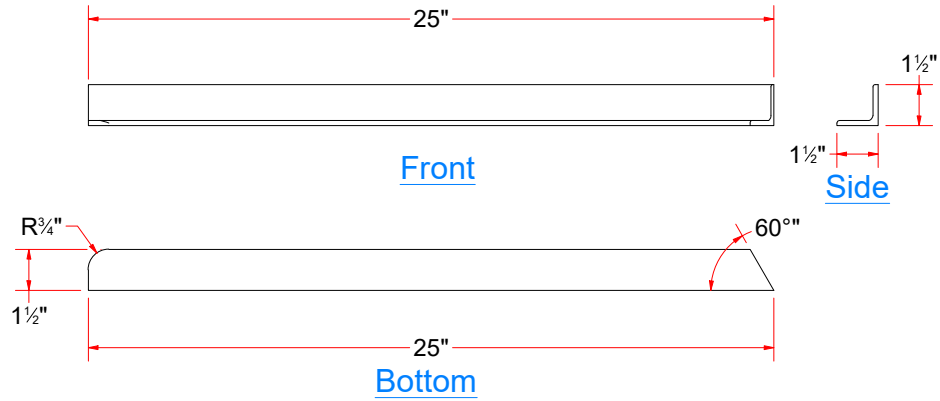
DIMENSION ARE IN INCHES & PROVIDED PRIOR TO SURFACE TREATMENTS, UNLESS NOTED.

SIZE
A

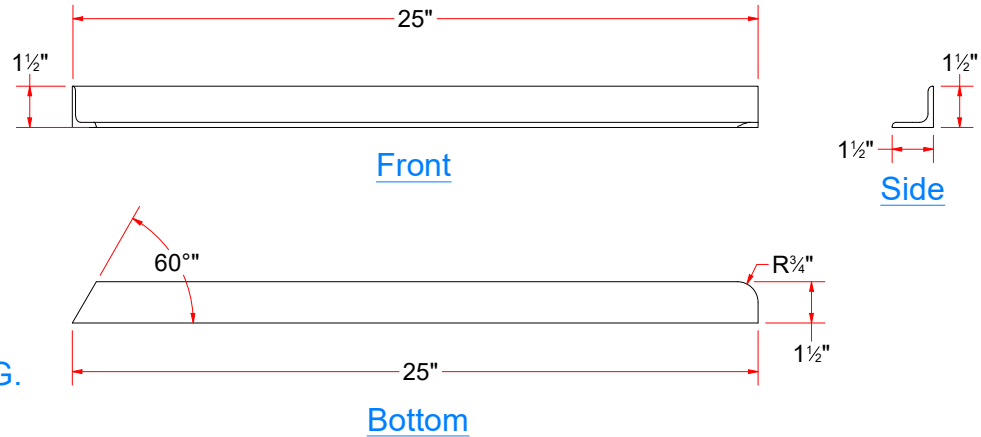
EST WEIGHT:

SHEET 24 of 42

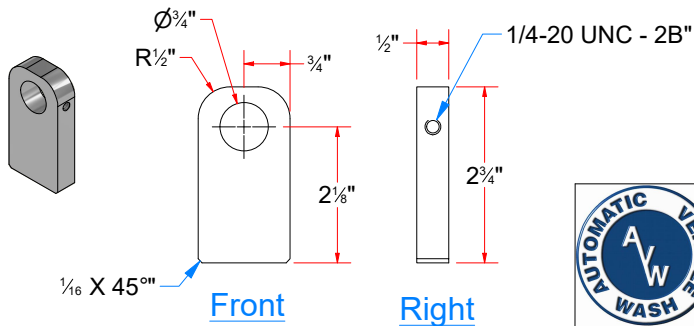
TB3AAAAC - Angle #3/16" x 1 1/2" x 1 1/2" x 14" LG.



TB3BAAAC - Angle #3/16" x 1-1/2" x 1-1/2" x 25 LG.



TB3AAAAE - Support Bracket for Roller Guide Shaft

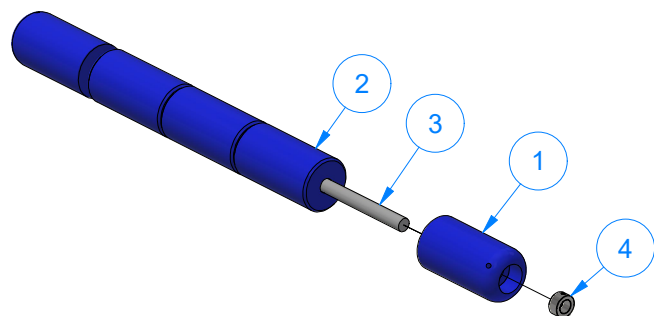


AVW EQUIPMENT CO., INC.
105 S. 9TH AVENUE
MAYWOOD, IL 60153
Tel: 708-343-7738 Fax: 708-343-9065
WWW.AVWEQUIPMENT.COM

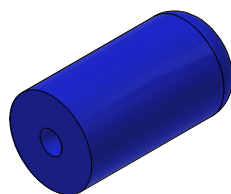
- COMPANY PROPRIETARY NOTE -
THIS DRAWING AND ITS DESIGNS ARE PROPERTY OF AVW EQUIPMENT CO. &
IT IS NOT TO BE USED OR REPRODUCED WITHOUT THE PERMISSION FROM AVW CO.

DRAWN BY	Ljubomir	CUSTOMER: Tommy's Car Wash	
CHECKED BY		PROJECT: Tommy's CW Tire Shine	
QTY		DESCRIPTION: Angle #3/16" x 1 1/2" x 1 1/2" x 14" LG.	
RELEASE DATE	7/13/2021	PART NUMBER: TB3AAAAC	REV#
DIMENSION ARE IN INCHES & PROVIDED PRIOR TO SURFACE TREATMENTS, UNLESS NOTED.		SIZE A	EST WEIGHT:
			SHEET 25 of 42

PATH:L:\Libraries\Productivity\Tire Washer\Push Bar Assembly\Parts\TB3AAAAC - 1-1_2 Angle Bar [Driver].ipt

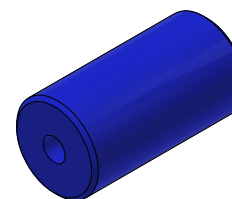
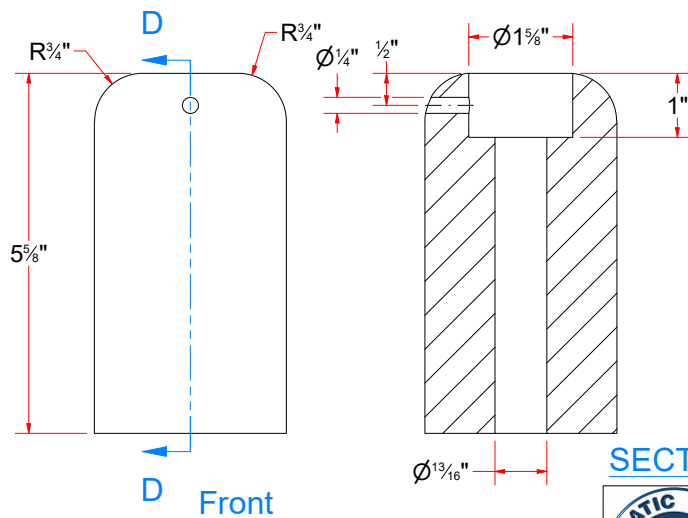


TB3AAAD - Roller Guide Set



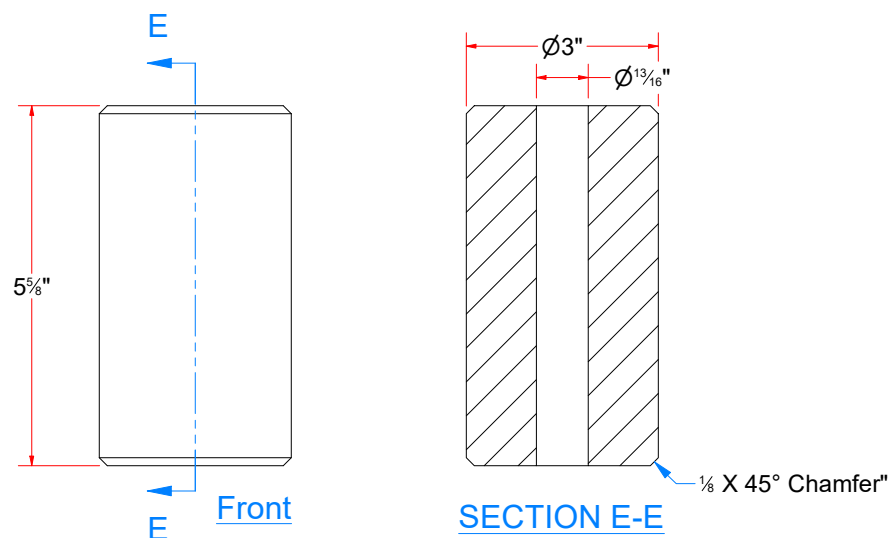
TB3AAADA

Side Roller 3" OD. x 13/16" ID. x 5 5/8" LG.



TB3AAADB

Middle Roller 3" OD. x 13/16" ID. x 5 5/8" LG.



AVW EQUIPMENT CO., INC.
105 S. 9TH AVENUE
MAYWOOD, IL 60153
Tel: 708-343-7738 Fax: 708-343-9065
WWW.AVWEQUIPMENT.COM

- COMPANY PROPRIETARY NOTE -

THIS DRAWING AND ITS DESIGNS ARE PROPERTY OF AVW EQUIPMENT CO. & IT IS NOT TO BE USED OR REPRODUCED WITHOUT THE PERMISSION FROM AVW CO.

DRAWN BY

Ljubomir

CUSTOMER: Tommy's Car Wash

CHECKED BY

PROJECT: Tommy's CW Tire Shine

QTY

DESCRIPTION: Roller Guide Set

RELEASE DATE

7/13/2021

PART NUMBER: TB3AAAD

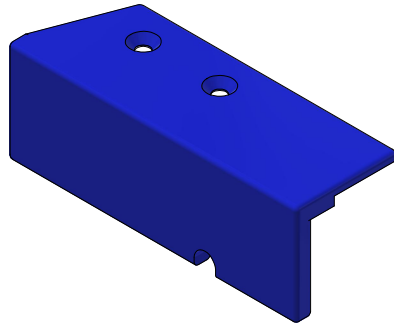
REV#

DIMENSION ARE IN INCHES & PROVIDED PRIOR TO SURFACE TREATMENTS, UNLESS NOTED.

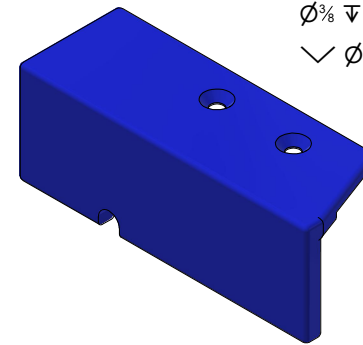
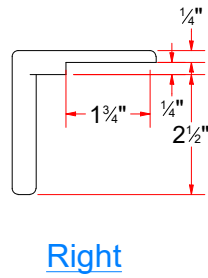
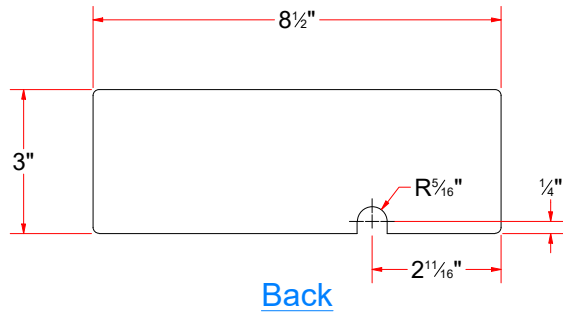
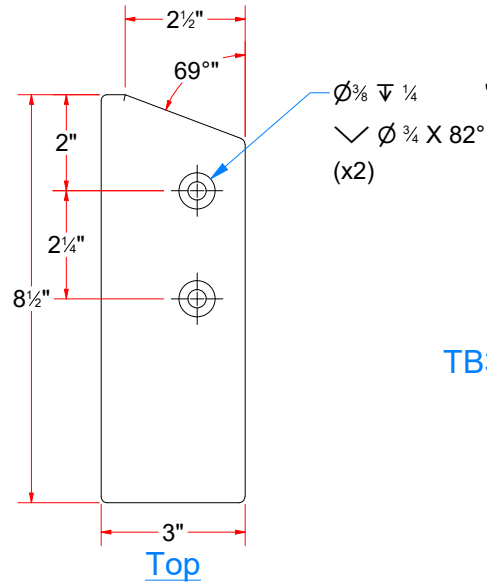
SIZE
A

EST WEIGHT:

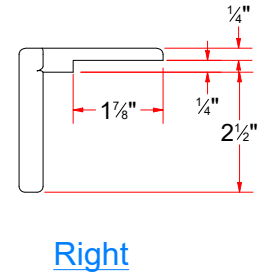
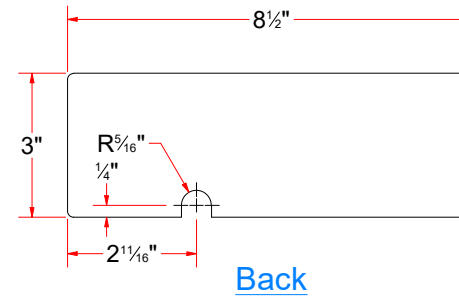
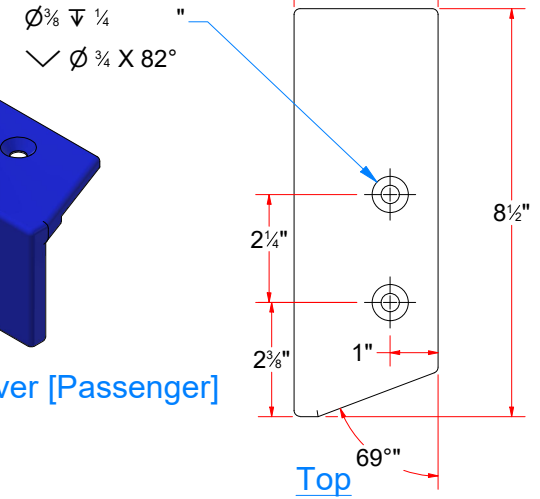
SHEET 26 of 42



TB3AAAC - Top Plastic Cover [Driver]



TB3BAAC - Top Plastic Cover [Passenger]



AVW EQUIPMENT CO., INC.
105 S. 9TH AVENUE
MAYWOOD, IL 60153
Tel: 708-343-7738 Fax: 708-343-9065
WWW.AVWEQUIPMENT.COM

- COMPANY PROPRIETARY NOTE -

THIS DRAWING AND ITS DESIGNS ARE PROPERTY OF AVW EQUIPMENT CO. & IT IS NOT TO BE USED OR REPRODUCED WITHOUT THE PERMISSION FROM AVW CO.

DRAWN BY

Ljubomir

CUSTOMER: Tommy's Car Wash

CHECKED BY

PROJECT: Tommy's CW Tire Shine

QTY

DESCRIPTION: Top Plastic Cover [Driver]

RELEASE DATE

7/13/2021

PART NUMBER: TB3AAAC

REV#

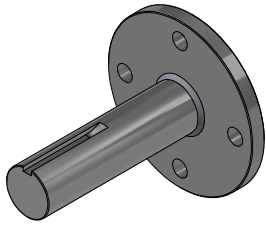
DIMENSION ARE IN INCHES & PROVIDED PRIOR TO SURFACE TREATMENTS, UNLESS NOTED.

SIZE
A

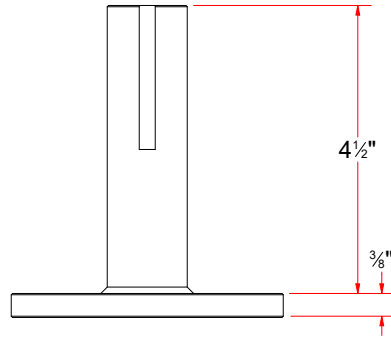
EST WEIGHT:

SHEET 27 of 42

PATH: L:\Libraries\Productivity\Tire Washer\Push Bar Assembly\Parts\TB3AAAC - Top Plastic Cover [Driver].ipt



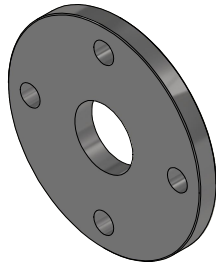
TB3AAAE - 4-1/2" Stub Shaft



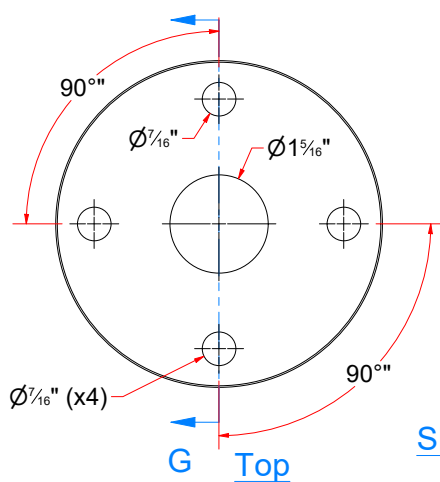
Parts List			
ITEM	QTY	DESCRIPTION	PART NUMBER
1	1	Bottom Plate For Stub Shaft (1-1_4in ID)	TB3AAAEB
2	1	Round Shaft - 1 1/4" OD. x 4 3/4" LG.	TB3AAAEA



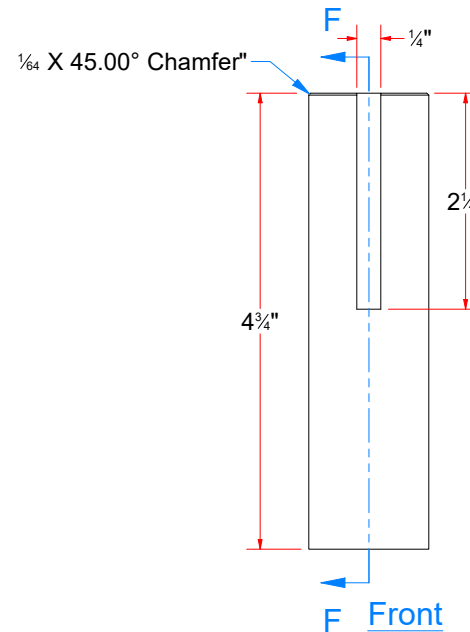
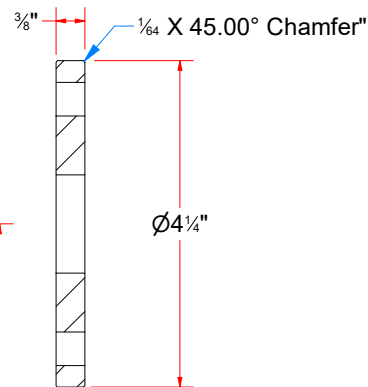
TB3AAAEA - Round Shaft - 1 1/4" OD. x 4 3/4" LG.



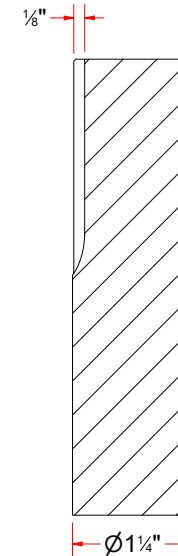
TB3AAAEB - Bottom Plate For Stub Shaft (1-1_4in ID)



SECTION G-G



F Front



SECTION F-F



AVW EQUIPMENT CO., INC.
105 S. 9TH AVENUE
MAYWOOD, IL 60153
Tel: 708-343-7738 Fax: 708-343-9065
WWW.AVWEQUIPMENT.COM

- COMPANY PROPRIETARY NOTE -

THIS DRAWING AND ITS DESIGNS ARE PROPERTY OF AVW EQUIPMENT CO. & IT IS NOT TO BE USED OR REPRODUCED WITHOUT THE PERMISSION FROM AVW CO.

DRAWN BY

Ljubomir

CUSTOMER: Tommy's Car Wash

CHECKED BY

PROJECT: Tommy's CW Tire Shine

QTY

DESCRIPTION: 4-1/2" Stub Shaft

RELEASE DATE

7/13/2021

PART NUMBER: TB3AAAE

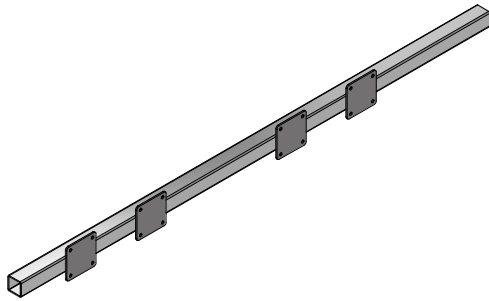
REV#

DIMENSION ARE IN INCHES & PROVIDED PRIOR TO SURFACE TREATMENTS, UNLESS NOTED.

SIZE
A

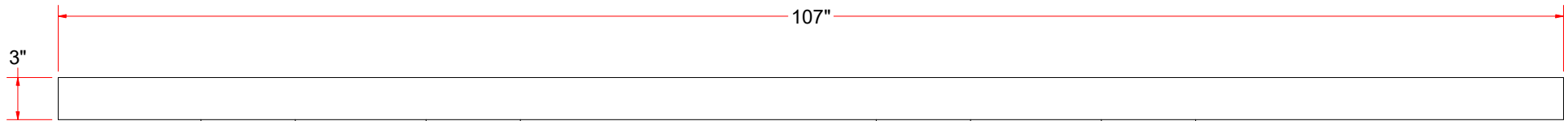
EST WEIGHT:

SHEET 28 of 42

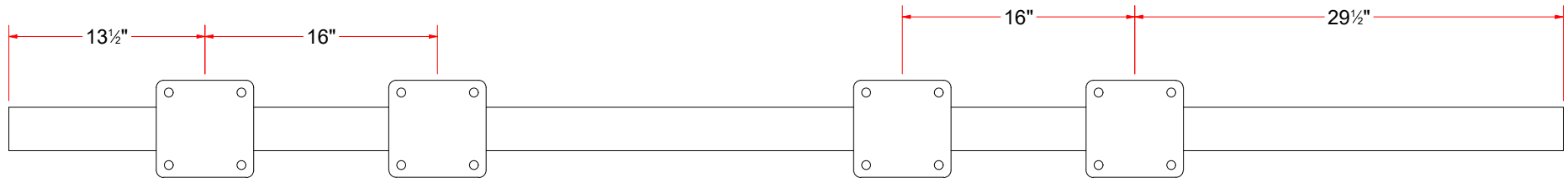


R-TB4AAC - Brush Support Frame

Parts List			
ITEM	QTY	DESCRIPTION	PART NUMBER
1	1	Sq. Tubbing #7Ga x 3" x 3" x 107" LG	SQTSS07GX300X10700
2	4	Plate #1/4" x 6 11/16" x 6 11/16"	PLSS250X0669X0669



Top



Front



AVW EQUIPMENT CO., INC.
105 S. 9TH AVENUE
MAYWOOD, IL 60153
Tel: 708-343-7738 Fax: 708-343-9065
WWW.AVWEQUIPMENT.COM

- COMPANY PROPRIETARY NOTE -

THIS DRAWING AND ITS DESIGNS ARE PROPERTY OF AVW EQUIPMENT CO. & IT IS NOT TO BE USED OR REPRODUCED WITHOUT THE PERMISSION FROM AVW CO.

DRAWN BY

Ljubomir

CUSTOMER: Tommy's Car Wash

CHECKED BY

PROJECT: Tommy's CW Tire Shine

QTY

DESCRIPTION: Brush Support Frame

RELEASE DATE

7/13/2021

PART NUMBER: R-TB4AAC

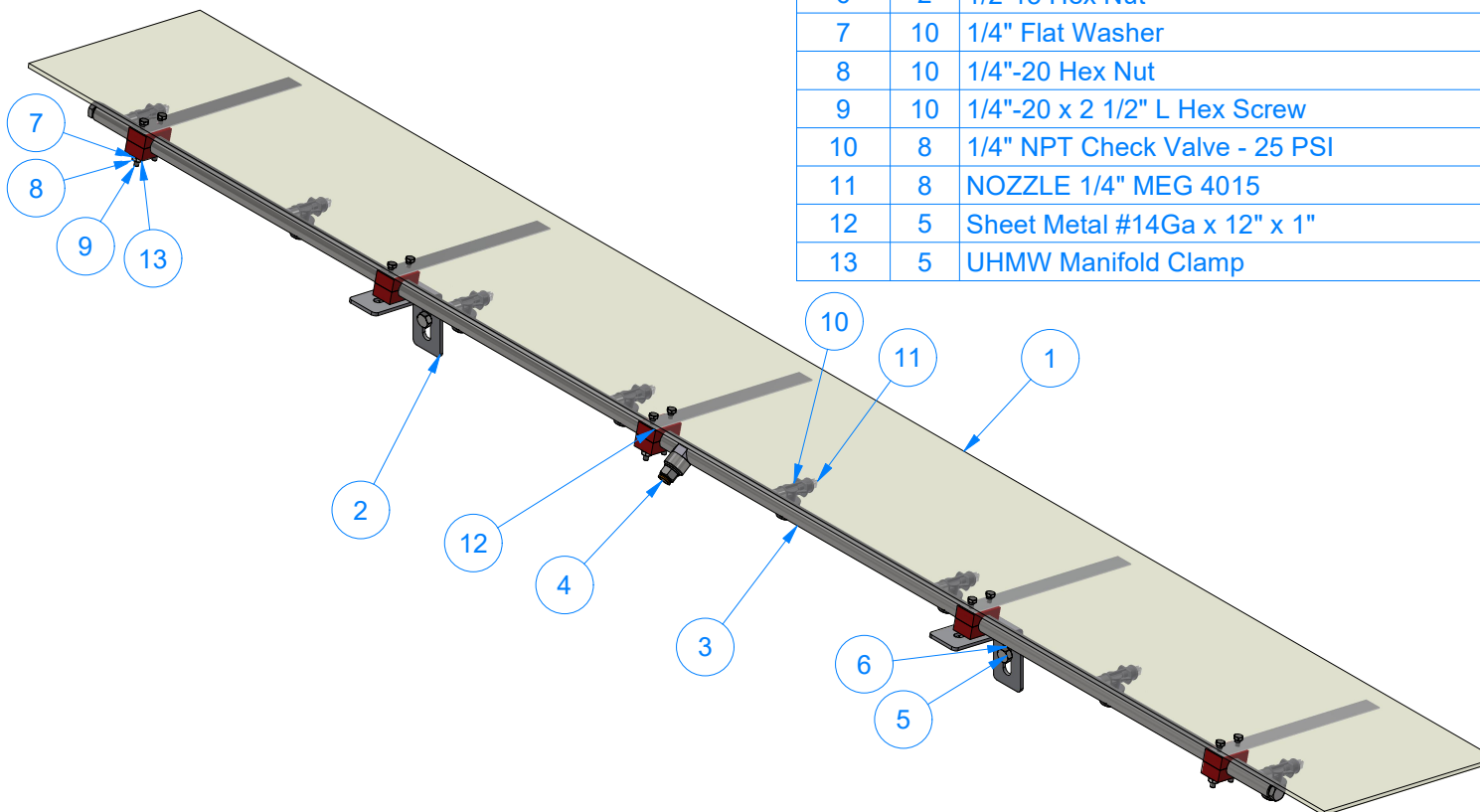
REV#

DIMENSION ARE IN INCHES & PROVIDED PRIOR TO SURFACE TREATMENTS, UNLESS NOTED.

SIZE
A

EST WEIGHT:

SHEET 29 of 42



Parts List			
ITEM	QTY	DESCRIPTION	PART NUMBER
1	1	Polycarbonate Tire Shine Brush Cover	TB2MB-CUS999-0417
2	2	Manifold Bracket	TB2MC-CUS999-0417
3	1	Tire Dressing Manifold, Spray Style Tube, 8 Manifolds	TB2MA-CUS999-0417
4	1	1_2 in Air Quick Connect Fitting	1_2 in Air Quick Connect Fitting
5	2	1/2" - 13 x 1.25" UNC Hex Screw	HHCS1213125
6	2	1/2-13 Hex Nut	HN1213
7	10	1/4" Flat Washer	FW14
8	10	1/4"-20 Hex Nut	HN1420
9	10	1/4"-20 x 2 1/2" L Hex Screw	HHCS1420250
10	8	1/4" NPT Check Valve - 25 PSI	V-DC14X14-25LB
11	8	NOZZLE 1/4" MEG 4015	1-4MEG-4015
12	5	Sheet Metal #14Ga x 12" x 1"	TB2ME-CUS999-0417
13	5	UHMW Manifold Clamp	TB2MD-CUS999-0417

TB2M-CUS999-0417 - Manifold Assembly, with Cover



AVW EQUIPMENT CO., INC.
105 S. 9TH AVENUE
MAYWOOD, IL 60153
Tel: 708-343-7738 Fax: 708-343-9065
WWW.AVWEQUIPMENT.COM

- COMPANY PROPRIETARY NOTE -

THIS DRAWING AND ITS DESIGNS ARE PROPERTY OF AVW EQUIPMENT CO. & IT IS NOT TO BE USED OR REPRODUCED WITHOUT THE PERMISSION FROM AVW CO.

PATH: L:\Designs\Product Lines\Tommy's Car Wash\1. TOMMY PRODUCTIVITY\Tire Shine\Tire Shine Manifold Assembly\TB2M-CUS999-0417 - Tommy Manifold Assembly, with Cover\TB2M-CUS999-0417 - Tommy Manifold Assembly, with Cover.iam

DRAWN BY

Ljubomir

CUSTOMER: Tommy's Car Wash

CHECKED BY

PROJECT: Tommy's CW Tire Shine

QTY

DESCRIPTION: Manifold Assembly, with Cover

RELEASE DATE

7/13/2021

PART NUMBER: TB2M-CUS999-0417

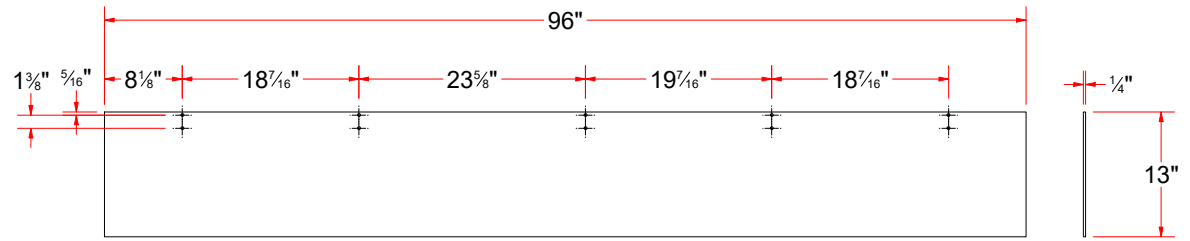
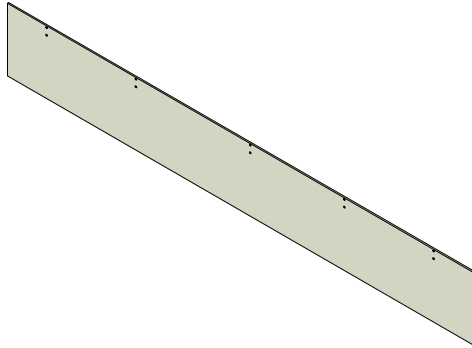
REV#

DIMENSION ARE IN INCHES & PROVIDED PRIOR TO SURFACE TREATMENTS, UNLESS NOTED.

SIZE
A

EST WEIGHT:

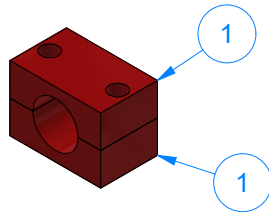
SHEET 30 of 42



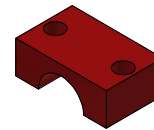
TB2MB-CUS999-0417 - Polycarbonate Tire Shine Brush Cover

Top

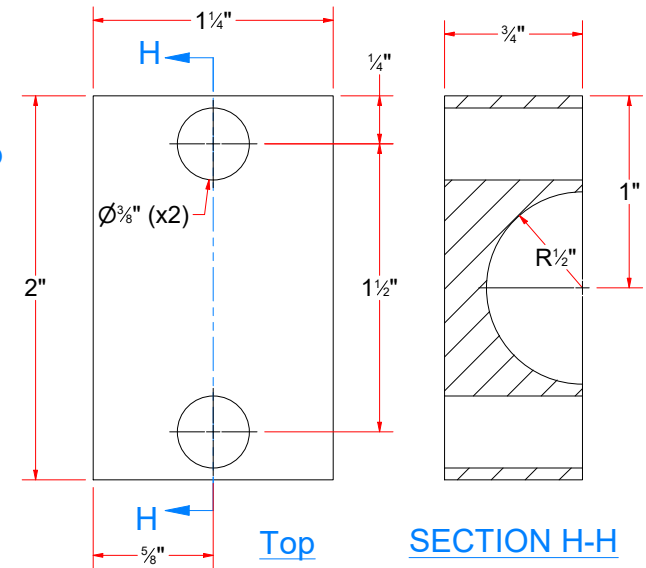
Side



TB2MD-CUS999-0417
UHMW Manifold Clamp



TB2MDA-CUS999-0417
Half of UHMW Manifold Clamp



Top

SECTION H-H

Parts List

ITEM	QTY	DESCRIPTION	PART NUMBER
1	2	Half of UHMW Manifold Clamp	TB2MDA-CUS999-0417



AVW EQUIPMENT CO., INC.
105 S. 9TH AVENUE
MAYWOOD, IL 60153
Tel: 708-343-7738 Fax: 708-343-9065
WWW.AVWEQUIPMENT.COM

- COMPANY PROPRIETARY NOTE -

THIS DRAWING AND ITS DESIGNS ARE PROPERTY OF AVW EQUIPMENT CO. & IT IS NOT TO BE USED OR REPRODUCED WITHOUT THE PERMISSION FROM AVW CO.

DRAWN BY

Ljubomir

CUSTOMER: Tommy's Car Wash

CHECKED BY

PROJECT: Tommy's CW Tire Shine

QTY

DESCRIPTION: Polycarbonate Tire Shine Brush Cover

RELEASE DATE

7/13/2021

PART NUMBER: TB2MB-CUS999-0417

REV#

DIMENSION ARE IN INCHES & PROVIDED PRIOR TO SURFACE TREATMENTS, UNLESS NOTED.

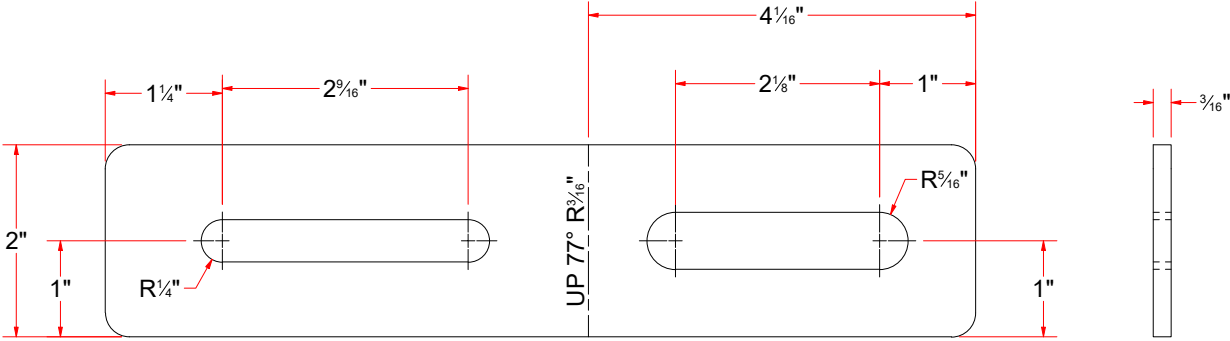
SIZE
A

EST WEIGHT:

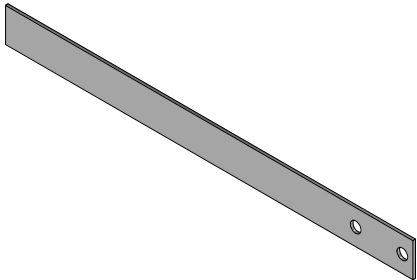
SHEET 31 of 42



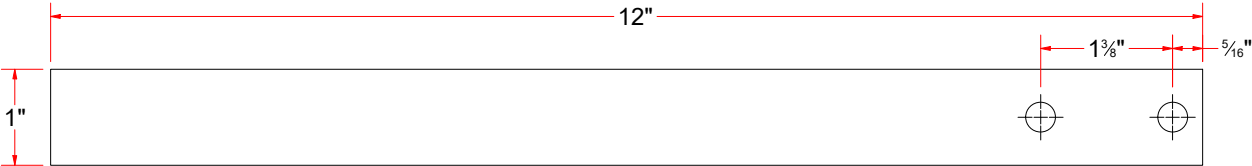
TB2MC-CUS999-0417 - Manifold Bracket



Flat Pattern



TB2ME-CUS999-0417 - Sheet Metal #14Ga x 12" x 1"



Top



Side

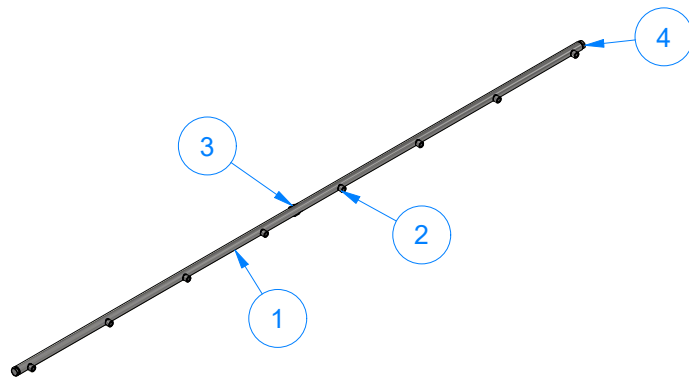


AVW EQUIPMENT CO., INC.
105 S. 9TH AVENUE
MAYWOOD, IL 60153
Tel: 708-343-7738 Fax: 708-343-9065
WWW.AVWEQUIPMENT.COM

- COMPANY PROPRIETARY NOTE -
THIS DRAWING AND ITS DESIGNS ARE PROPERTY OF AVW EQUIPMENT CO. &
IT IS NOT TO BE USED OR REPRODUCED WITHOUT THE PERMISSION FROM AVW CO.

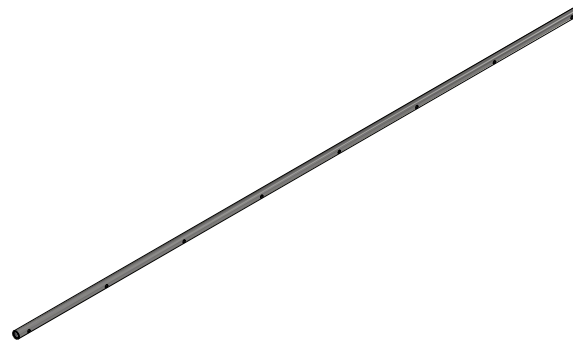
DRAWN BY	Ljubomir	CUSTOMER: Tommy's Car Wash	
CHECKED BY		PROJECT: Tommy's CW Tire Shine	
QTY		DESCRIPTION: Manifold Bracket	
RELEASE DATE	7/13/2021	PART NUMBER: TB2MC-CUS999-0417	REV#

DIMENSION ARE IN INCHES & PROVIDED PRIOR TO SURFACE TREATMENTS, UNLESS NOTED.

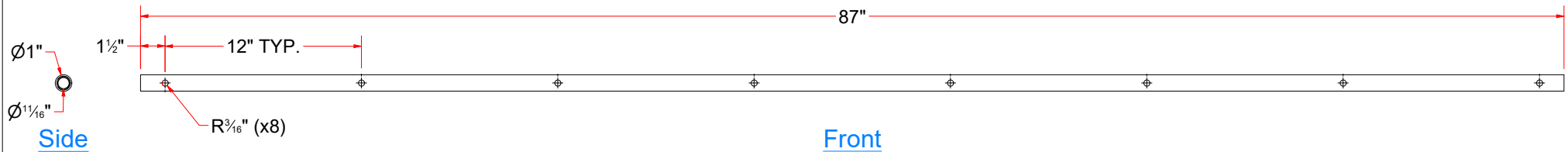


Parts List			
ITEM	QTY	DESCRIPTION	PART NUMBER
1	1	Round Tubing .12 WALL x 1" O.D. x 87" LG.	TB2MAA-CUS999-0417
2	8	1/4" Half Coupling	HC304025
3	1	1/2" Half Coupling	HC304050
4	2	1/2" NPT Stainless Steel Hex Head Solid Plug	PLUG304050-HEX

TB2MA-CUS999-0417
Tire Dressing Manifold, Spray Style Tube, 8 Manifolds



TB2MAA-CUS999-0417 - Round Tubing .12 WALL x 1" O.D. x 87" LG.



AVW EQUIPMENT CO., INC.
105 S. 9TH AVENUE
MAYWOOD, IL 60153
Tel: 708-343-7738 Fax: 708-343-9065
WWW.AVWEQUIPMENT.COM

- COMPANY PROPRIETARY NOTE -
THIS DRAWING AND ITS DESIGNS ARE PROPERTY OF AVW EQUIPMENT CO. &
IT IS NOT TO BE USED OR REPRODUCED WITHOUT THE PERMISSION FROM AVW CO.

DRAWN BY

Ljubomir

CUSTOMER: Tommy's Car Wash

CHECKED BY

PROJECT: Tommy's CW Tire Shine

QTY

DESCRIPTION: Tire Dressing Manifold, Spray Style Tube, 8 Manifolds

RELEASE
DATE

7/13/2021

PART NUMBER: TB2MA-CUS999-0417

REV#

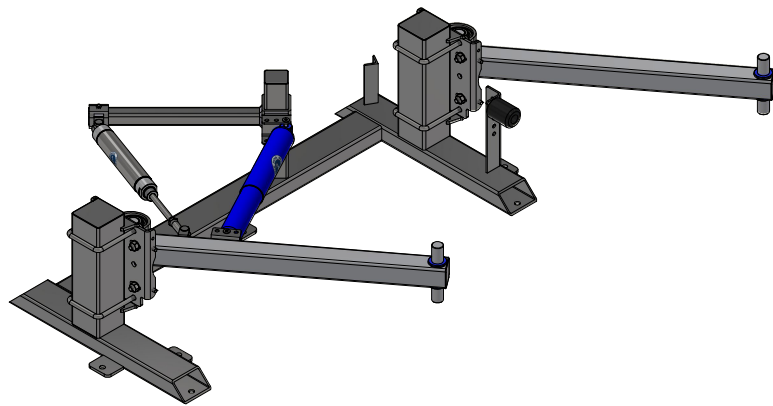
DIMENSION ARE IN INCHES & PROVIDED PRIOR
TO SURFACE TREATMENTS, UNLESS NOTED.

SIZE
A

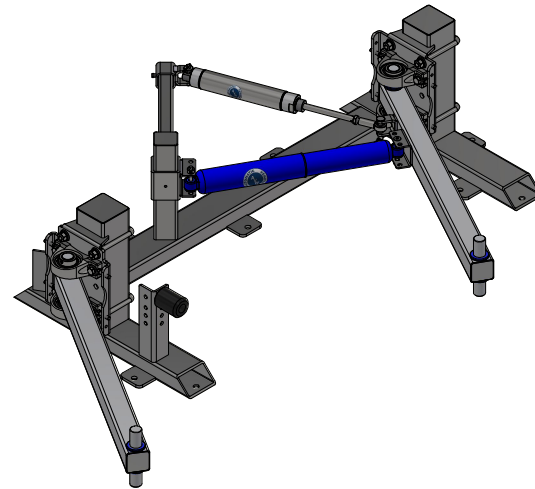
EST WEIGHT:

SHEET 33 of 42

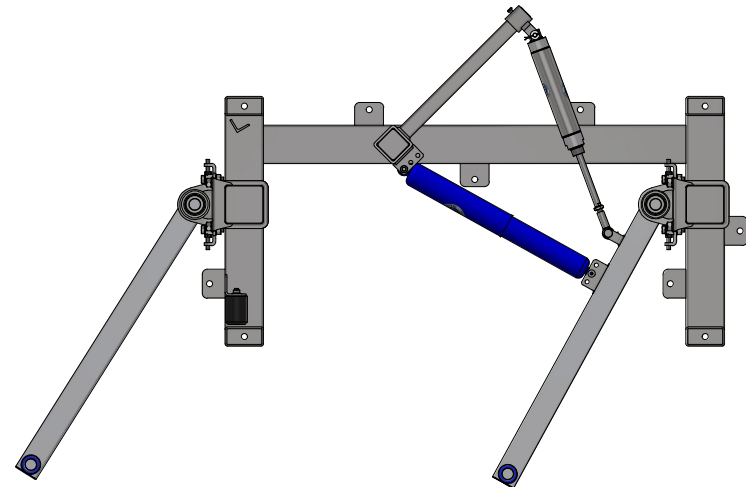
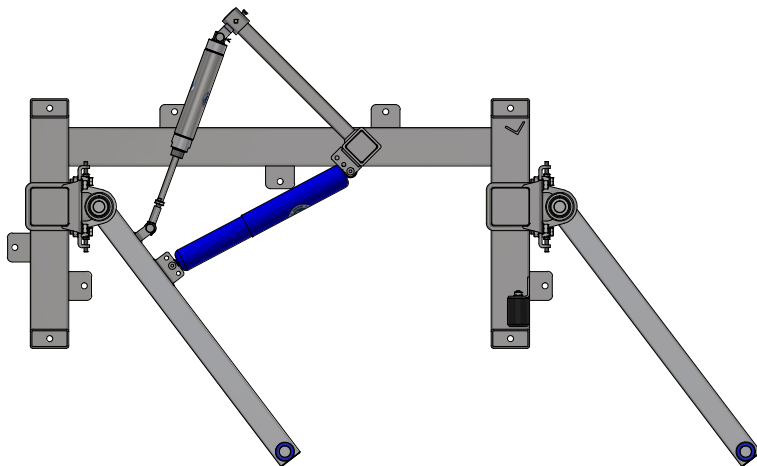
PATH:L:\Libraries\Productivity\Tire Washer\Manifolds\TB2MAA-CUS999-0417 - Tire Dressing Manifold, Spray Style Tube, 8 Manifolds\TB2MAA-CUS999-0417 - Tire Dressing Manifold, Spray Style Tube, 8 Manifolds.iam



TB3AB - Tire Dressing Frame Assembly [Driver]



TB3BB - Tire Dressing Frame Assembly [Passenger]



AVW EQUIPMENT CO., INC.
105 S. 9TH AVENUE
MAYWOOD, IL 60153
Tel: 708-343-7738 Fax: 708-343-9065
WWW.AVWEQUIPMENT.COM

- COMPANY PROPRIETARY NOTE -

THIS DRAWING AND ITS DESIGNS ARE PROPERTY OF AVW EQUIPMENT CO. & IT IS NOT TO BE USED OR REPRODUCED WITHOUT THE PERMISSION FROM AVW CO.

DRAWN BY

Ljubomir

CUSTOMER: Tommy's Car Wash

CHECKED BY

PROJECT: Tommy's CW Tire Shine

QTY

DESCRIPTION: Tire Dressing Frame Assembly [Driver]

RELEASE DATE

7/13/2021

PART NUMBER: TB3AB

REV#

DIMENSION ARE IN INCHES & PROVIDED PRIOR TO SURFACE TREATMENTS, UNLESS NOTED.

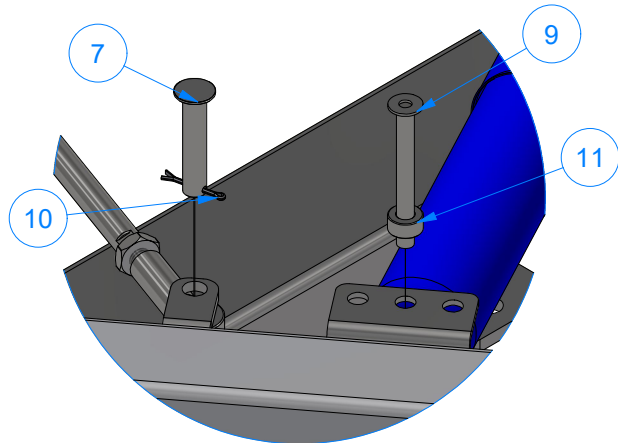
SIZE
A

EST WEIGHT:

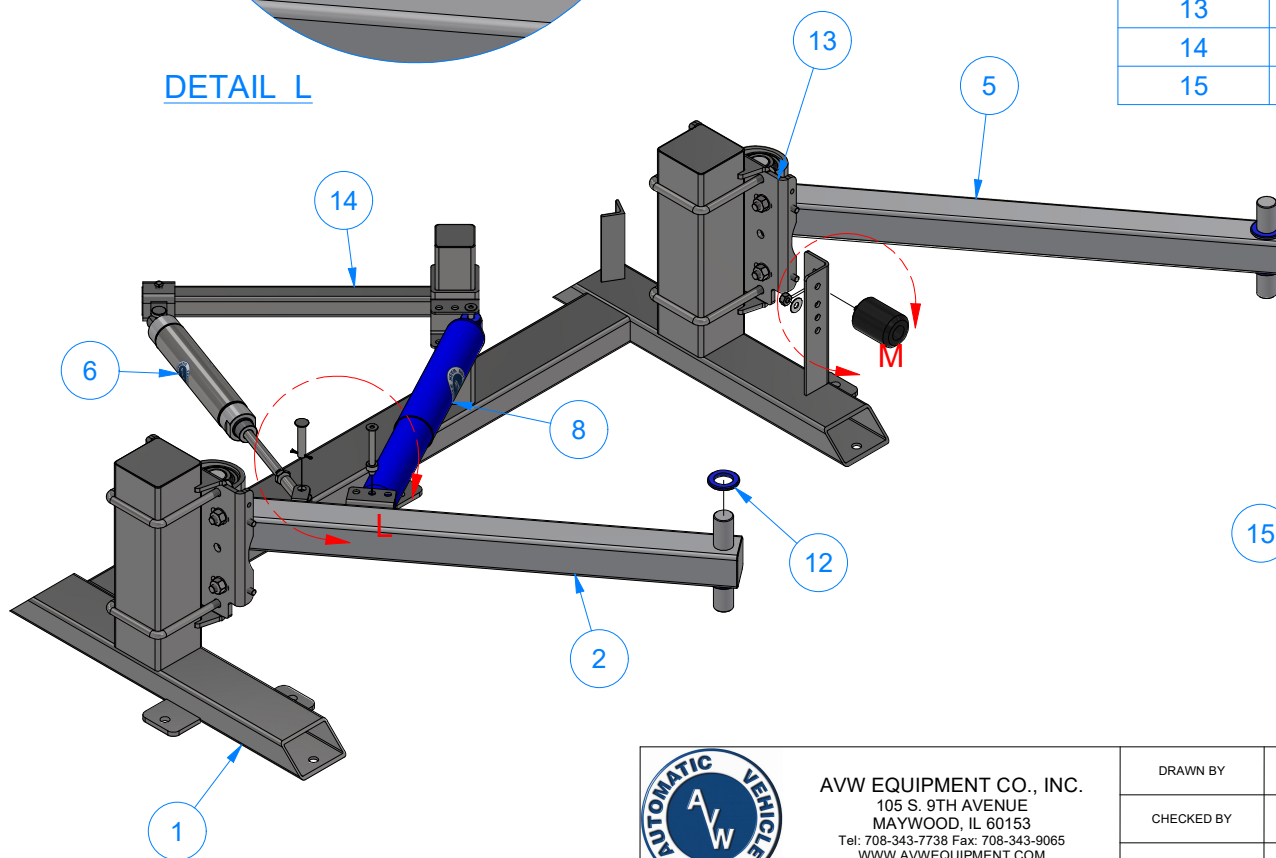
SHEET 34 of 42

PATH: L:\Libraries\Productivity\Tire Washer\Tire Shine Frame Assembly\TB3AB - Tire Shine Frame Assembly [Driver].iam

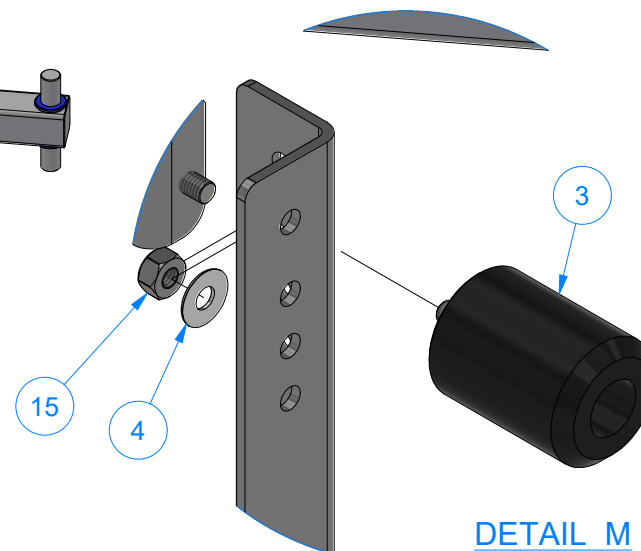
TB3AB - Tire Dressing Frame Assembly [Driver]



DETAIL L



Parts List		
ITEM	QTY	DESCRIPTION
1	1	Tire Shine Frame [Driver]
2	1	Long Tire Shine Arm-W/ Brackets
3	1	RUBBER BUMPER - LONG
4	1	3/8" Flat Washer
5	1	Long Tire Shine Arm-w/o Brackets
6	1	Air Cylinder 2" x 8"
7	1	Pin 1/2" x 2 1/2"
8	1	Blue Shock Absorber Assembly
9	1	Pin 3/8" x 3 1/2" LG
10	1	Cotter Pin
11	1	3/8" Set Screw Collar
12	8	UHMW Spacer 1-1/4"ID x 2"OD
13	2	Arm Mount Plate Assembly
14	1	Shock Absorber Mounting Bracket Assembly
15	1	3/8"-16 18-8ss Heavy Hex Nut



DETAIL M



AVW EQUIPMENT CO., INC.
105 S. 9TH AVENUE
MAYWOOD, IL 60153
Tel: 708-343-7738 Fax: 708-343-9065
WWW.AVWEQUIPMENT.COM

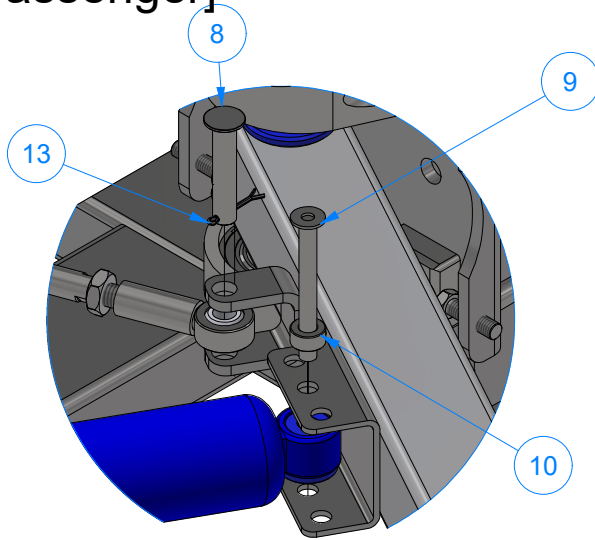
- COMPANY PROPRIETARY NOTE -

THIS DRAWING AND ITS DESIGNS ARE PROPERTY OF AVW EQUIPMENT CO. & IT IS NOT TO BE USED OR REPRODUCED WITHOUT THE PERMISSION FROM AVW CO.

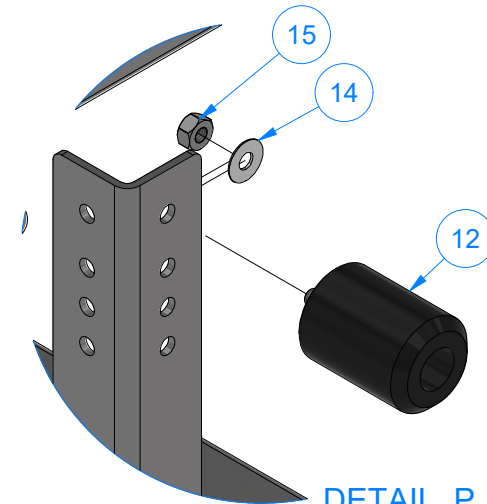
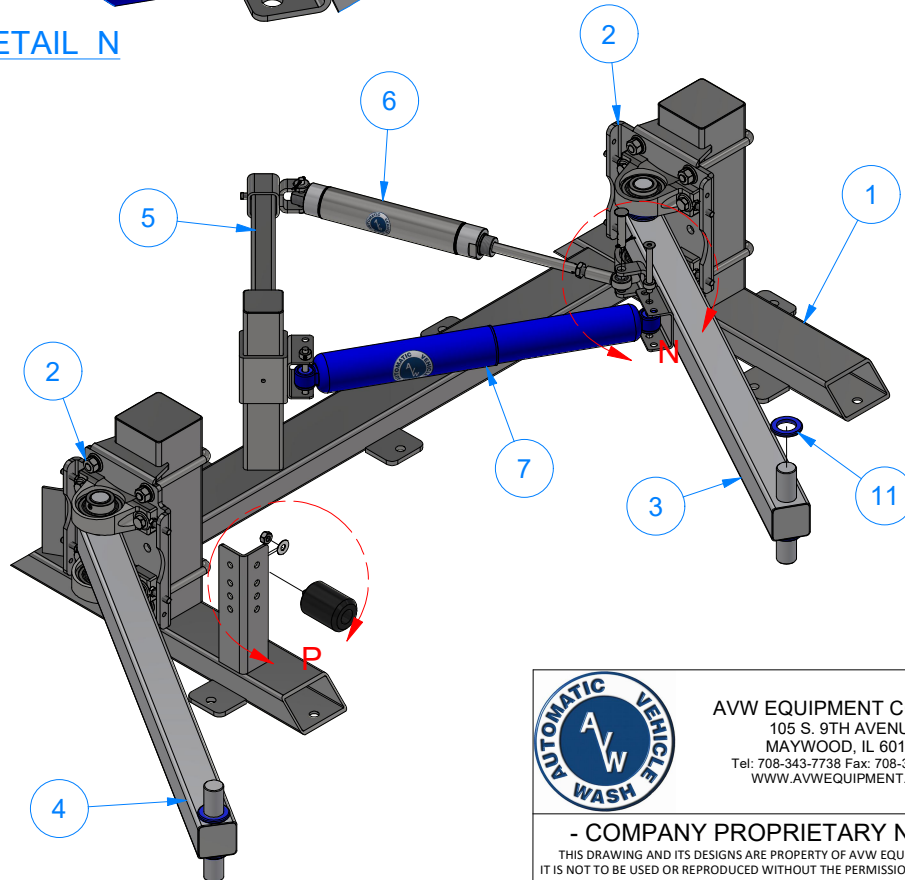
DRAWN BY	Ljubomir	CUSTOMER: Tommy's Car Wash	
CHECKED BY		PROJECT: Tommy's CW Tire Shine	
QTY		DESCRIPTION: Tire Dressing Frame Assembly [Driver]	
RELEASE DATE	7/13/2021	PART NUMBER: TB3AB	REV#
DIMENSION ARE IN INCHES & PROVIDED PRIOR TO SURFACE TREATMENTS, UNLESS NOTED.		SIZE A	EST WEIGHT:
			SHEET 35 of 42

PATH:L:\Libraries\Productivity\Tire Washer\Tire Shine Frame Assembly\TB3AB - Tire Shine Frame Assembly [Driver].iam

TB3BB - Tire Dressing Frame Assembly [Passenger]



DETAIL N



DETAIL P

Parts List		
ITEM	QTY	DESCRIPTION
1	1	Tire Shine Frame [Passenger]
2	2	Arm Mount Plate Assembly
3	1	Long Tire Shine Arm-W/ Brackets
4	1	Long Tire Shine Arm-w/o Brackets
5	1	Shock Absorber Mounting Bracket Assembly
6	1	Air Cylinder 2" x 8"
7	1	Blue Shock Absorber Assembly
8	1	Pin 1/2" x 2 1/2"
9	1	Pin 3/8" x 3 1/2" LG
10	1	3/8" Set Screw Collar
11	8	UHMW Spacer 1-1/4"ID x 2"OD
12	1	RUBBER BUMPER - LONG
13	1	Cotter Pin
14	1	3/8" Flat Washer
15	1	3/8"-16 18-8ss Heavy Hex Nut



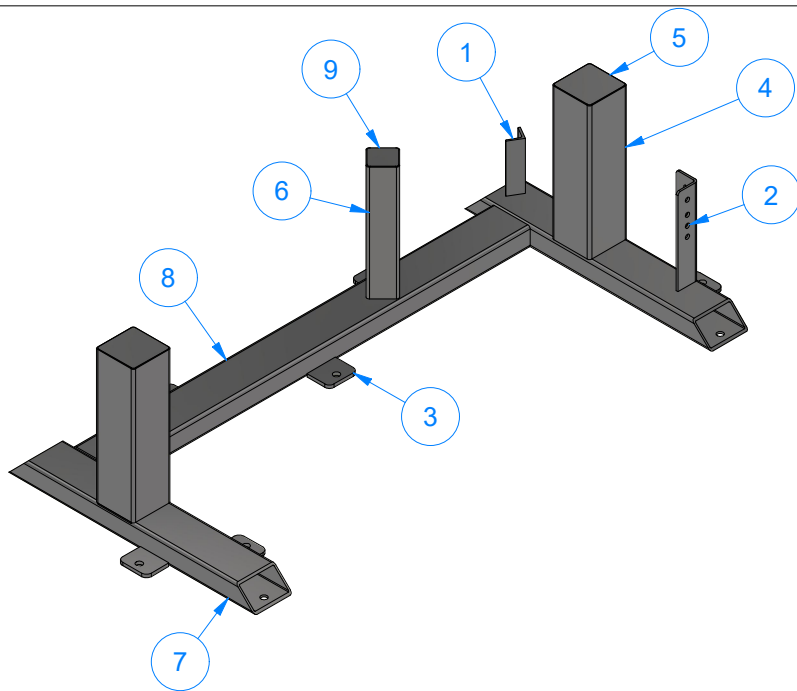
AVW EQUIPMENT CO., INC.
105 S. 9TH AVENUE
MAYWOOD, IL 60153
Tel: 708-343-7738 Fax: 708-343-9065
WWW.AVWEQUIPMENT.COM

- COMPANY PROPRIETARY NOTE -

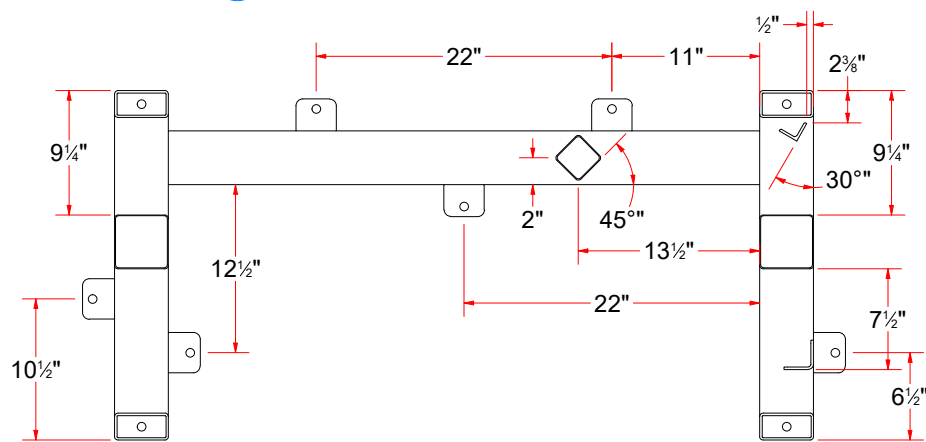
THIS DRAWING AND ITS DESIGNS ARE PROPERTY OF AVW EQUIPMENT CO. & IT IS NOT TO BE USED OR REPRODUCED WITHOUT THE PERMISSION FROM AVW CO.

DRAWN BY	Ljubomir	CUSTOMER: Tommy's Car Wash	
CHECKED BY		PROJECT: Tommy's CW Tire Shine	
QTY		DESCRIPTION: Tire Dressing Frame Assembly [Passenger]	
RELEASE DATE	7/13/2021	PART NUMBER: TB3BB	REV#
DIMENSION ARE IN INCHES & PROVIDED PRIOR TO SURFACE TREATMENTS, UNLESS NOTED.		SIZE A	EST WEIGHT:
			SHEET 36 of 42

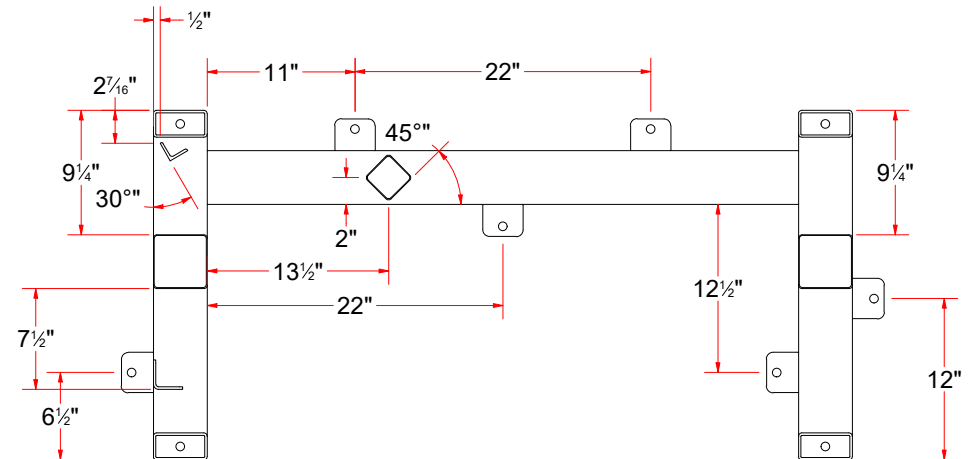
PATH: L:\Libraries\Productivity\Tire Washer\Tire Shine Frame Assembly\TB3BB - Tire Shine Frame Assembly [Passenger].iam



Parts List		
ITEM	QTY	DESCRIPTION
1	1	L-profile 1 1/2 x 1 1/2 x 3/16
2	1	Plate #3/16" x 4 1/16" x 9" LG.
3	6	Plate #5/16" x 2 3/8" x 3"
4	2	Sq. Tube [7 Ga] 4"x 14"LG.
5	2	SS Sheet Metal #18Ga xSQ3 7/8"
6	1	Sq.Tubing [7 Ga.] 2-1/2" x 12" LG
7	2	Rct.Tubing [7 Ga.] 2" x 4" x 26" LG
8	1	Rct.Tubing [7 Ga.] 2" x 4" x 44" LG
9	1	Sheet Metal #18Ga. x 2 3/8" x 2 3/8"



TB3ABA - Tire Shine Frame [Driver]



TB3BBA - Tire Shine Frame [Passenger]



AVW EQUIPMENT CO., INC.
105 S. 9TH AVENUE
MAYWOOD, IL 60153
Tel: 708-343-7738 Fax: 708-343-9065
WWW.AVWEQUIPMENT.COM

- COMPANY PROPRIETARY NOTE -

THIS DRAWING AND ITS DESIGNS ARE PROPERTY OF AVW EQUIPMENT CO. & IT IS NOT TO BE USED OR REPRODUCED WITHOUT THE PERMISSION FROM AVW CO.

DRAWN BY

Ljubomir

CUSTOMER: Tommy's Car Wash

CHECKED BY

PROJECT: Tommy's CW Tire Shine

QTY

DESCRIPTION: Tire Shine Frame [Driver]

RELEASE DATE

7/13/2021

PART NUMBER: TB3ABA

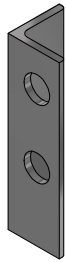
REV#

DIMENSION ARE IN INCHES & PROVIDED PRIOR TO SURFACE TREATMENTS, UNLESS NOTED.

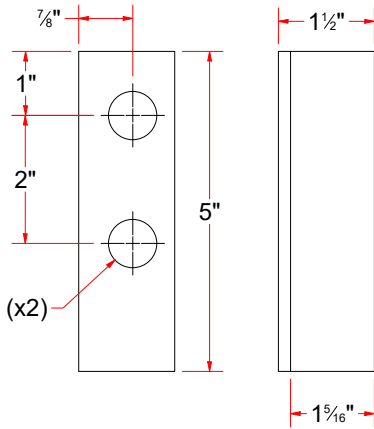
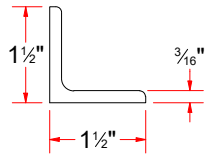
SIZE
A

EST WEIGHT:

SHEET 37 of 42



L-profile 1 1/2 x 1 1/2 x 3/16



Ø 3/4" THRU (x2)

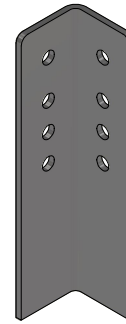
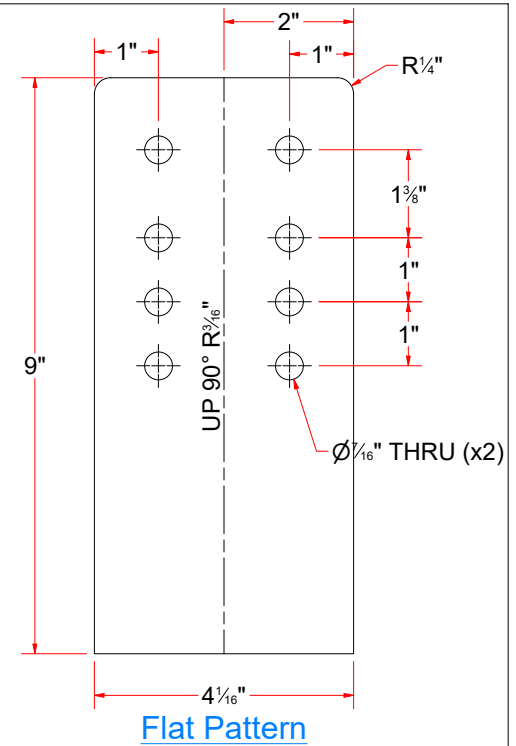


Plate #3/16" x 4 1/16" x 9" LG.



Flat Pattern

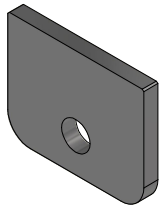
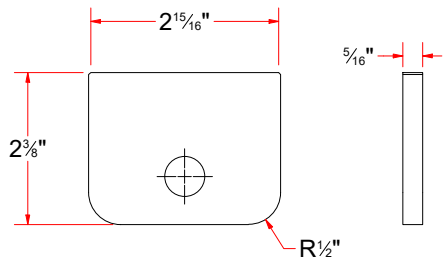
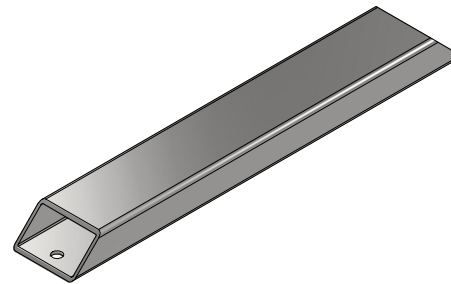


Plate #5/16" x 2 3/8" x 3"

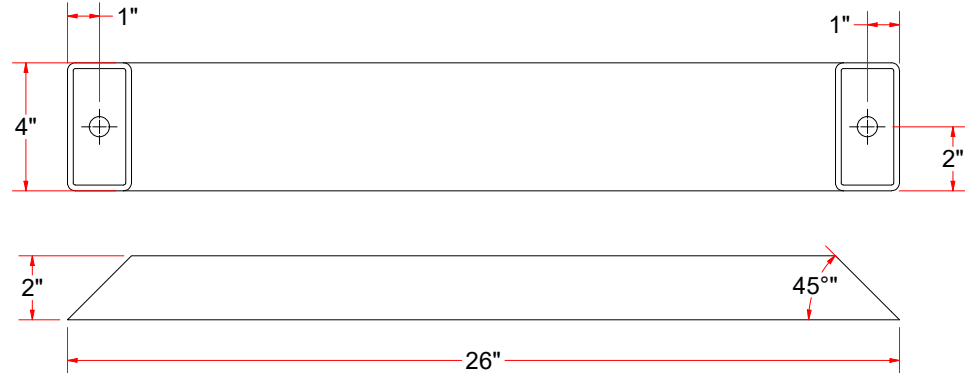


Front

Side



Rct.Tubing [7 Ga.] 2" x 4" x 26" LG



AVW EQUIPMENT CO., INC.
105 S. 9TH AVENUE
MAYWOOD, IL 60153
Tel: 708-343-7738 Fax: 708-343-9065
WWW.AVWEQUIPMENT.COM

- COMPANY PROPRIETARY NOTE -

THIS DRAWING AND ITS DESIGNS ARE PROPERTY OF AVW EQUIPMENT CO. & IT IS NOT TO BE USED OR REPRODUCED WITHOUT THE PERMISSION FROM AVW CO.

DRAWN BY

Ljubomir

CUSTOMER: Tommy's Car Wash

CHECKED BY

PROJECT: Tommy's CW Tire Shine

QTY

DESCRIPTION: L-profile 1 1/2 x 1 1/2 x 3/16

RELEASE DATE

7/13/2021

PART NUMBER: TB3ABAC

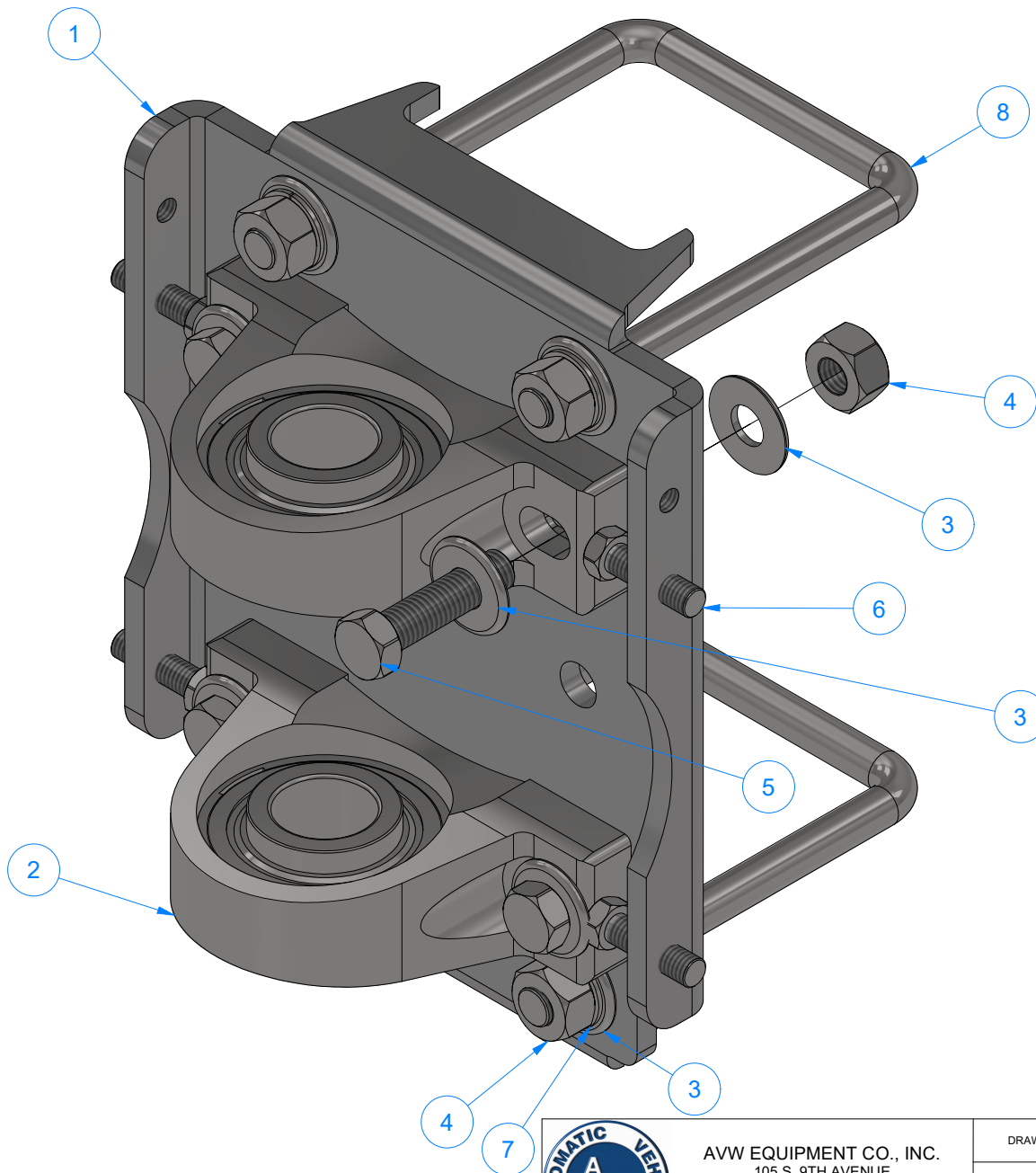
REV#

DIMENSION ARE IN INCHES & PROVIDED PRIOR TO SURFACE TREATMENTS, UNLESS NOTED.

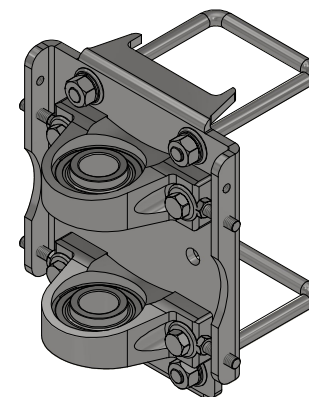
SIZE A

EST WEIGHT:

SHEET 38 of 42



Parts List		
ITEM	QTY	DESCRIPTION
1	1	Empty Rocker Arm Mount Plate 13 9/16 x 10
2	2	1-1/4" Pillow Block
3	12	1/2" Flat Washer
4	8	1/2-13 Hex Nut
5	4	1/2"-13 x 2" L Hex Screw
6	4	3/8" - 16 x 1 1/4" UNC Hex Screw
7	4	1/2" Split Lock Washer
8	2	Square U Bolt D 1/2" x 4" x 7 1/2" LG



TB3ABD - Arm Mount Plate Assembly



AVW EQUIPMENT CO., INC.
105 S. 9TH AVENUE
MAYWOOD, IL 60153
Tel: 708-343-7738 Fax: 708-343-9065
WWW.AVWEQUIPMENT.COM

- COMPANY PROPRIETARY NOTE -

THIS DRAWING AND ITS DESIGNS ARE PROPERTY OF AVW EQUIPMENT CO. & IT IS NOT TO BE USED OR REPRODUCED WITHOUT THE PERMISSION FROM AVW CO.

DRAWN BY

Ljubomir

CUSTOMER: Tommy's Car Wash

CHECKED BY

PROJECT: Tommy's CW Tire Shine

QTY

DESCRIPTION: Arm Mount Plate Assembly

RELEASE DATE

7/13/2021

PART NUMBER: TB3ABD

REV#

DIMENSION ARE IN INCHES & PROVIDED PRIOR TO SURFACE TREATMENTS, UNLESS NOTED.

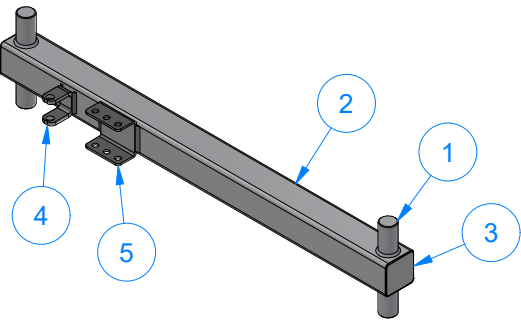
SIZE
A

EST WEIGHT:

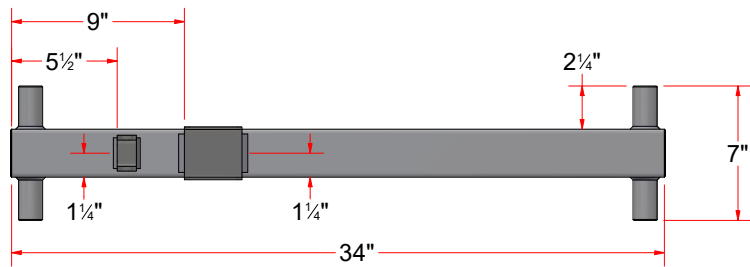
SHEET 39 of 42

PATH: L:\Libraries\Productivity\Tire Washer\Tire Shine Frame Assembly\Parts\TB3ABD - Tire Shine Arm Mount Assembly.iam

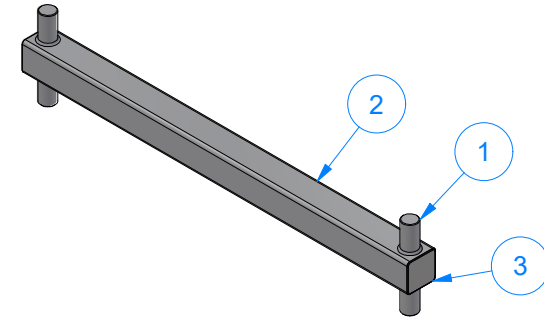
Parts List		
ITEM	QTY	DESCRIPTION
1	2	Round Bar 1 1/4" O.D. x 7" LG.
2	1	Sq. Tube 2-1/2" x 34"LG
3	2	Sheet Metal #18Ga. x 2 3/8" x 2 3/8"
4	1	Mount, for air cylinder
5	1	Shock Absorber Bracket



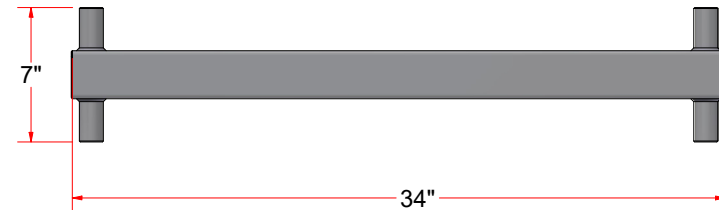
Long Tire Shine Arm-W/ Brackets



Parts List		
ITEM	QTY	DESCRIPTION
1	2	Round Bar 1 1/4" O.D. x 7" LG.
2	1	Sq. Tube 2-1/2" x 34"LG
3	2	Sheet Metal #18Ga. x 2 3/8" x 2 3/8"



Long Tire Shine Arm-w/o Brackets



AVW EQUIPMENT CO., INC.
105 S. 9TH AVENUE
MAYWOOD, IL 60153
Tel: 708-343-7738 Fax: 708-343-9065
WWW.AVWEQUIPMENT.COM

- COMPANY PROPRIETARY NOTE -

THIS DRAWING AND ITS DESIGNS ARE PROPERTY OF AVW EQUIPMENT CO. & IT IS NOT TO BE USED OR REPRODUCED WITHOUT THE PERMISSION FROM AVW CO.

DRAWN BY

Ljubomir

CUSTOMER: Tommy's Car Wash

CHECKED BY

PROJECT: Tommy's CW Tire Shine

QTY

DESCRIPTION: Long Tire Shine Arm-W/ Brackets

RELEASE DATE

7/13/2021

PART NUMBER: TB3ABB

REV#

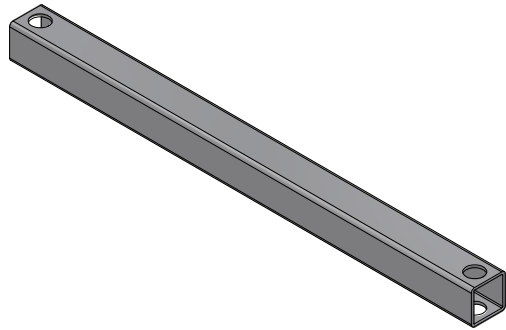
DIMENSION ARE IN INCHES & PROVIDED PRIOR TO SURFACE TREATMENTS, UNLESS NOTED.

SIZE
A

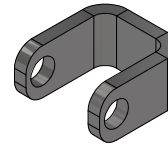
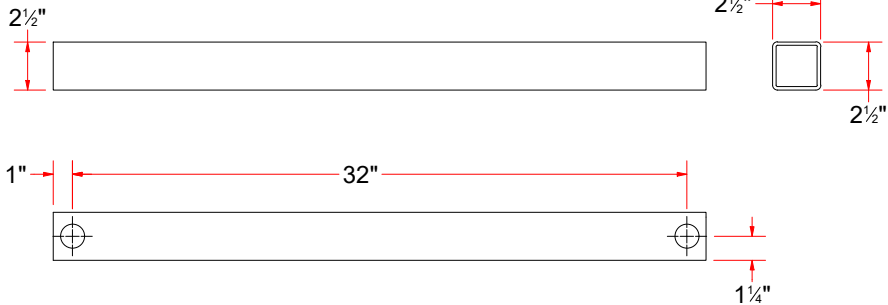
EST WEIGHT:

SHEET 40 of 42

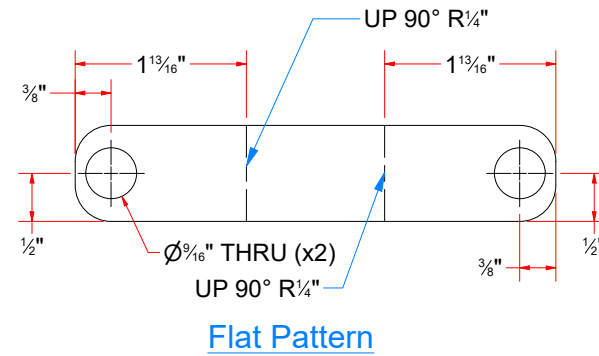
PATH:L:\Libraries\Productivity\Tire Washer\Tire Shine Frame Assembly\Parts\TB3ABB - Long Tire Shine Arm [WITH BRACKETS].iam



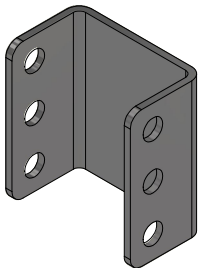
Sq. Tube 2-1/2" x 34"LG



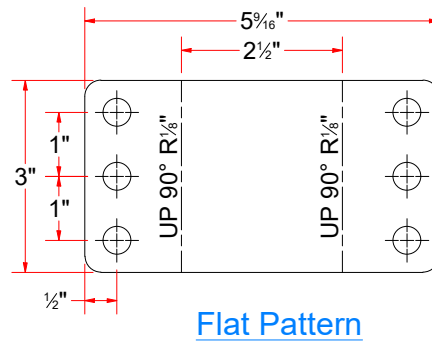
Mount, for air cylinder



Flat Pattern



Shock Absorber Bracket



Flat Pattern



AVW EQUIPMENT CO., INC.
105 S. 9TH AVENUE
MAYWOOD, IL 60153
Tel: 708-343-7738 Fax: 708-343-9065
WWW.AVWEQUIPMENT.COM

- COMPANY PROPRIETARY NOTE -

THIS DRAWING AND ITS DESIGNS ARE PROPERTY OF AVW EQUIPMENT CO. & IT IS NOT TO BE USED OR REPRODUCED WITHOUT THE PERMISSION FROM AVW CO.

DRAWN BY

Ljubomir

CUSTOMER: Tommy's Car Wash

CHECKED BY

PROJECT: Tommy's CW Tire Shine

QTY

DESCRIPTION: Sq. Tube 2-1/2" x 34"LG

RELEASE DATE

7/13/2021

PART NUMBER: TB3ABBA

REV#

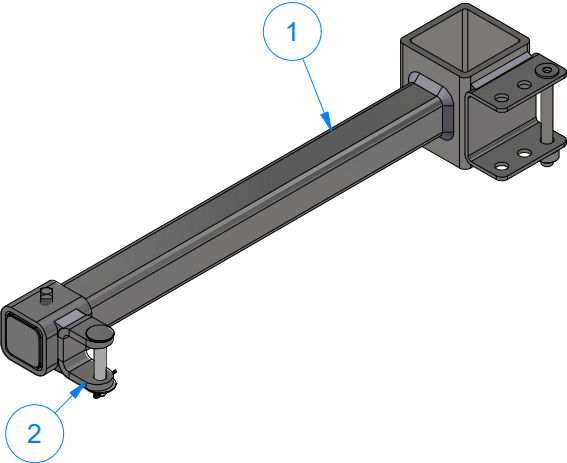
DIMENSION ARE IN INCHES & PROVIDED PRIOR TO SURFACE TREATMENTS, UNLESS NOTED.

SIZE A

EST WEIGHT:

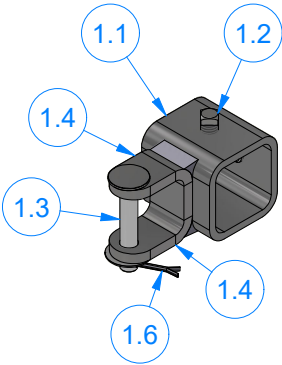
SHEET 41 of 42

TB3ABE - Shock Absorber Mounting Bracket Assembly



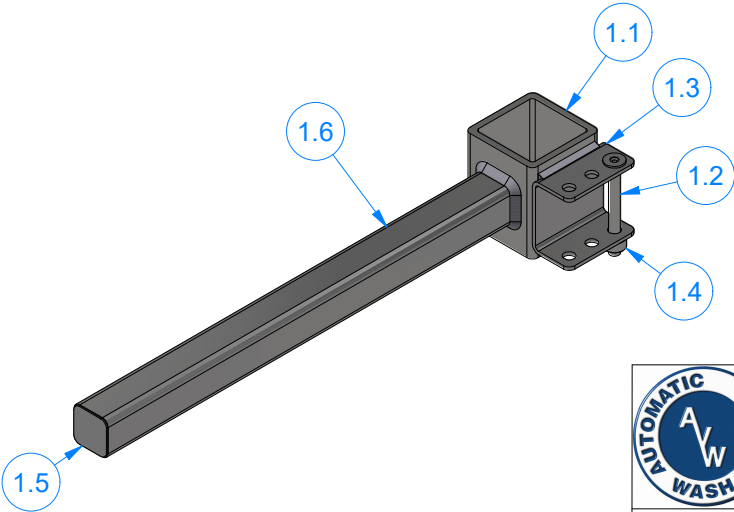
Parts List		
ITEM	QTY	DESCRIPTION
1	1	Shock Absorber Mounting Bracket Arm
2	1	Moveable Rear Shock Mount

Moveable Rear Shock Mount



Parts List		
ITEM	QTY	DESCRIPTION
1.1	1	Sq. Tube #7 Ga x 2"
1.2	2	3/8" - 20 x 0.5" UNC Square Screw
1.3	1	Pin 3/8" x 2 1/4" L
1.4	1	Clevis Bracket #1/4" x 2"
1.5	1	3/8" Flat Washer
1.6	1	Cotter Pin

Shock Absorber Mounting Bracket Arm



Parts List		
ITEM	QTY	DESCRIPTION
1.1	1	Sq. Tube 3" x #1/4" Wall x 3 1/2" LG
1.2	1	Pin 3/8" x 3 1/2" LG
1.3	1	Shock Absorber Bracket
1.4	1	3/8" Set Screw Collar
1.5	1	SS Sheet Metal #18Ga (0.0478 in) x 1 7/16" x 1 7/16"
1.6	1	Sq. Tubing #7 Gauge (0.180 in) x 1 1/2" x 18" LG.



AVW EQUIPMENT CO., INC.
105 S. 9TH AVENUE
MAYWOOD, IL 60153
Tel: 708-343-7738 Fax: 708-343-9065
WWW.AVWEQUIPMENT.COM

- COMPANY PROPRIETARY NOTE -
THIS DRAWING AND ITS DESIGNS ARE PROPERTY OF AVW EQUIPMENT CO. &
IT IS NOT TO BE USED OR REPRODUCED WITHOUT THE PERMISSION FROM AVW CO.

DRAWN BY	Ljubomir	CUSTOMER: Tommy's Car Wash	
CHECKED BY		PROJECT: Tommy's CW Tire Shine	
QTY		DESCRIPTION: Shock Absorber Mounting Bracket Assembly	
RELEASE DATE	7/13/2021	PART NUMBER: TB3ABE	REV#
DIMENSION ARE IN INCHES & PROVIDED PRIOR TO SURFACE TREATMENTS, UNLESS NOTED.		SIZE A	EST WEIGHT:
			SHEET 42 of 42