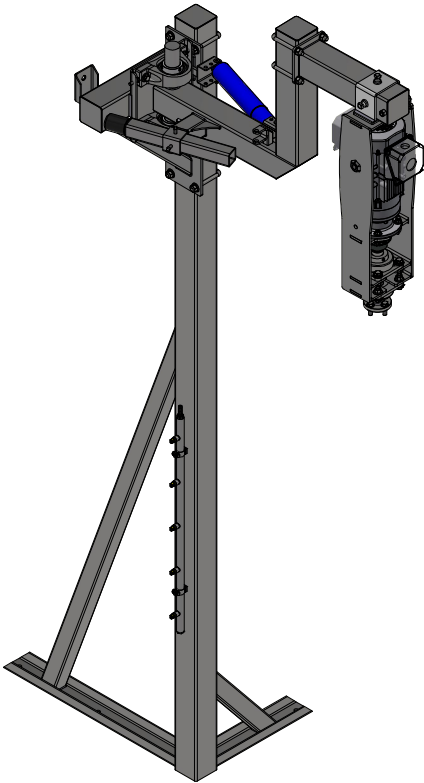
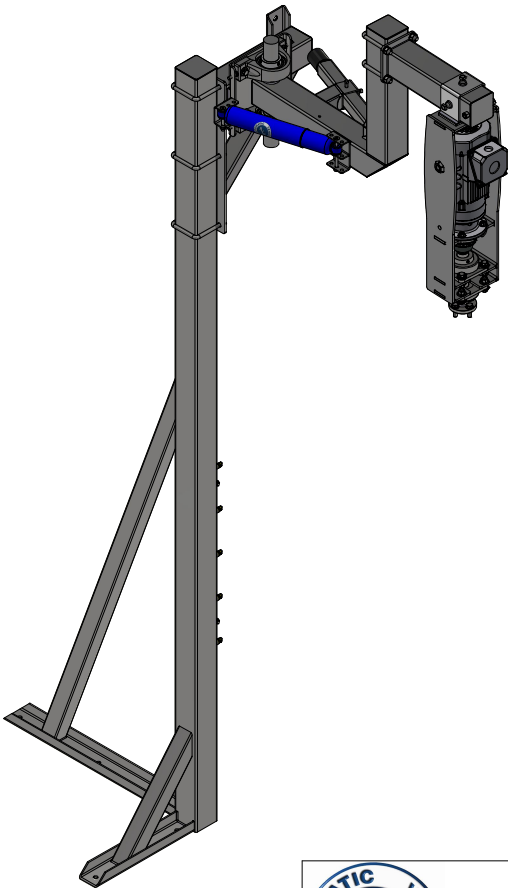


SW2-EL - Side Washer-Free Standing
[EL]

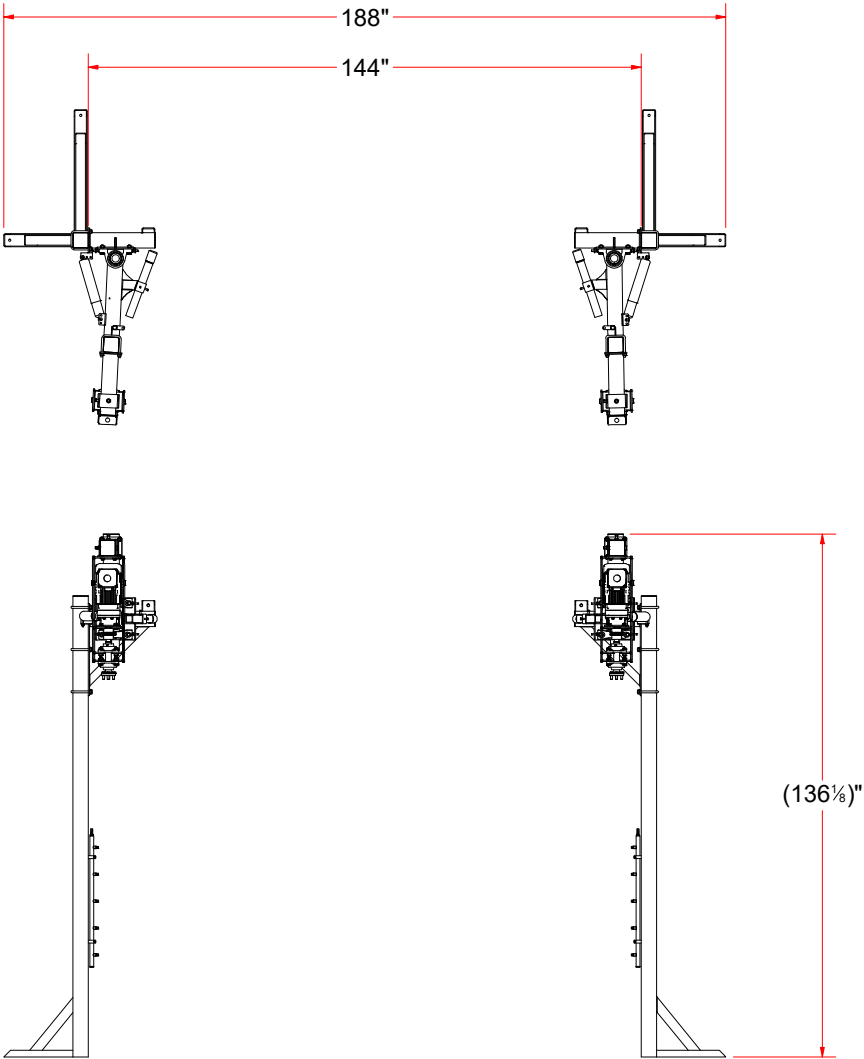


AVW EQUIPMENT CO., INC.
105 S. 9TH AVENUE
MAYWOOD, IL 60153
Tel: 708-343-7738 Fax: 708-343-9065
WWW.AVWEQUIPMENT.COM

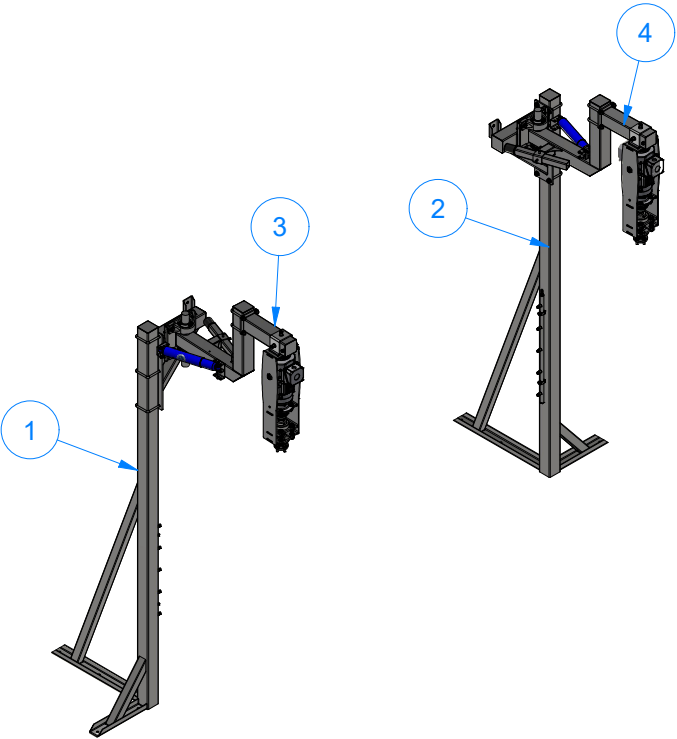
- COMPANY PROPRIETARY NOTE -
THIS DRAWING AND ITS DESIGNS ARE PROPERTY OF AVW EQUIPMENT CO. &
IT IS NOT TO BE USED OR REPRODUCED WITHOUT THE PERMISSION FROM AVW CO.

DRAWN BY	Ljubomir	CUSTOMER: AVW EQUIPMENT CO.	
CHECKED BY		PROJECT: SW2 - SIDE WASHERS	
QTY		DESCRIPTION: Side Washer-Free Standing [EL]	
RELEASE DATE	11/30/2021	PART NUMBER: SW2-EL	REV# 2
DIMENSION ARE IN INCHES & PROVIDED PRIOR TO SURFACE TREATMENTS, UNLESS NOTED.		SIZE A	EST WEIGHT: 859 lbmass
			SHEET 1 of 36

SW2-EL - Side Washer-Free Standing
[EL]



Parts List		
ITEM	QTY	DESCRIPTION
1	1	Passenger Side Leg Assembly
2	1	Driver Side Leg Assembly
3	1	Step-Up Side Washer Arm [Passenger-EL]
4	1	Step-Up Side Washer Arm [Driver-EL]

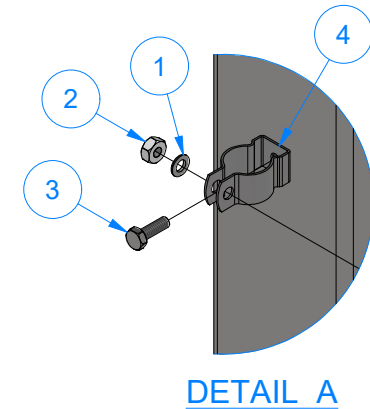
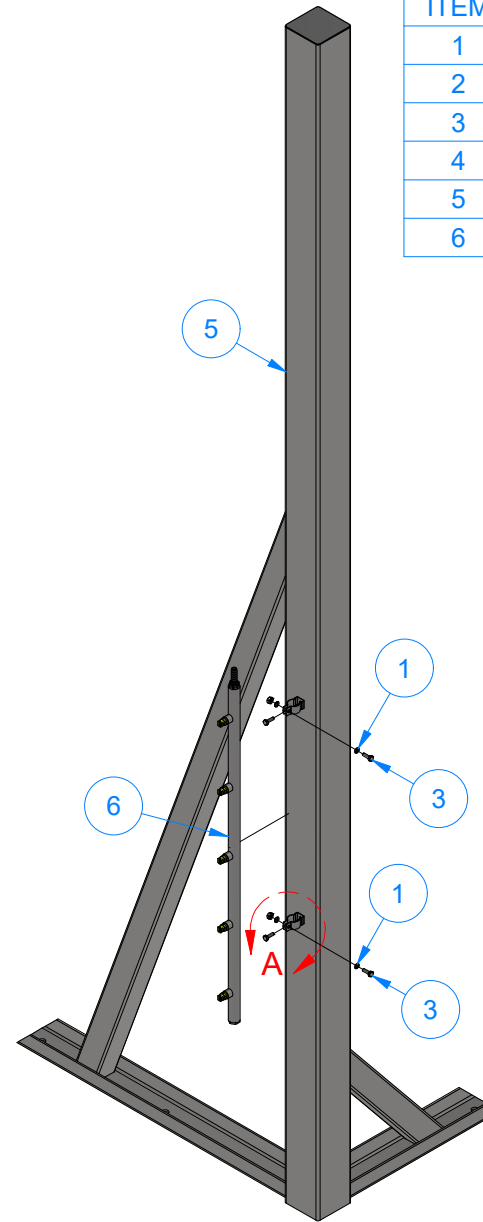
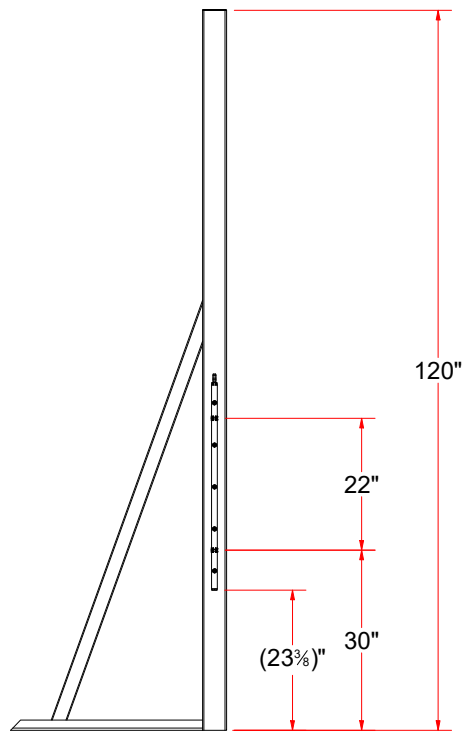
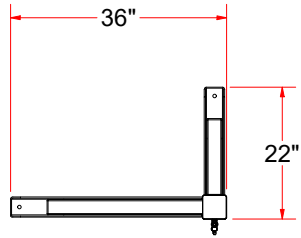


AVW EQUIPMENT CO., INC.
105 S. 9TH AVENUE
MAYWOOD, IL 60153
Tel: 708-343-7738 Fax: 708-343-9065
WWW.AVWEQUIPMENT.COM

- COMPANY PROPRIETARY NOTE -
THIS DRAWING AND ITS DESIGNS ARE PROPERTY OF AVW EQUIPMENT CO. &
IT IS NOT TO BE USED OR REPRODUCED WITHOUT THE PERMISSION FROM AVW CO.

DRAWN BY	Ljubomir	CUSTOMER: AVW EQUIPMENT CO.	
CHECKED BY		PROJECT: SW2 - SIDE WASHERS	
QTY		DESCRIPTION: Side Washer-Free Standing [EL]	
RELEASE DATE	11/30/2021	PART NUMBER: SW2-EL	REV# 2
DIMENSION ARE IN INCHES & PROVIDED PRIOR TO SURFACE TREATMENTS, UNLESS NOTED.		SIZE A	EST WEIGHT: 859 lbmass
			SHEET 2 of 36

SW2A - Driver Side Leg Assembly



Parts List		
ITEM	QTY	DESCRIPTION
1	4	1/4" Washer
2	2	1/4"-20 Hex Nut
3	4	1/4"-20 x 3/4" Hex Screw
4	2	Clamping Hanger
5	1	Driver Side Leg - Weldment
6	1	Side Washer Manifold - Assembly



AVW EQUIPMENT CO., INC.
105 S. 9TH AVENUE
MAYWOOD, IL 60153
Tel: 708-343-7738 Fax: 708-343-9065
WWW.AVWEQUIPMENT.COM

- COMPANY PROPRIETARY NOTE -

THIS DRAWING AND ITS DESIGNS ARE PROPERTY OF AVW EQUIPMENT CO. & IT IS NOT TO BE USED OR REPRODUCED WITHOUT THE PERMISSION FROM AVW CO.

DRAWN BY

Ljubomir

CUSTOMER: AVW EQUIPMENT CO.

CHECKED BY

PROJECT: SW2 - SIDE WASHERS

QTY

DESCRIPTION: Driver Side Leg Assembly

RELEASE DATE

11/30/2021

PART NUMBER: SW2A

REV# 2

DIMENSION ARE IN INCHES & PROVIDED PRIOR TO SURFACE TREATMENTS, UNLESS NOTED.

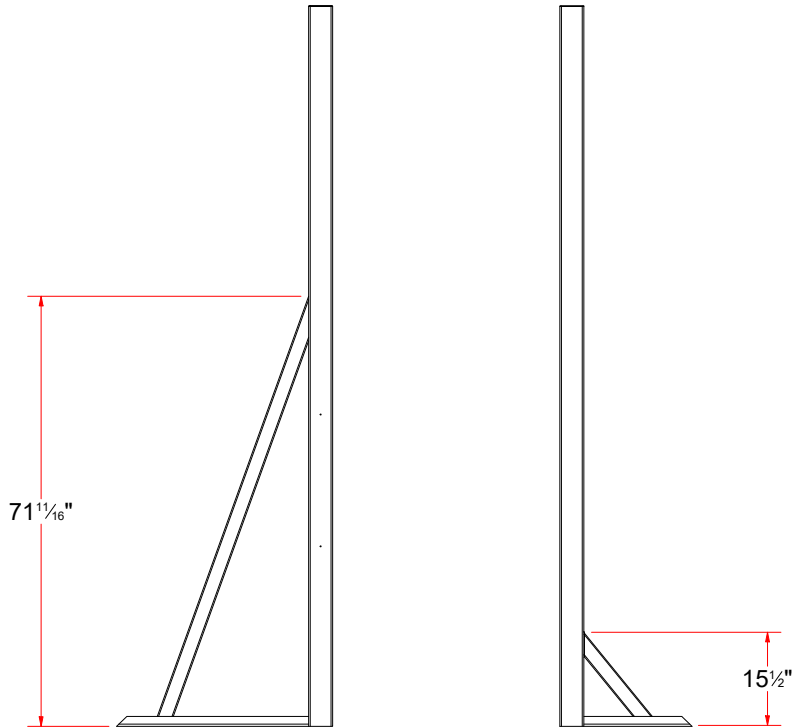
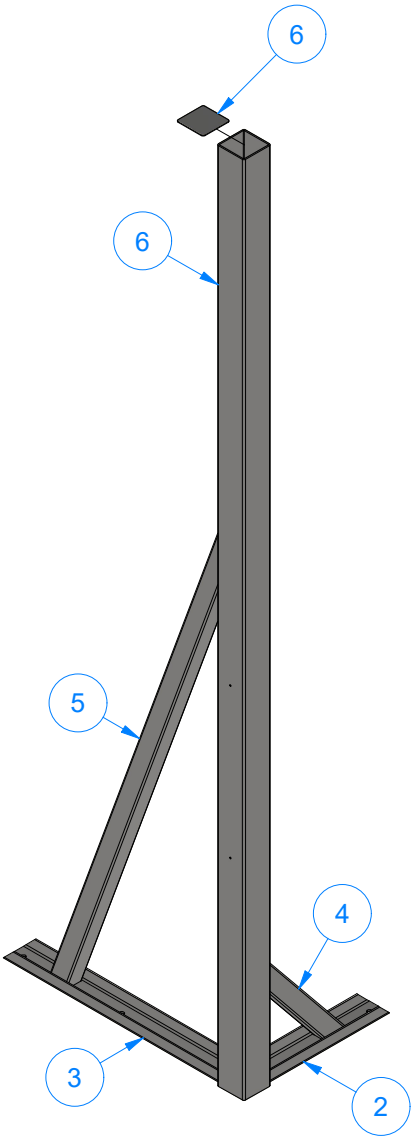
SIZE
A

EST WEIGHT: 158 lbmass

SHEET 3 of 36

PATH: L:\Libraries\Productivity\Legs\Free Standing Side Washer Legs\SW2A - Driver Side Leg\SW2A.iam

SW2AA - Driver Side Leg - Weldment



Parts List		
ITEM	QTY	DESCRIPTION
2	1	Plate #3/16" x 6 1/8" x 18" LG.
3	1	Plate #3/16" x 6 1/8" x 32" LG.
4	1	Sq. Tube #7Ga x 2 1/2" x 2 1/2" x 28 1/2" LG.
5	1	Sq. Tube #7Ga x 2 1/2" x 2 1/2" x 76" LG.
6	1	Sq. Tube #7Ga. x 4" x 4" x 120" LG.
6	1	Sq. SS Plate 14Ga x 3 15/16

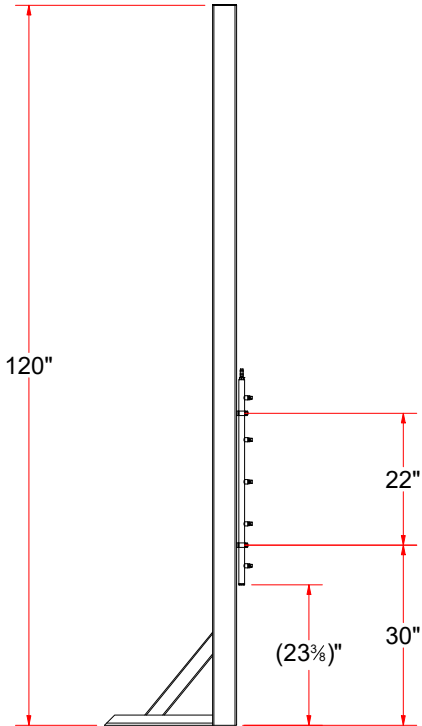
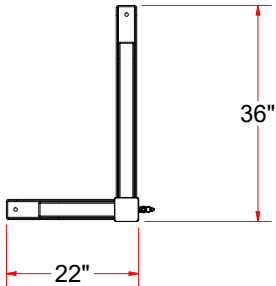


AVW EQUIPMENT CO., INC.
105 S. 9TH AVENUE
MAYWOOD, IL 60153
Tel: 708-343-7738 Fax: 708-343-9065
WWW.AVWEQUIPMENT.COM

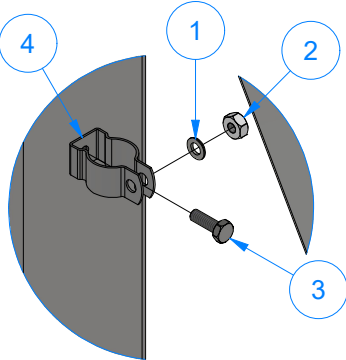
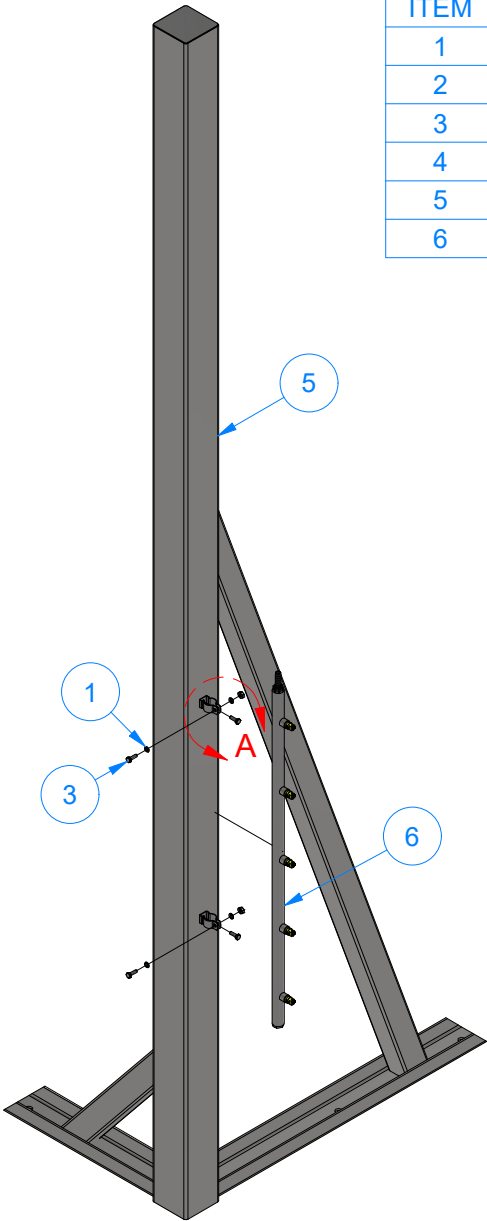
- COMPANY PROPRIETARY NOTE -
THIS DRAWING AND ITS DESIGNS ARE PROPERTY OF AVW EQUIPMENT CO. &
IT IS NOT TO BE USED OR REPRODUCED WITHOUT THE PERMISSION FROM AVW CO.

DRAWN BY	Ljubomir	CUSTOMER: AVW EQUIPMENT CO.	
CHECKED BY		PROJECT: SW2 - SIDE WASHERS	
QTY		DESCRIPTION: Driver Side Leg - Weldment	
RELEASE DATE	11/30/2021	PART NUMBER: SW2AA	REV# 2
DIMENSION ARE IN INCHES & PROVIDED PRIOR TO SURFACE TREATMENTS, UNLESS NOTED.		SIZE A	EST WEIGHT: SHEET 4 of 36

SW2B - Passenger Side Leg Assembly



Parts List		
ITEM	QTY	DESCRIPTION
1	4	1/4" Washer
2	2	1/4"-20 Hex Nut
3	4	1/4"-20 x 3/4" Hex Screw
4	2	Clamping Hanger
5	1	Passenger Side Leg - Weldment
6	1	Side Washer Manifold - Assembly



DETAIL A

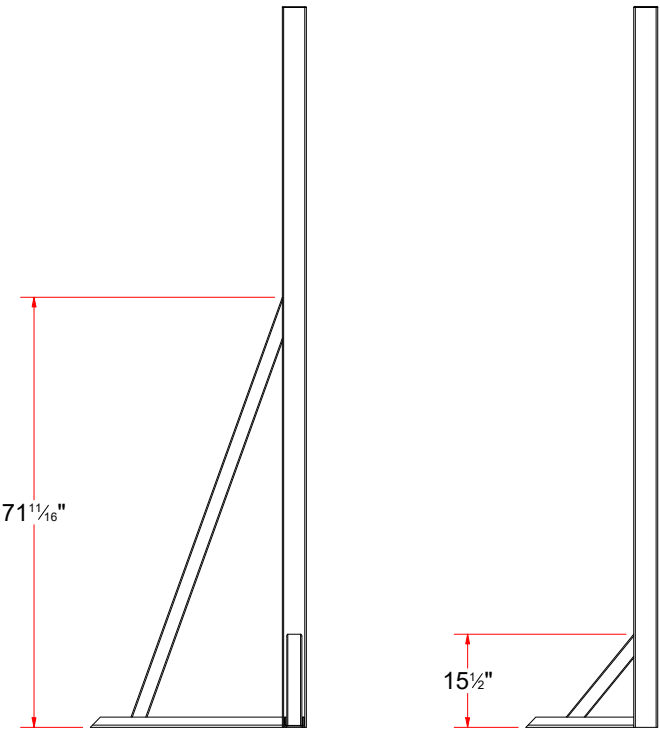
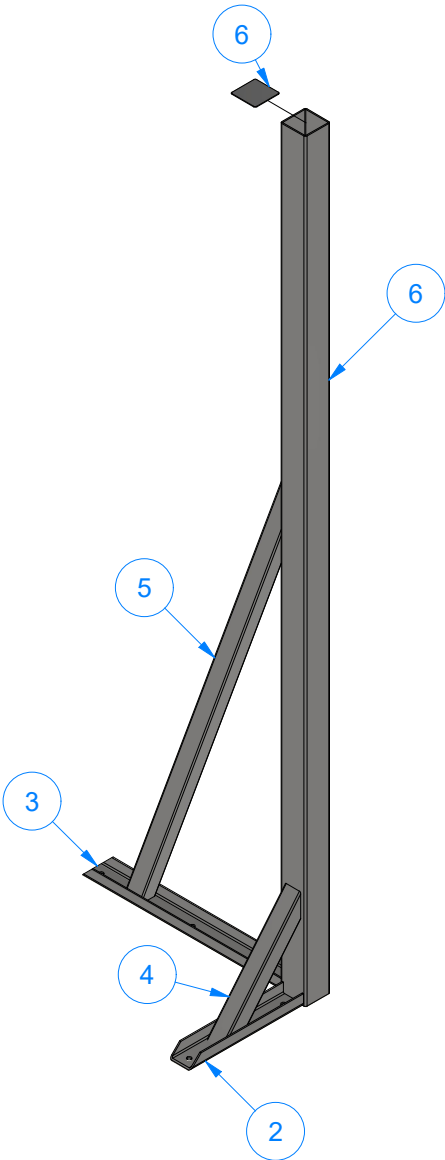


AVW EQUIPMENT CO., INC.
105 S. 9TH AVENUE
MAYWOOD, IL 60153
Tel: 708-343-7738 Fax: 708-343-9065
WWW.AVWEQUIPMENT.COM

- COMPANY PROPRIETARY NOTE -
THIS DRAWING AND ITS DESIGNS ARE PROPERTY OF AVW EQUIPMENT CO. &
IT IS NOT TO BE USED OR REPRODUCED WITHOUT THE PERMISSION FROM AVW CO.

DRAWN BY	Ljubomir	CUSTOMER: AVW EQUIPMENT CO.	
CHECKED BY		PROJECT: SW2 - SIDE WASHERS	
QTY		DESCRIPTION: Passenger Side Leg Assembly	
RELEASE DATE	11/30/2021	PART NUMBER: SW2B	REV# 2
DIMENSION ARE IN INCHES & PROVIDED PRIOR TO SURFACE TREATMENTS, UNLESS NOTED.		SIZE A	EST WEIGHT: 158 lbmass
			SHEET 5 of 36

SW2BA - Passenger Side Leg - Weldment



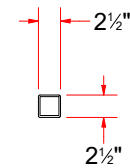
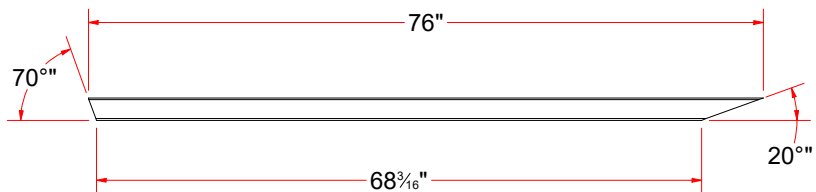
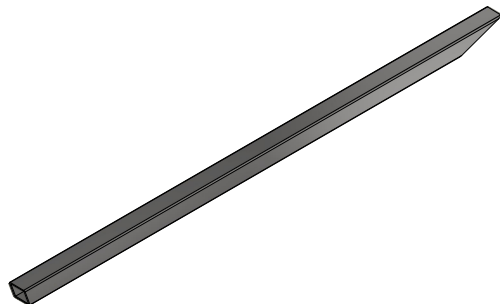
Parts List		
ITEM	QTY	DESCRIPTION
2	1	Plate #3/16" x 6 1/8" x 18" LG.
3	1	Plate #3/16" x 6 1/8" x 32" LG.
4	1	Sq. Tube #7Ga x 2 1/2" x 2 1/2" x 28 1/2" LG.
5	1	Sq. Tube #7Ga x 2 1/2" x 2 1/2" x 76" LG.
6	1	Sq. Tube #7Ga. x 4" x 4" x 120" LG.
6	1	Sq. SS Plate 14Ga x 3 15/16



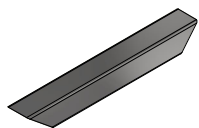
AVW EQUIPMENT CO., INC.
105 S. 9TH AVENUE
MAYWOOD, IL 60153
Tel: 708-343-7738 Fax: 708-343-9065
WWW.AVWEQUIPMENT.COM

- COMPANY PROPRIETARY NOTE -
THIS DRAWING AND ITS DESIGNS ARE PROPERTY OF AVW EQUIPMENT CO. &
IT IS NOT TO BE USED OR REPRODUCED WITHOUT THE PERMISSION FROM AVW CO.

DRAWN BY	Ljubomir	CUSTOMER: AVW EQUIPMENT CO.	
CHECKED BY		PROJECT: SW2 - SIDE WASHERS	
QTY		DESCRIPTION: Passenger Side Leg - Weldment	
RELEASE DATE	11/30/2021	PART NUMBER: SW2BA	REV# 2
DIMENSION ARE IN INCHES & PROVIDED PRIOR TO SURFACE TREATMENTS, UNLESS NOTED.		SIZE A	EST WEIGHT: 154 lbmass
			SHEET 6 of 36



Sq. Tube #7Ga x 2 1/2" x 2 1/2" x 76" LG.



Sq. Tube #7Ga x 2 1/2" x 2 1/2" x 28 1/2" LG.

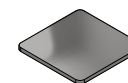
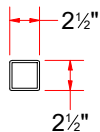
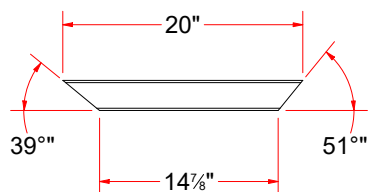


Plate #3/16"x 3 3/4"x 3 3/4"

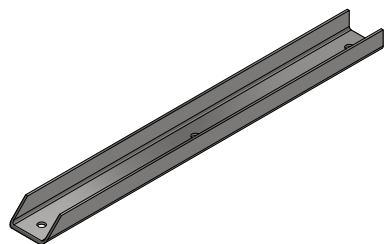
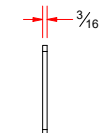
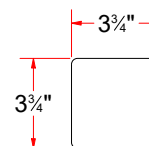
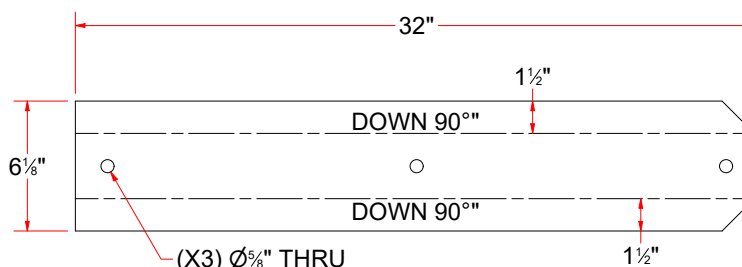
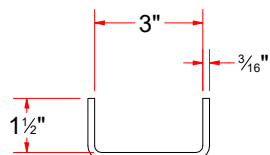


Plate #3/16" x 6 1/8" x 32" LG.



FORMED

FLAT PATTERN



AVW EQUIPMENT CO., INC.
105 S. 9TH AVENUE
MAYWOOD, IL 60153
Tel: 708-343-7738 Fax: 708-343-9065
WWW.AVWEQUIPMENT.COM

- COMPANY PROPRIETARY NOTE -

THIS DRAWING AND ITS DESIGNS ARE PROPERTY OF AVW EQUIPMENT CO. & IT IS NOT TO BE USED OR REPRODUCED WITHOUT THE PERMISSION FROM AVW CO.

DRAWN BY

Ljubomir

CUSTOMER: AVW EQUIPMENT CO.

CHECKED BY

PROJECT: SW2 - SIDE WASHERS

QTY

DESCRIPTION: Sq. Tube #7Ga x 2 1/2" x 2 1/2" x 76" LG.

RELEASE DATE

11/30/2021

PART NUMBER: SW2AAB

REV# 2

DIMENSION ARE IN INCHES & PROVIDED PRIOR TO SURFACE TREATMENTS, UNLESS NOTED.

SIZE A

EST WEIGHT:

SHEET 7 of 36

PATH: L:\Libraries\Productivity\Legs\Free Standing Side Washer Legs\Parts\SW2AAB.ipt

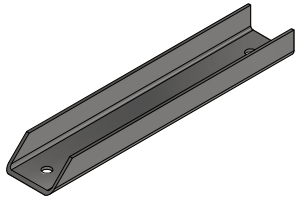
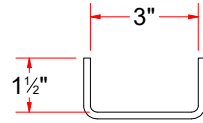
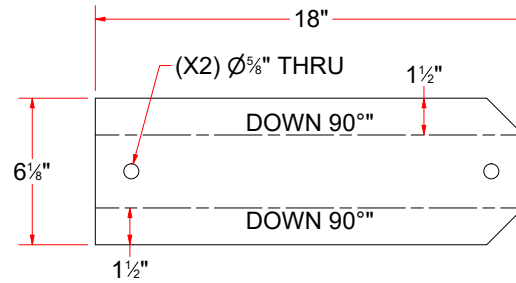


Plate #3/16" x 6 1/8" x 18" LG.



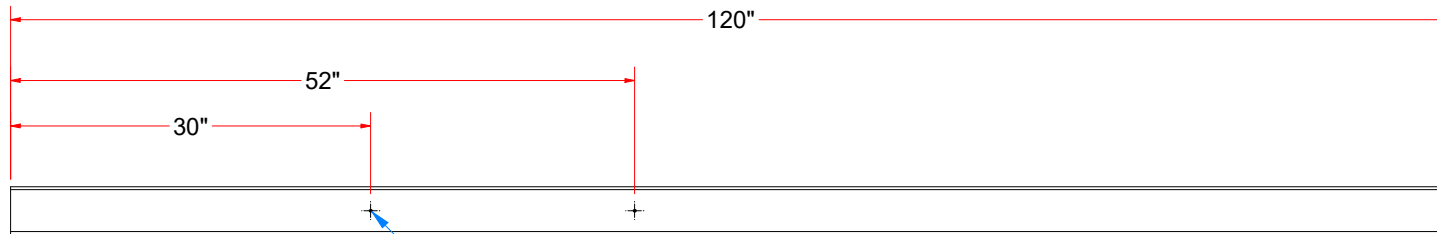
FORMED



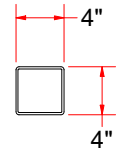
FLAT PATTERN



Sq. Tube #7Ga. x 4" x 4" x 120" LG.



(X2) 1/4-20 UNC - 2B"
THRU ONE WALL



AVW EQUIPMENT CO., INC.
105 S. 9TH AVENUE
MAYWOOD, IL 60153
Tel: 708-343-7738 Fax: 708-343-9065
WWW.AVWEQUIPMENT.COM

- COMPANY PROPRIETARY NOTE -
THIS DRAWING AND ITS DESIGNS ARE PROPERTY OF AVW EQUIPMENT CO. &
IT IS NOT TO BE USED OR REPRODUCED WITHOUT THE PERMISSION FROM AVW CO.

DRAWN BY

Ljubomir

CUSTOMER: AVW EQUIPMENT CO.

CHECKED BY

PROJECT: SW2 - SIDE WASHERS

QTY

DESCRIPTION: Plate #3/16" x 6 1/8" x 18" LG.

RELEASE
DATE

11/30/2021

PART NUMBER: SW2AAE

REV# 2

DIMENSION ARE IN INCHES & PROVIDED PRIOR
TO SURFACE TREATMENTS, UNLESS NOTED.

SIZE
A

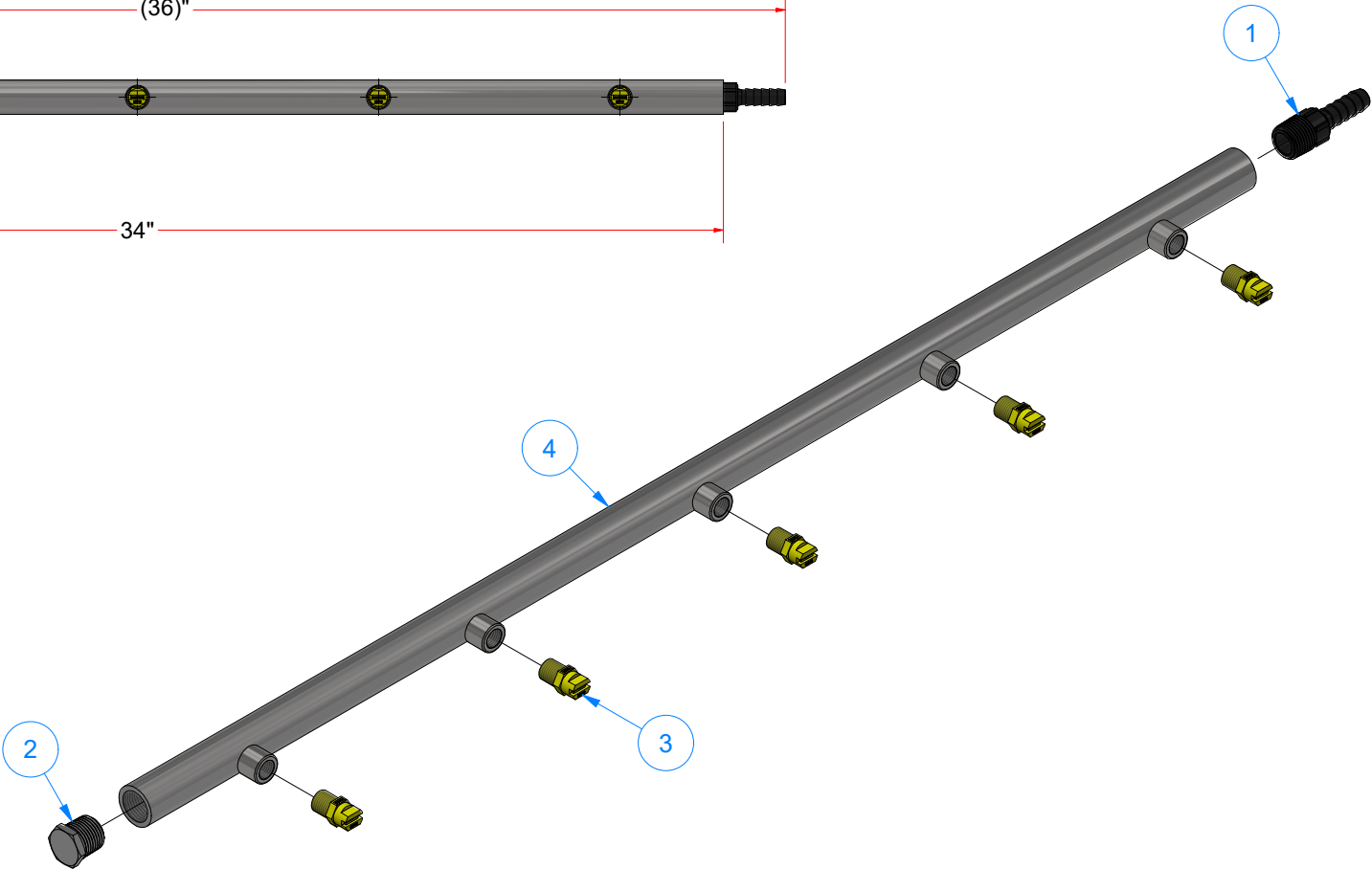
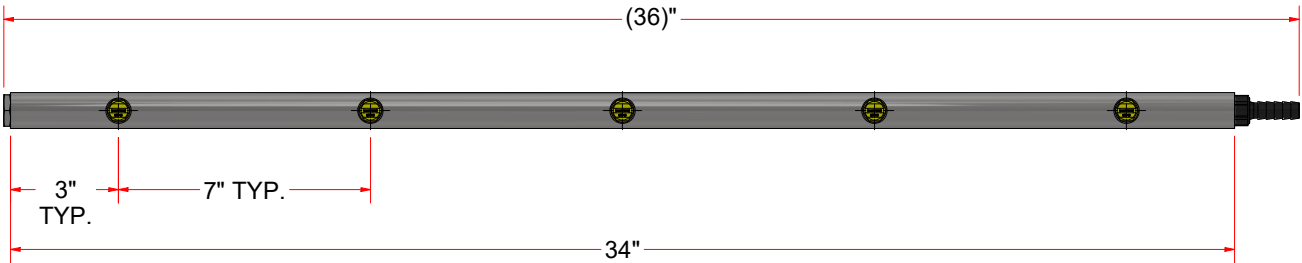
EST WEIGHT:

SHEET 8 of 36

PATH: L:\Libraries\Productivity\Legs\Free Standing Side Washer Legs\Parts\SW2AAE.ipt

WA1LA - Side Washer Manifold - Assembly

Parts List		
ITEM	QTY	DESCRIPTION
1	1	1/2" NPT Male x 1/2" Hose Barb
2	1	1/2" NPT SS Hollow Hex Plug
3	5	Nozzle - Yellow - 1/4" MNPT
4	1	Side Washer Manifold, Weldment

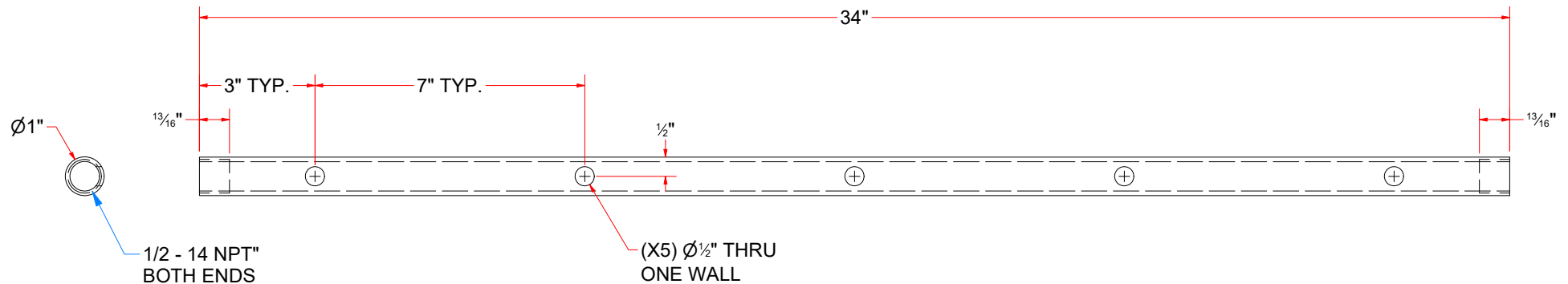
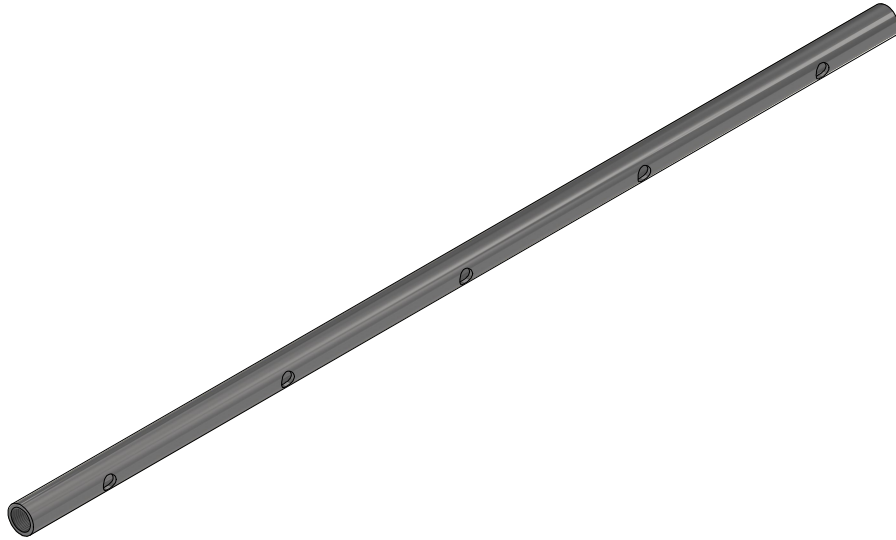


AVW EQUIPMENT CO., INC.
105 S. 9TH AVENUE
MAYWOOD, IL 60153
Tel: 708-343-7738 Fax: 708-343-9065
WWW.AVWEQUIPMENT.COM

- COMPANY PROPRIETARY NOTE -
THIS DRAWING AND ITS DESIGNS ARE PROPERTY OF AVW EQUIPMENT CO. &
IT IS NOT TO BE USED OR REPRODUCED WITHOUT THE PERMISSION FROM AVW CO.

DRAWN BY	Ljubomir	CUSTOMER: AVW EQUIPMENT CO.	
CHECKED BY		PROJECT: SW2 - SIDE WASHERS	
QTY		DESCRIPTION: Side Washer Manifold - Assembly	
RELEASE DATE	11/30/2021	PART NUMBER: WA1LA	REV# 2
DIMENSION ARE IN INCHES & PROVIDED PRIOR TO SURFACE TREATMENTS, UNLESS NOTED.		SIZE A	EST WEIGHT: 4 lbmass
PATH: L:\Libraries\Productivity\Manifolds\WA1LA - Side Water Manifold\WA1LA.jam		SHEET 9 of 36	

WA1LAAA - Round Tubing(0.120 in) WALL x 1" OD x 0.760 in ID x 34" LG.



AVW EQUIPMENT CO., INC.
105 S. 9TH AVENUE
MAYWOOD, IL 60153
Tel: 708-343-7738 Fax: 708-343-9065
WWW.AVWEQUIPMENT.COM

- COMPANY PROPRIETARY NOTE -

THIS DRAWING AND ITS DESIGNS ARE PROPERTY OF AVW EQUIPMENT CO. & IT IS NOT TO BE USED OR REPRODUCED WITHOUT THE PERMISSION FROM AVW CO.

DRAWN BY

Ljubomir

CUSTOMER: AVW EQUIPMENT CO.

CHECKED BY

PROJECT: SW2 - SIDE WASHERS

QTY

DESCRIPTION: Round Tubing(0.120 in) WALL x 1" OD x 0.760 in ID x 34" LG.

RELEASE DATE

11/30/2021

PART NUMBER: WA1LAAA

REV# 2

DIMENSION ARE IN INCHES & PROVIDED PRIOR TO SURFACE TREATMENTS, UNLESS NOTED.

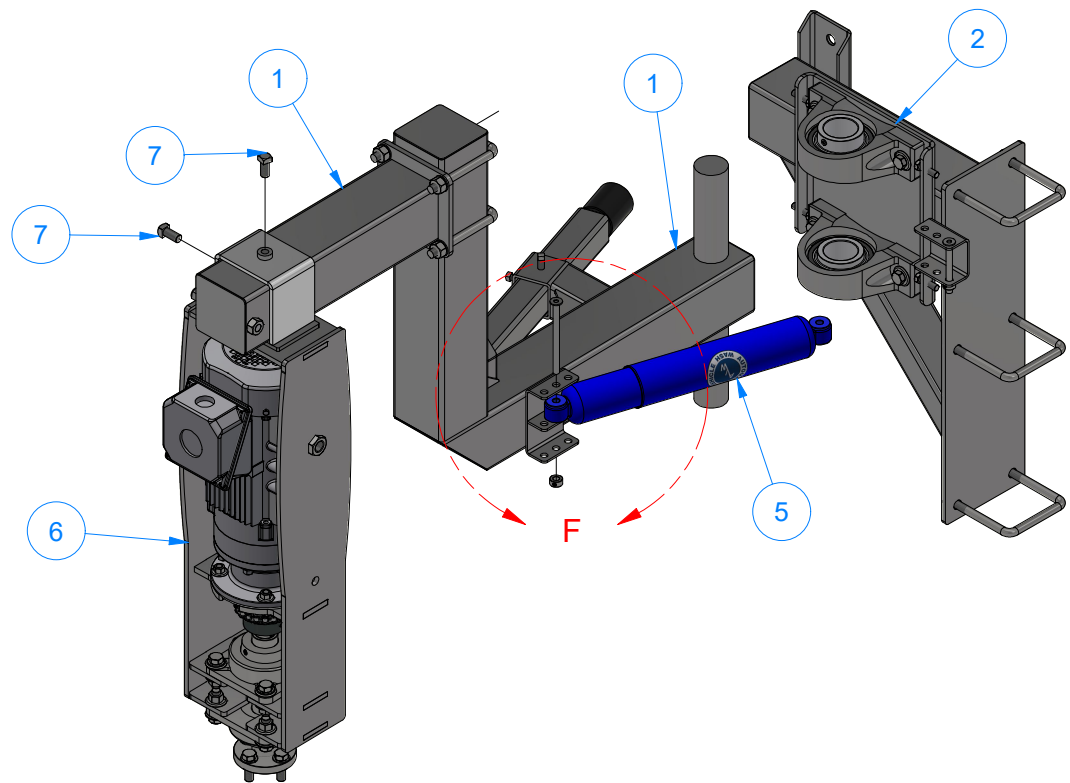
SIZE
A

EST WEIGHT:

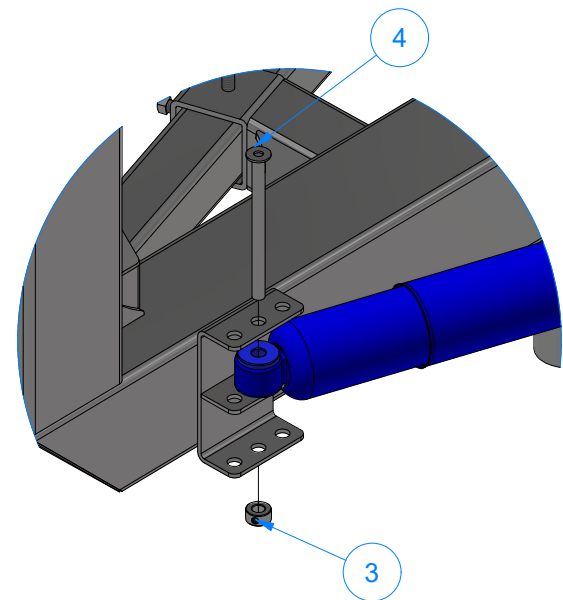
SHEET 10 of 36

PATH:L:\Libraries\Productivity\Manifolds\WA1LA - Side Water Manifold\Parts\WA1LAA - Side Water Manifold_Weldment\Parts\WA1LAAA.ipt

SW2D-EL - Step-Up Side Washer Arm
[Driver-EL]



Parts List		
ITEM	QTY	DESCRIPTION
1	1	Dual setp-Up-Arm [Driver]
2	1	Arm Mount - Driver Side
3	1	3/8" Set Screw Collar
4	1	Pin 3/8" x 5" LG
5	1	Blue Shock Absorber Assembly
6	1	Side Wash Brush Shaft Assembly, Electric Drive
7	2	Square Bolt - 1/2"-13 UNC x 1"



DETAIL F

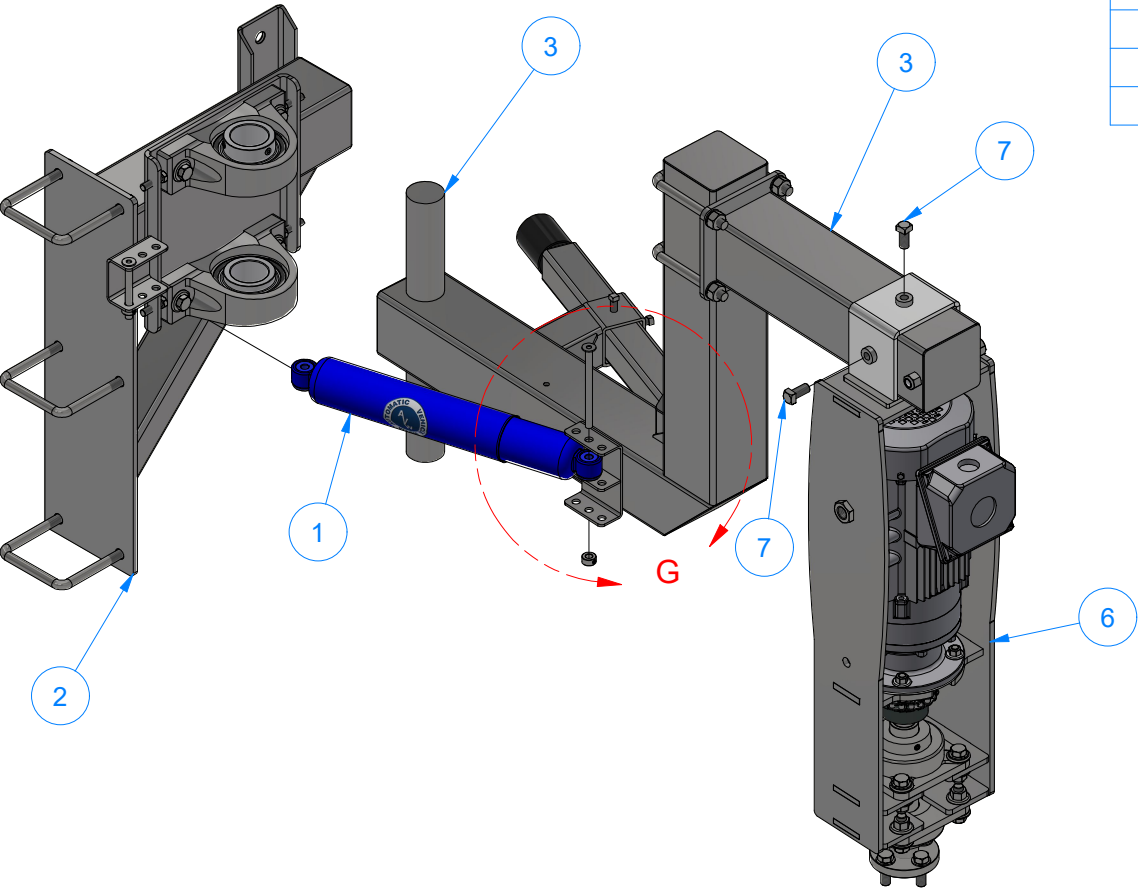


AVW EQUIPMENT CO., INC.
105 S. 9TH AVENUE
MAYWOOD, IL 60153
Tel: 708-343-7738 Fax: 708-343-9065
WWW.AVWEQUIPMENT.COM

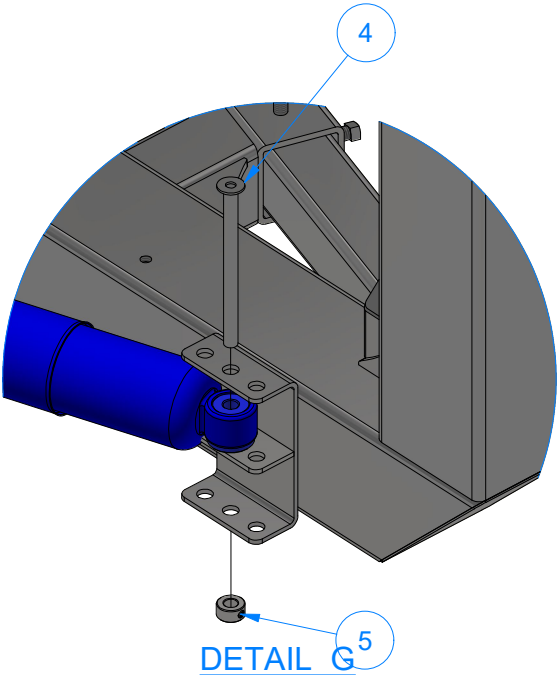
- COMPANY PROPRIETARY NOTE -
THIS DRAWING AND ITS DESIGNS ARE PROPERTY OF AVW EQUIPMENT CO. &
IT IS NOT TO BE USED OR REPRODUCED WITHOUT THE PERMISSION FROM AVW CO.

DRAWN BY	Ljubomir	CUSTOMER: AVW EQUIPMENT CO.		
CHECKED BY		PROJECT: SW2 - SIDE WASHERS		
QTY		DESCRIPTION: Step-Up Side Washer Arm [Driver-EL]		
RELEASE DATE	11/30/2021	PART NUMBER: SW2D-EL		REV# 2
DIMENSION ARE IN INCHES & PROVIDED PRIOR TO SURFACE TREATMENTS, UNLESS NOTED.		SIZE A	EST WEIGHT: 271 lbmass	SHEET 11 of 36

SW2E-EL - Step-Up Side Washer Arm
[Passenger-EL]



Parts List		
ITEM	QTY	DESCRIPTION
1	1	Blue Shock Absorber Assembly
2	1	Arm Mount - Passenger Side
3	1	Dual Step-Up Arm [Passenger]
4	1	Pin 3/8" x 5" LG
5	1	3/8" Set Screw Collar
6	1	Side Wash Brush Shaft Assembly, Electric Drive
7	2	Square Bolt - 1/2"-13 UNC x 1"

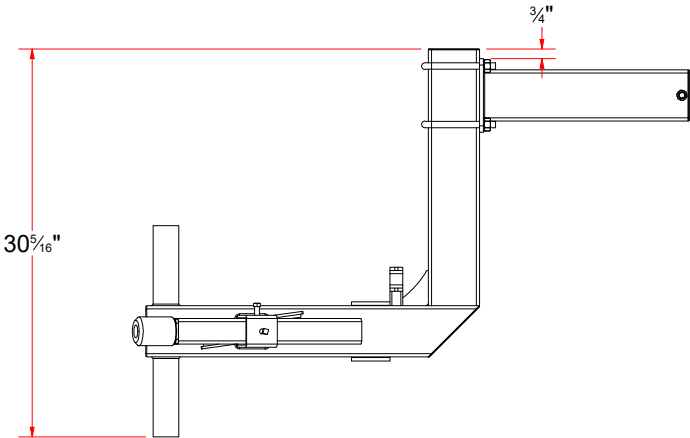
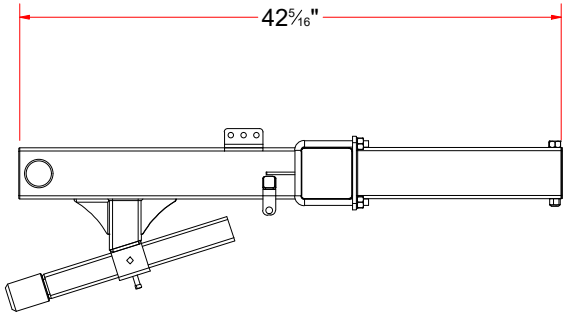


AVW EQUIPMENT CO., INC.
105 S. 9TH AVENUE
MAYWOOD, IL 60153
Tel: 708-343-7738 Fax: 708-343-9065
WWW.AVWEQUIPMENT.COM

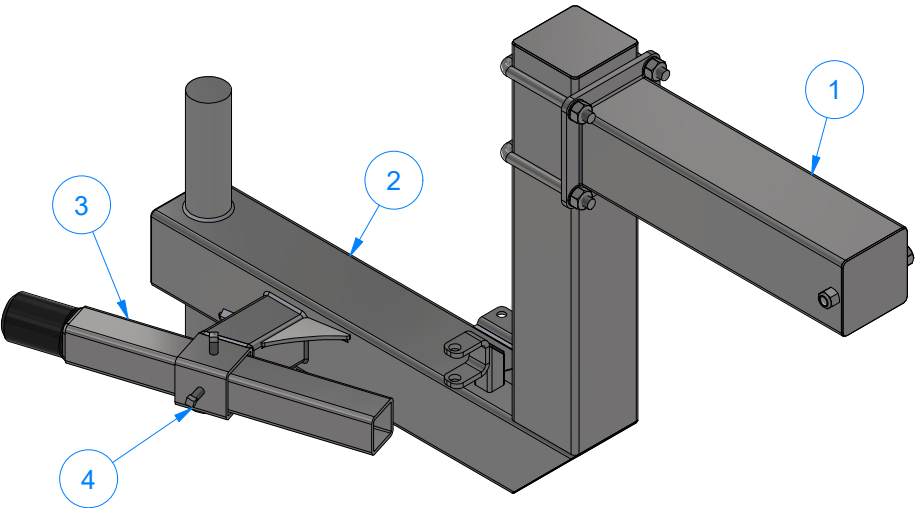
- COMPANY PROPRIETARY NOTE -
THIS DRAWING AND ITS DESIGNS ARE PROPERTY OF AVW EQUIPMENT CO. &
IT IS NOT TO BE USED OR REPRODUCED WITHOUT THE PERMISSION FROM AVW CO.

DRAWN BY	Ljubomir	CUSTOMER: AVW EQUIPMENT CO.		
CHECKED BY		PROJECT: SW2 - SIDE WASHERS		
QTY		DESCRIPTION: Step-Up Side Washer Arm [Passenger-EL]		
RELEASE DATE	11/30/2021	PART NUMBER: SW2E-EL	REV# 2	
DIMENSION ARE IN INCHES & PROVIDED PRIOR TO SURFACE TREATMENTS, UNLESS NOTED.		SIZE A	EST WEIGHT: 271 lbmass	SHEET 12 of 36

SW2DB - DUAL STEP-UP ARM [DRIVER]



Parts List		
ITEM	QTY	DESCRIPTION
1	1	Adjustable Brush Mount
2	1	Dual Step-Up Arm - Weldment [Driver]
3	1	Rubber Bumper Stop Assembly
4	2	Square Bolt - 3/8"-16 x 3/4" L

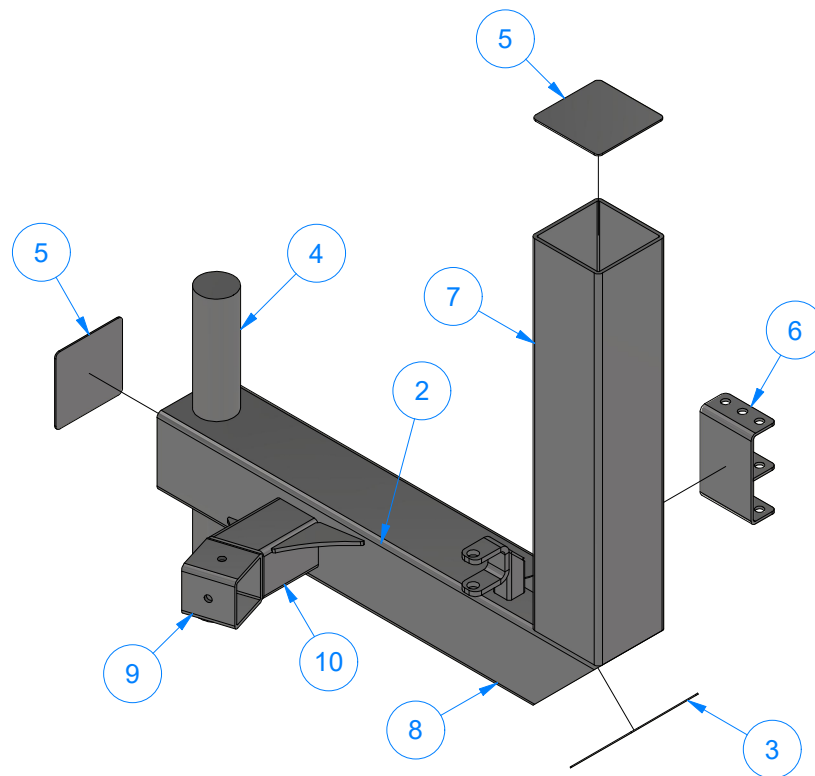
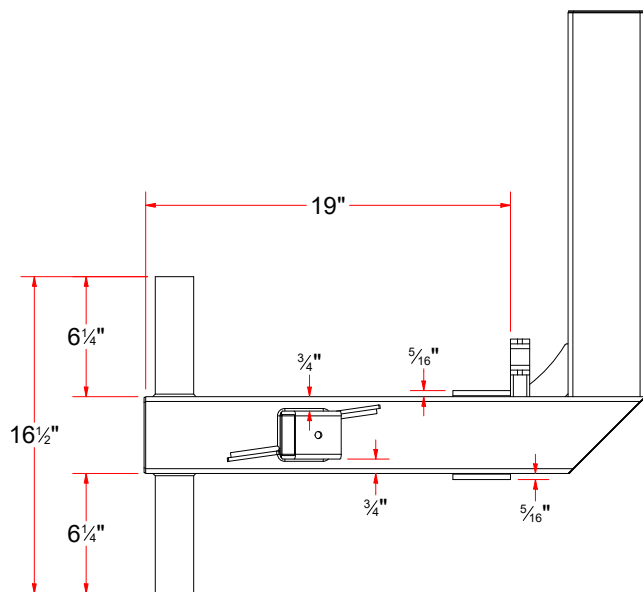
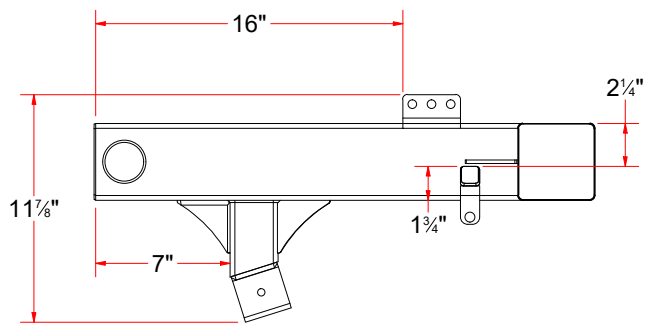


AVW EQUIPMENT CO., INC.
105 S. 9TH AVENUE
MAYWOOD, IL 60153
Tel: 708-343-7738 Fax: 708-343-9065
WWW.AVWEQUIPMENT.COM

- COMPANY PROPRIETARY NOTE -
THIS DRAWING AND ITS DESIGNS ARE PROPERTY OF AVW EQUIPMENT CO. &
IT IS NOT TO BE USED OR REPRODUCED WITHOUT THE PERMISSION FROM AVW CO.

DRAWN BY	Ljubomir	CUSTOMER: AVW EQUIPMENT CO.	
CHECKED BY		PROJECT: SW2 - SIDE WASHERS	
QTY		DESCRIPTION: DUAL STEP-UP ARM [DRIVER]	
RELEASE DATE	11/30/2021	PART NUMBER: SW2DB	REV# 2
DIMENSION ARE IN INCHES & PROVIDED PRIOR TO SURFACE TREATMENTS, UNLESS NOTED.		SIZE A	EST WEIGHT: 130 lbmass
			SHEET 13 of 36

SW2DBA - Dual Step-Up Arm - Weldment [Driver]



Parts List		
ITEM	QTY	DESCRIPTION
2	3	Gusset #3/16" x 2-3_4x2-3_4
3	1	Plate #18Ga x 5-1_2 x 3-7_8
4	1	Shaft D 2" x 16 1/2"
5	2	Sq. SS Plate 14Ga x 3 15/16
6	1	Dual Shock Absorber Bracket
7	1	Sq. Tube 4" x 4" x 20" LG.
8	1	Sq. Tube 4" x 4" x 26" LG.
9	1	Sq. Tube 4" x 4" x 26" LG.
10	1	Sq. Tube 4" x 4" x 26" LG.
17	1	1/2" Clevis Assembly



AVW EQUIPMENT CO., INC.
105 S. 9TH AVENUE
MAYWOOD, IL 60153
Tel: 708-343-7738 Fax: 708-343-9065
WWW.AVWEQUIPMENT.COM

- COMPANY PROPRIETARY NOTE -

THIS DRAWING AND ITS DESIGNS ARE PROPERTY OF AVW EQUIPMENT CO. & IT IS NOT TO BE USED OR REPRODUCED WITHOUT THE PERMISSION FROM AVW CO.

DRAWN BY

Ljubomir

CUSTOMER: AVW EQUIPMENT CO.

CHECKED BY

PROJECT: SW2 - SIDE WASHERS

QTY

DESCRIPTION: Dual Step-Up Arm - Weldment [Driver]

RELEASE DATE

11/30/2021

PART NUMBER: SW2DBA

REV# 2

DIMENSION ARE IN INCHES & PROVIDED PRIOR TO SURFACE TREATMENTS, UNLESS NOTED.

SIZE A

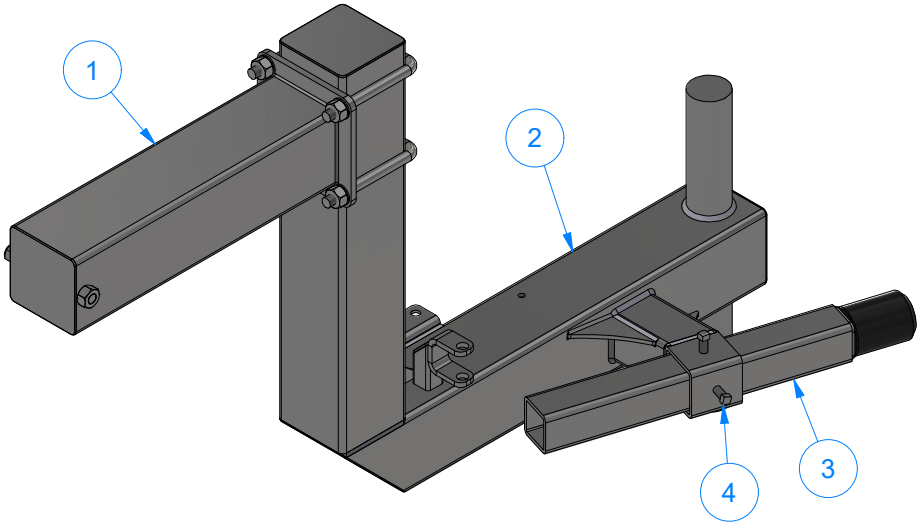
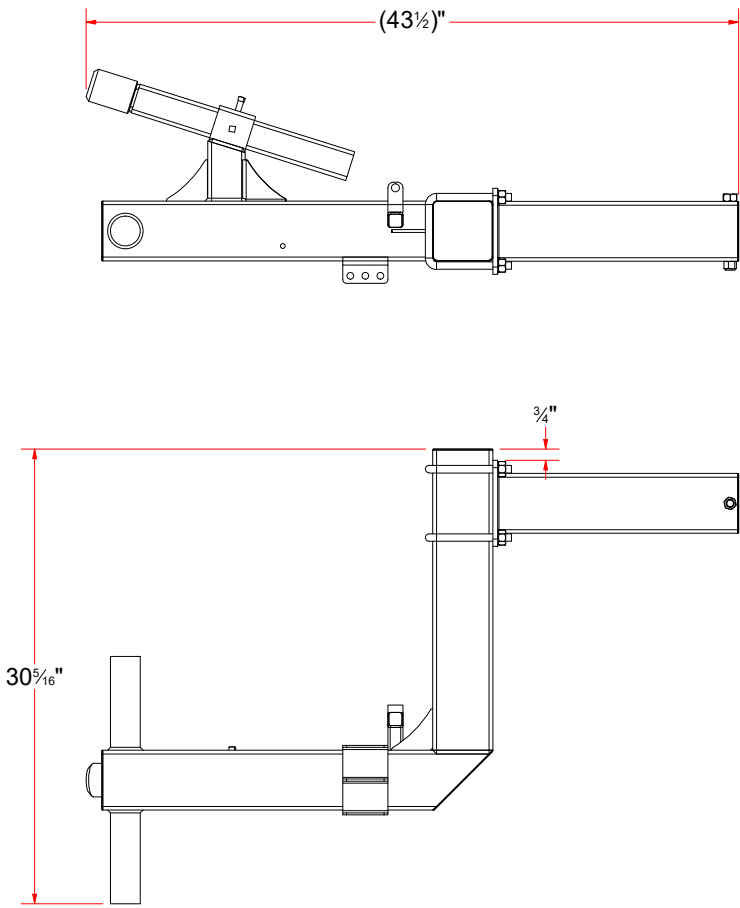
EST WEIGHT: 106 lbmass

SHEET 14 of 36

PATH: L:\Libraries\Productivity\Assembly Arms\Side Washer Arms\SW2 - Side Washer Assemblies\Parts\SW2DB - Dual Step-Up Arm [Driver Side]\Parts\SW2DBA.iam

SW2EB - Dual Step-Up Arm [Passenger]

Parts List		
ITEM	QTY	DESCRIPTION
1	1	Adjustable Brush Mount
2	1	Dual Step-Up Arm - Weldment [Passenger]
3	1	Rubber Bumper Stop Assembly
4	2	Square Bolt - 3/8"-16 x 3/4" L

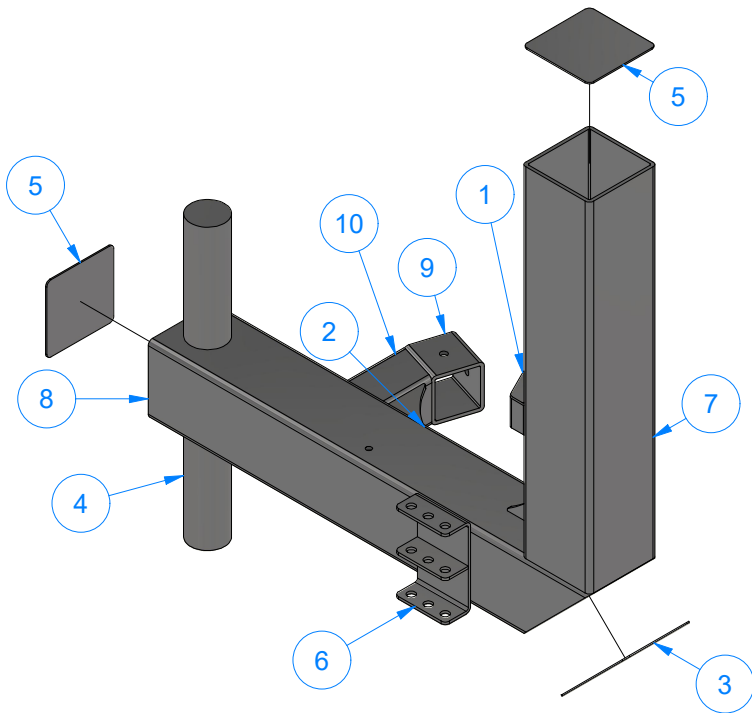
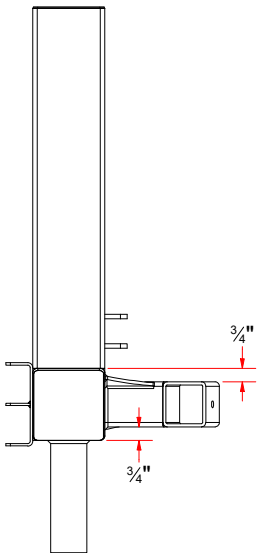
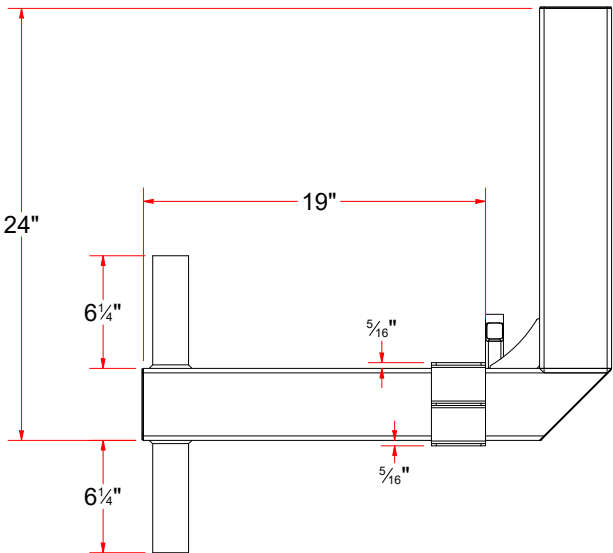
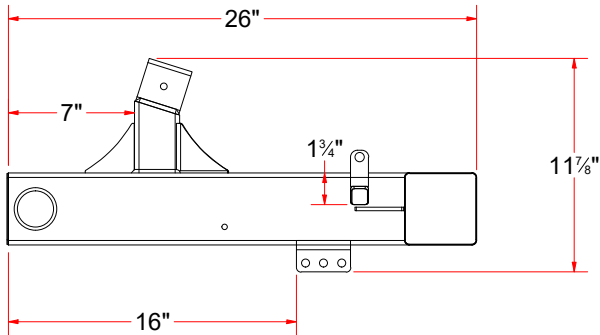


AVW EQUIPMENT CO., INC.
105 S. 9TH AVENUE
MAYWOOD, IL 60153
Tel: 708-343-7738 Fax: 708-343-9065
WWW.AVWEQUIPMENT.COM

- COMPANY PROPRIETARY NOTE -
THIS DRAWING AND ITS DESIGNS ARE PROPERTY OF AVW EQUIPMENT CO. &
IT IS NOT TO BE USED OR REPRODUCED WITHOUT THE PERMISSION FROM AVW CO.

DRAWN BY	Ljubomir	CUSTOMER: AVW EQUIPMENT CO.	
CHECKED BY		PROJECT: SW2 - SIDE WASHERS	
QTY		DESCRIPTION: Dual Step-Up Arm [Passenger]	
RELEASE DATE	11/30/2021	PART NUMBER: SW2EB	REV# 2
DIMENSION ARE IN INCHES & PROVIDED PRIOR TO SURFACE TREATMENTS, UNLESS NOTED.		SIZE A	EST WEIGHT: 109 lbmass
			SHEET 15 of 36

SW2EBA - Dual Step-Up Arm - Weldment [Passenger]



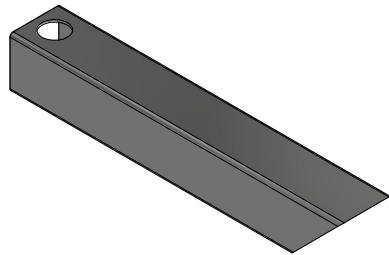
Parts List		
ITEM	QTY	DESCRIPTION
1	1	1/2" Clevis Assembly
2	3	Gusset #3/16" x 2-3_4x2-3_4
3	1	Plate #18Ga x 5-1_2 x 3-7_8
4	1	Shaft D 2" x 16 1/2"
5	2	Sq. SS Plate 14Ga x 3 15/16
6	1	Dual Shock Absorber Bracket
7	1	Sq. Tube 4" x 4" x 20" LG.
8	1	Sq. Tube 4" x 4" x 26" LG.
9	1	Sq.Tubing [7 Ga.] 2-1/2" x 2 1/2" LG.
10	1	Sq.Tubing [7 Ga.] 2-1/2" x 4" LG.



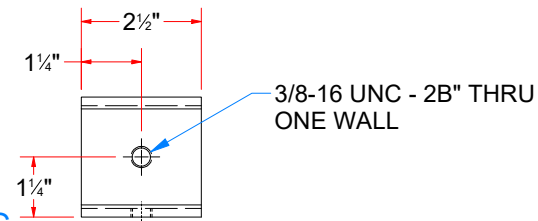
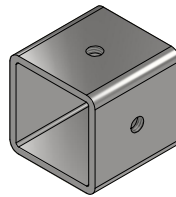
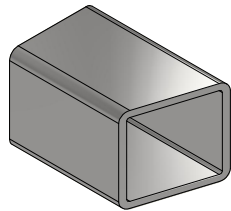
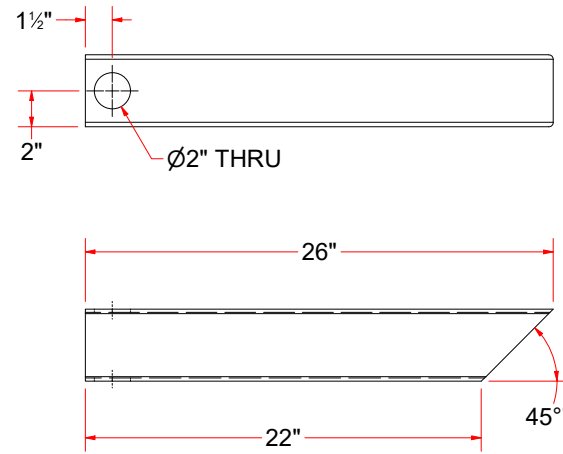
AVW EQUIPMENT CO., INC.
105 S. 9TH AVENUE
MAYWOOD, IL 60153
Tel: 708-343-7738 Fax: 708-343-9065
WWW.AVWEQUIPMENT.COM

- COMPANY PROPRIETARY NOTE -
THIS DRAWING AND ITS DESIGNS ARE PROPERTY OF AVW EQUIPMENT CO. &
IT IS NOT TO BE USED OR REPRODUCED WITHOUT THE PERMISSION FROM AVW CO.

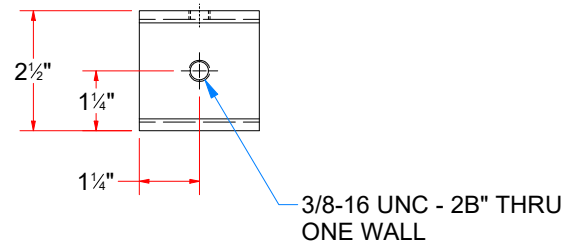
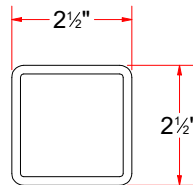
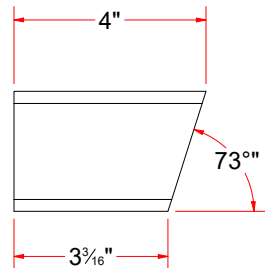
DRAWN BY	Ljubomir	CUSTOMER: AVW EQUIPMENT CO.	
CHECKED BY		PROJECT: SW2 - SIDE WASHERS	
QTY		DESCRIPTION: Dual Step-Up Arm - Weldment [Passenger]	
RELEASE DATE	11/30/2021	PART NUMBER: SW2EBA	REV# 2
DIMENSION ARE IN INCHES & PROVIDED PRIOR TO SURFACE TREATMENTS, UNLESS NOTED.		SIZE A	SHEET 16 of 36
		EST WEIGHT: 106 lbmass	



Sq. Tube 4" x 4" x 26" LG



Sq.Tubing [7 Ga.] 2-1/2" x 2 1/2" LG.



AVW EQUIPMENT CO., INC.
105 S. 9TH AVENUE
MAYWOOD, IL 60153
Tel: 708-343-7738 Fax: 708-343-9065
WWW.AVWEQUIPMENT.COM

- COMPANY PROPRIETARY NOTE -

THIS DRAWING AND ITS DESIGNS ARE PROPERTY OF AVW EQUIPMENT CO. & IT IS NOT TO BE USED OR REPRODUCED WITHOUT THE PERMISSION FROM AVW CO.

DRAWN BY

Ljubomir

CUSTOMER: AVW EQUIPMENT CO.

CHECKED BY

PROJECT: SW2 - SIDE WASHERS

QTY

DESCRIPTION: Sq. Tube 4" x 4" x 26" LG

RELEASE DATE

11/30/2021

PART NUMBER: SWA1EAA-5950

REV# 2

DIMENSION ARE IN INCHES & PROVIDED PRIOR TO SURFACE TREATMENTS, UNLESS NOTED.

SIZE
A

EST WEIGHT:

SHEET 17 of 36

Sq. SS Plate 14Ga x 3 15/16

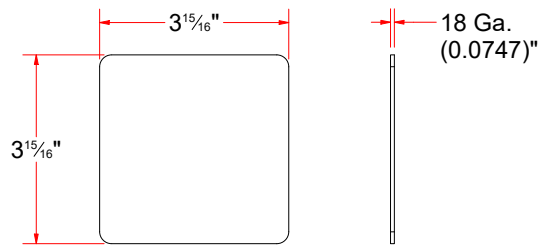
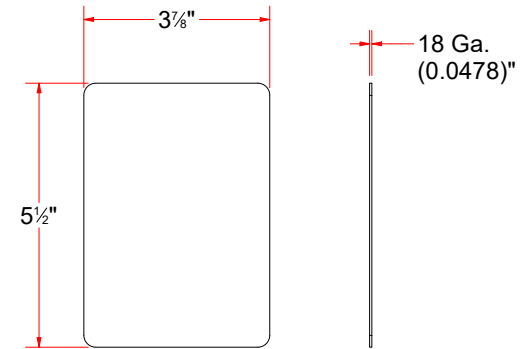
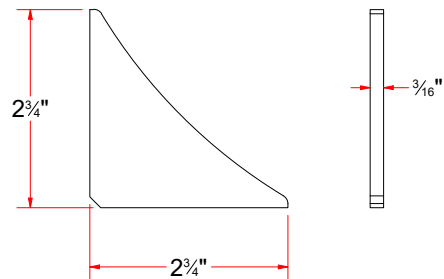


Plate #18Ga x 5-1_2 x 3-7_8



Gusset #3/16" x 2-3_4x2-3_4



AVW EQUIPMENT CO., INC.
105 S. 9TH AVENUE
MAYWOOD, IL 60153
Tel: 708-343-7738 Fax: 708-343-9065
WWW.AVWEQUIPMENT.COM

- COMPANY PROPRIETARY NOTE -

THIS DRAWING AND ITS DESIGNS ARE PROPERTY OF AVW EQUIPMENT CO. & IT IS NOT TO BE USED OR REPRODUCED WITHOUT THE PERMISSION FROM AVW CO.

DRAWN BY

Ljubomir

CUSTOMER: AVW EQUIPMENT CO.

CHECKED BY

PROJECT: SW2 - SIDE WASHERS

QTY

DESCRIPTION: Gusset #3/16" x 2-3_4x2-3_4

RELEASE DATE

11/30/2021

PART NUMBER: GUSSS187X0275X0275

REV# 2

DIMENSION ARE IN INCHES & PROVIDED PRIOR TO SURFACE TREATMENTS, UNLESS NOTED.

SIZE
A

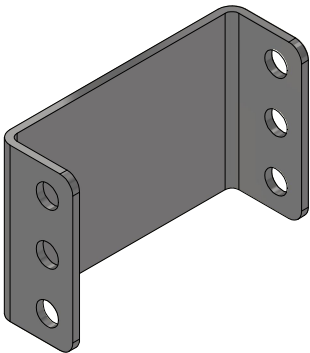
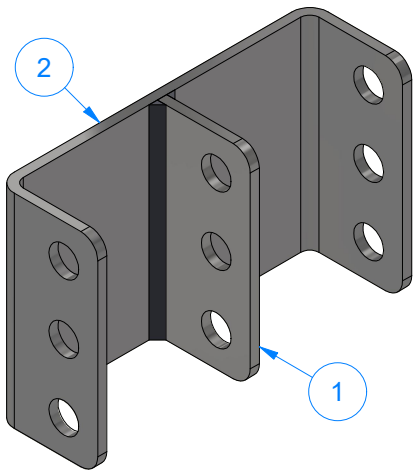
EST WEIGHT:

SHEET 18 of 36

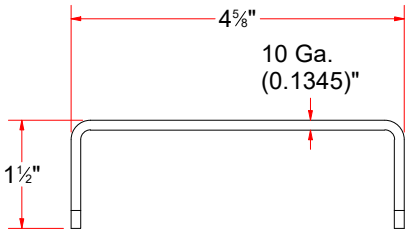
PATH:L:\Libraries\AVW Components\Plates\Gussets\Wrap Arm Rubber Stopper Gusset (2-3_4 x 2-3_4).ipt

SAB1 - Dual Shock Absorber Bracket

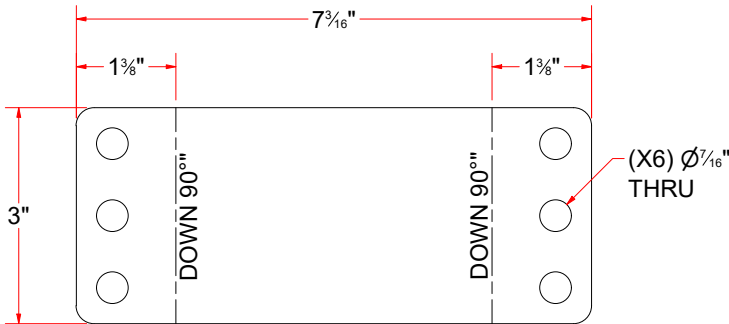
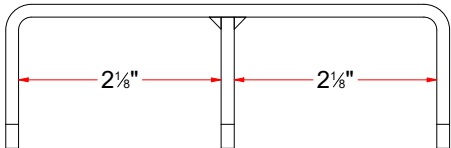
Parts List		
ITEM	QTY	DESCRIPTION
1	1	SS S.M#10Ga x 1 3/8" x 3" LG.
2	1	SS S.M #10Gax 3" x 7 3/16" LG.



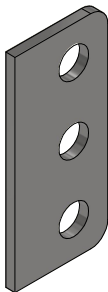
SS S.M #10Gax 3" x 7 3/16" LG.



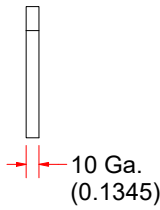
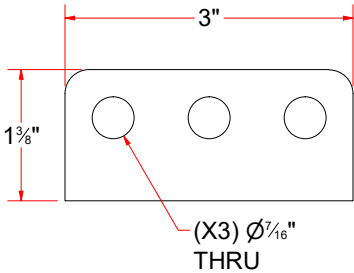
FORMED



FLAT PATTERN



SS S.M#10Ga x 1 3/8" x 3" LG.

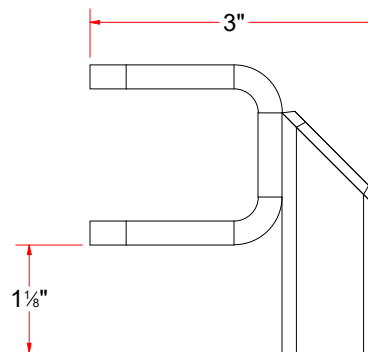
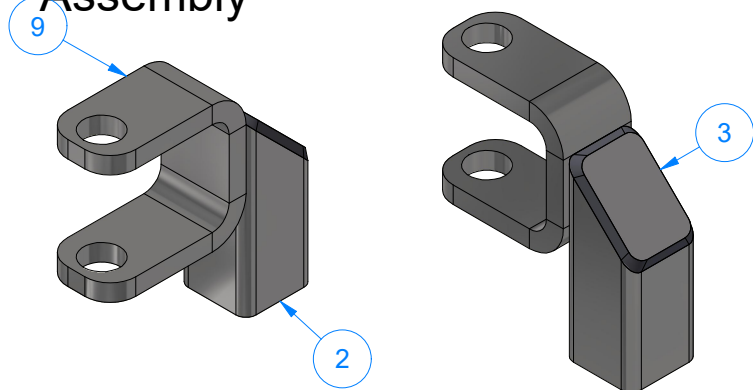


AVW EQUIPMENT CO., INC.
105 S. 9TH AVENUE
MAYWOOD, IL 60153
Tel: 708-343-7738 Fax: 708-343-9065
WWW.AVWEQUIPMENT.COM

- COMPANY PROPRIETARY NOTE -
THIS DRAWING AND ITS DESIGNS ARE PROPERTY OF AVW EQUIPMENT CO. &
IT IS NOT TO BE USED OR REPRODUCED WITHOUT THE PERMISSION FROM AVW CO.

DRAWN BY	Ljubomir	CUSTOMER: AVW EQUIPMENT CO.	
CHECKED BY		PROJECT: SW2 - SIDE WASHERS	
QTY		DESCRIPTION: Dual Shock Absorber Bracket	
RELEASE DATE	11/30/2021	PART NUMBER: SAB1	REV# 2
DIMENSION ARE IN INCHES & PROVIDED PRIOR TO SURFACE TREATMENTS, UNLESS NOTED.		SIZE A	EST WEIGHT: 52 lbmass
			SHEET 19 of 36

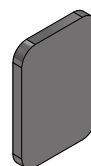
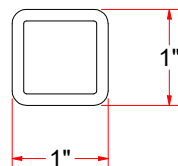
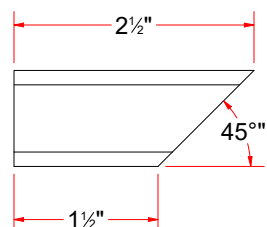
AVWCC - 1/2" Clevis Assembly



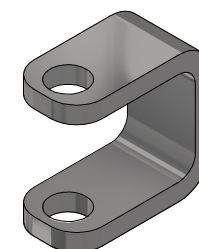
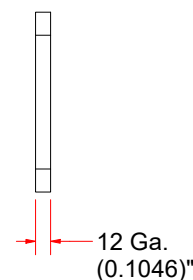
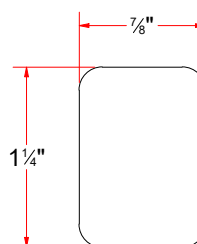
Parts List		
ITEM	QTY	DESCRIPTION
2	1	Sq. Tubing 1" x 2 1/2" LG.
3	1	Steel Plate #12Gax7/8"x1 1/4"
9	1	Mount, for air cylinder



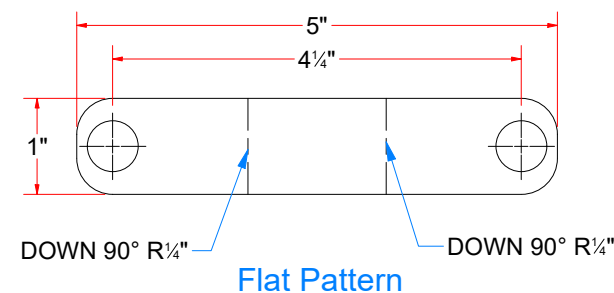
Sq. Tubing 1" x 2 1/2" LG.



Steel Plate #12Gax7/8"x1 1/4"



Mount, for air cylinder



AVW EQUIPMENT CO., INC.
105 S. 9TH AVENUE
MAYWOOD, IL 60153
Tel: 708-343-7738 Fax: 708-343-9065
WWW.AVWEQUIPMENT.COM

- COMPANY PROPRIETARY NOTE -

THIS DRAWING AND ITS DESIGNS ARE PROPERTY OF AVW EQUIPMENT CO. & IT IS NOT TO BE USED OR REPRODUCED WITHOUT THE PERMISSION FROM AVW CO.

DRAWN BY

Ljubomir

CUSTOMER: AVW EQUIPMENT CO.

CHECKED BY

PROJECT: SW2 - SIDE WASHERS

QTY

DESCRIPTION: 1/2" Clevis Assembly

RELEASE DATE

11/30/2021

PART NUMBER: AVWCC

REV# 2

DIMENSION ARE IN INCHES & PROVIDED PRIOR TO SURFACE TREATMENTS, UNLESS NOTED.

SIZE
A

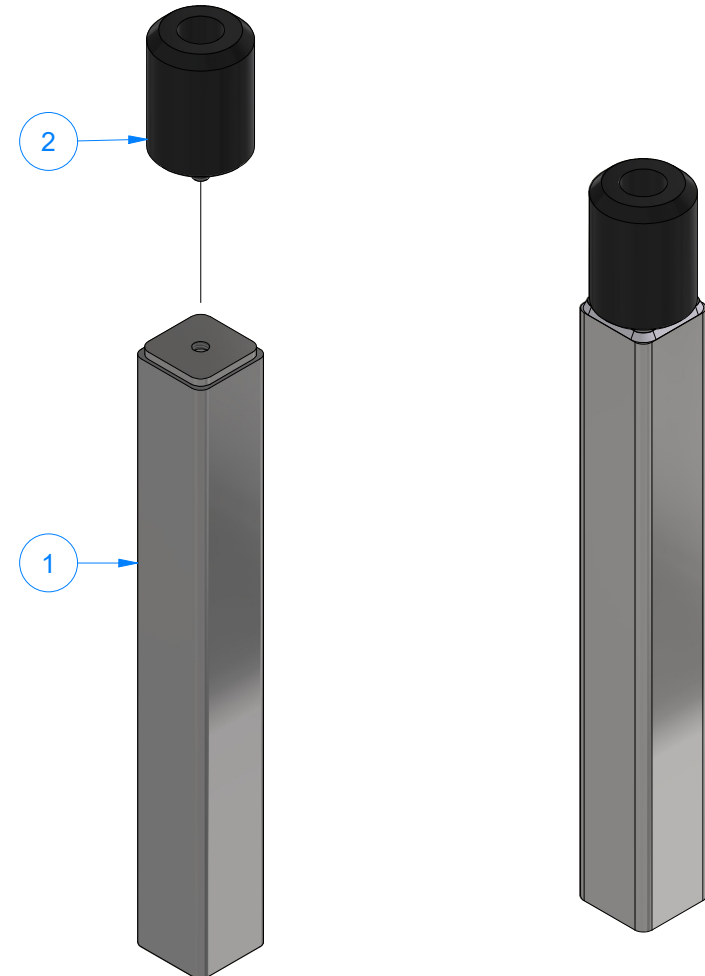
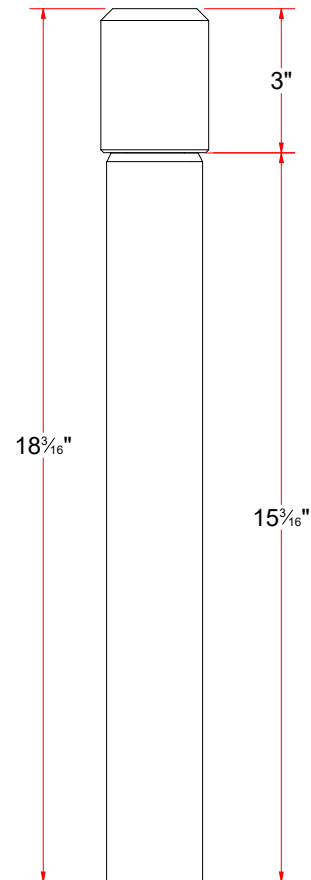
EST WEIGHT: 1 lbmass

SHEET 20 of 36

PATH:L:\Libraries\AVW Components\Clevis\AVWCC - 1_2 Clevis\AVWCC - 1_2 Clevis.iam

WA1DB - Rubber Bumper Stop Assembly

Parts List		
ITEM	QTY	DESCRIPTION
1	1	Bumber Stop Arm Weld Assy
2	1	Rubber Bump, Long



AVW EQUIPMENT CO., INC.
105 S. 9TH AVENUE
MAYWOOD, IL 60153
Tel: 708-343-7738 Fax: 708-343-9065
WWW.AVWEQUIPMENT.COM

- COMPANY PROPRIETARY NOTE -

THIS DRAWING AND ITS DESIGNS ARE PROPERTY OF AVW EQUIPMENT CO. & IT IS NOT TO BE USED OR REPRODUCED WITHOUT THE PERMISSION FROM AVW CO.

DRAWN BY

Ljubomir

CUSTOMER: AVW EQUIPMENT CO.

CHECKED BY

PROJECT: SW2 - SIDE WASHERS

QTY

DESCRIPTION: Rubber Bumper Stop Assembly

RELEASE DATE

11/30/2021

PART NUMBER: WA1DB

REV# 2

DIMENSION ARE IN INCHES & PROVIDED PRIOR TO SURFACE TREATMENTS, UNLESS NOTED.

SIZE
A

EST WEIGHT: 6 lbmass

SHEET 21 of 36

PATH:L:\Libraries\Parts\Rubber Bump Stop\Rubber Bumper Stopper.iam

WA1DBA - Bumber Stop Arm Weld Assy

Parts List		
ITEM	QTY	DESCRIPTION
1	1	Sq. Tube 2" x 15"L
2	1	Plate #3/16" x 1-7/8" x 1-7/8"

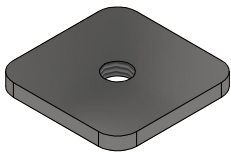
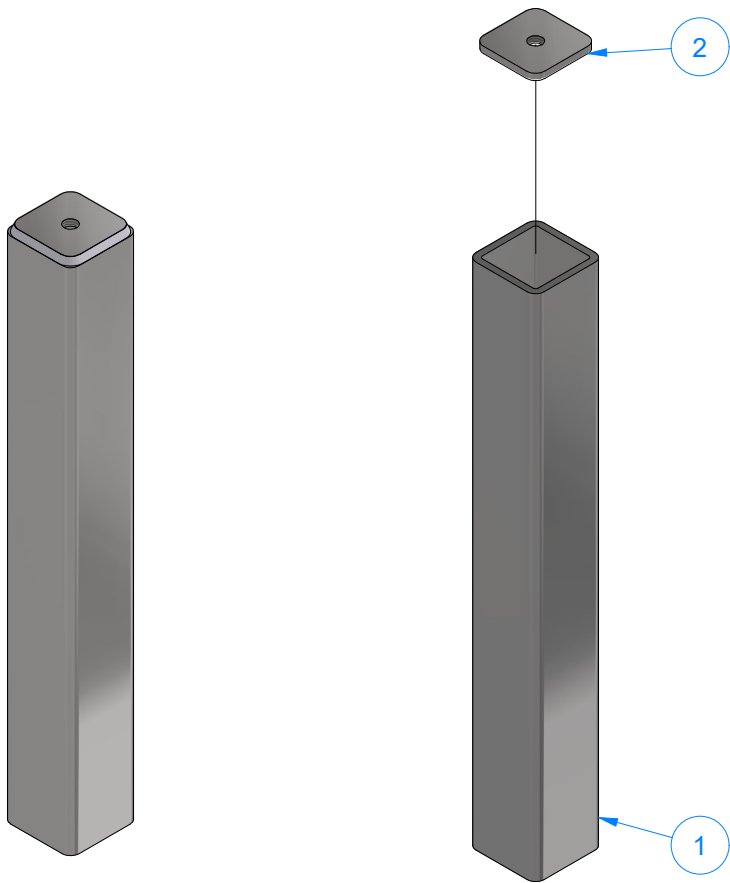
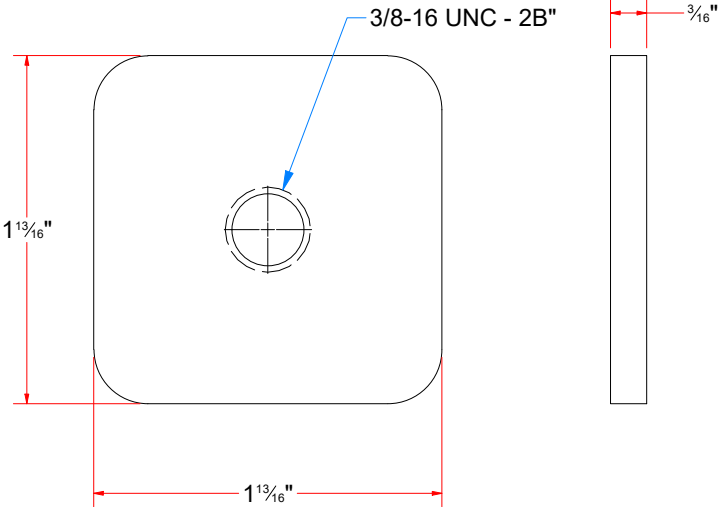


Plate #3/16" x 1-7/8" x 1-7/8"



AVW EQUIPMENT CO., INC.
105 S. 9TH AVENUE
MAYWOOD, IL 60153
Tel: 708-343-7738 Fax: 708-343-9065
WWW.AVWEQUIPMENT.COM

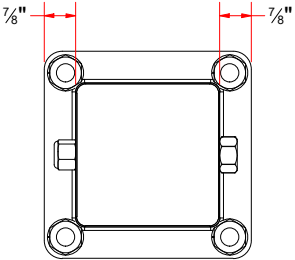
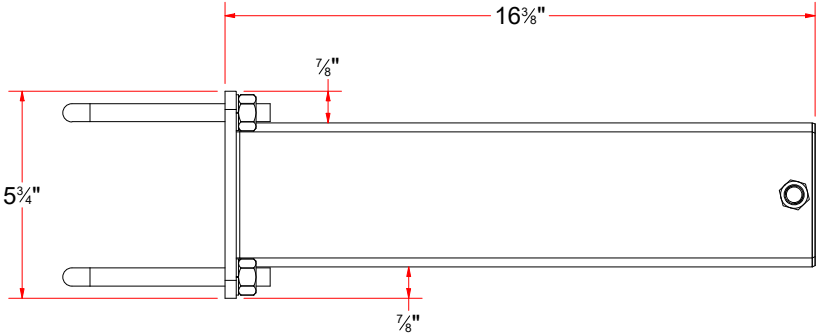
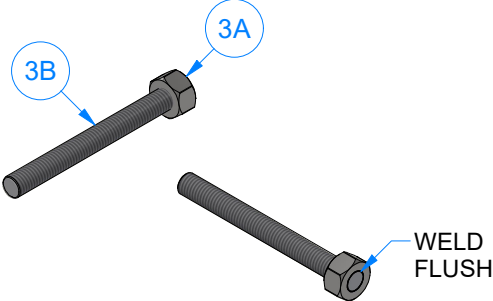
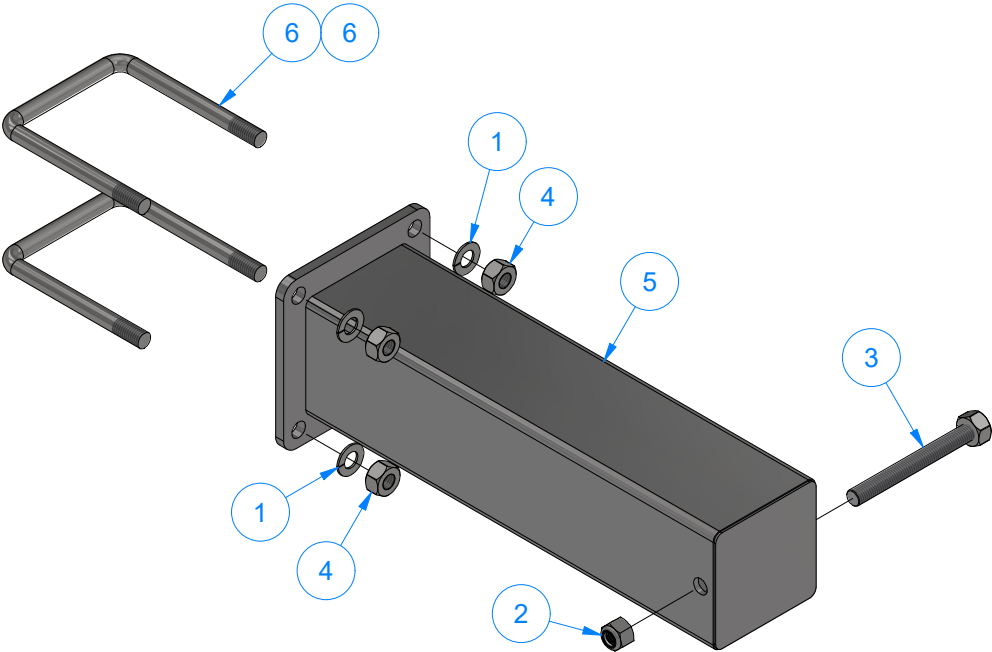
- COMPANY PROPRIETARY NOTE -
THIS DRAWING AND ITS DESIGNS ARE PROPERTY OF AVW EQUIPMENT CO. &
IT IS NOT TO BE USED OR REPRODUCED WITHOUT THE PERMISSION FROM AVW CO.

DRAWN BY	Ljubomir	CUSTOMER: AVW EQUIPMENT CO.	
CHECKED BY		PROJECT: SW2 - SIDE WASHERS	
QTY		DESCRIPTION: Bumber Stop Arm Weld Assy	
RELEASE DATE	11/30/2021	PART NUMBER: WA1DBA	REV# 2
DIMENSION ARE IN INCHES & PROVIDED PRIOR TO SURFACE TREATMENTS, UNLESS NOTED.		SIZE A	EST WEIGHT:
			SHEET 22 of 36

SW2DBB - Adjustable Brush Mount

Parts List		
ITEM	QTY	DESCRIPTION
1	4	1/2" Split Lock Washer
2	1	1/2"-13 Nylon Lock Nut
3	1	Threaded Rod w/ Nut, Weldment
4	4	1/2-13 Hex Nut
5	1	Adjustable Brush Mount - Weldment
6	2	Square U Bolt D 1/2" x 4" x 6 1/4" LG

Parts List		
ITEM	QTY	DESCRIPTION
3A	1	1/2-13 Hex Nut
3B	1	Threaded Rod 1/2"-13 X 5" LG.

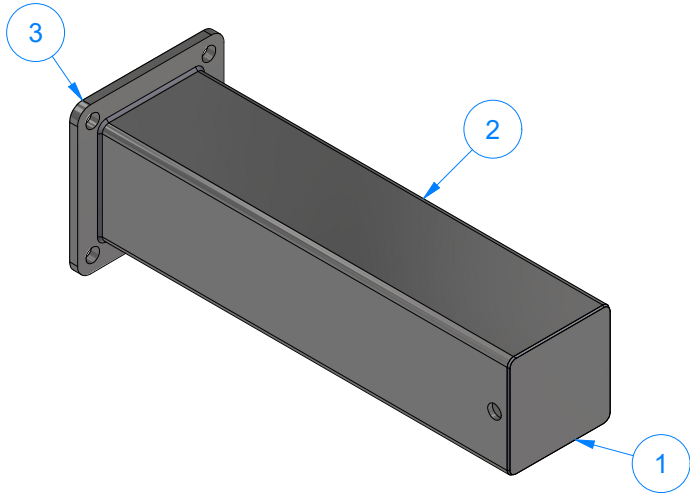


AVW EQUIPMENT CO., INC.
105 S. 9TH AVENUE
MAYWOOD, IL 60153
Tel: 708-343-7738 Fax: 708-343-9065
WWW.AVWEQUIPMENT.COM

- COMPANY PROPRIETARY NOTE -
THIS DRAWING AND ITS DESIGNS ARE PROPERTY OF AVW EQUIPMENT CO. &
IT IS NOT TO BE USED OR REPRODUCED WITHOUT THE PERMISSION FROM AVW CO.

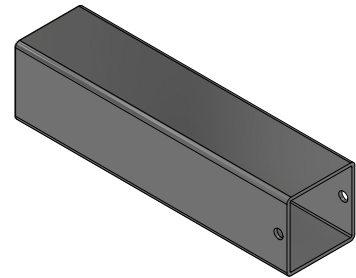
DRAWN BY	Ljubomir	CUSTOMER: AVW EQUIPMENT CO.	
CHECKED BY		PROJECT: SW2 - SIDE WASHERS	
QTY		DESCRIPTION: Adjustable Brush Mount	
RELEASE DATE	11/30/2021	PART NUMBER: SW2DBB	REV# 2
DIMENSION ARE IN INCHES & PROVIDED PRIOR TO SURFACE TREATMENTS, UNLESS NOTED.		SIZE A	EST WEIGHT:
			SHEET 23 of 36

SW2DBBA - Adjustable Brush Mount - Weldment

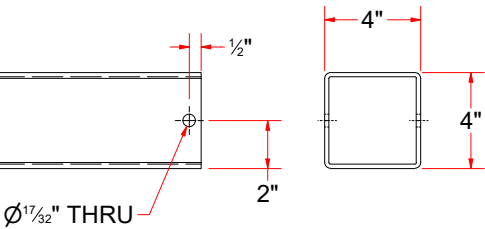


Sq. SS Plate 14Ga x 3 15/16

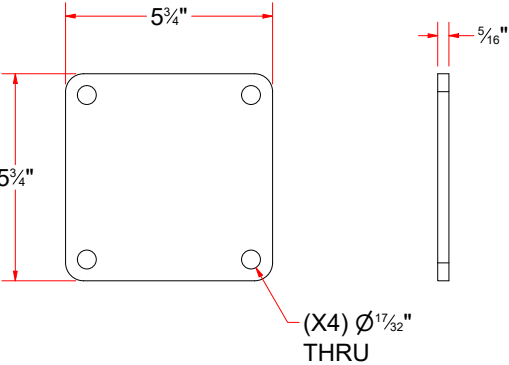
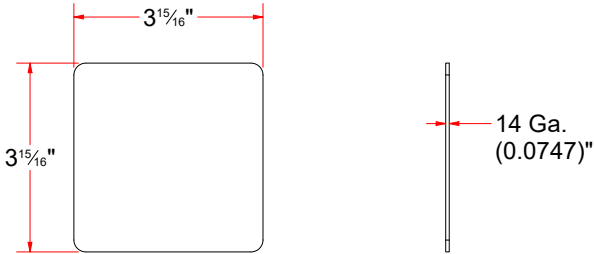
SS Plate #5/16" x 5 3/4" x 5 3/4"



Sq. Tube 4" x 4" x 16" LG



Parts List		
ITEM	QTY	DESCRIPTION
1	1	Sq. SS Plate 14Ga x 3 15/16
2	1	Sq. Tube 4" x 4" x 16" LG
3	1	SS Plate #5/16" x 5 3/4" x 5 3/4"

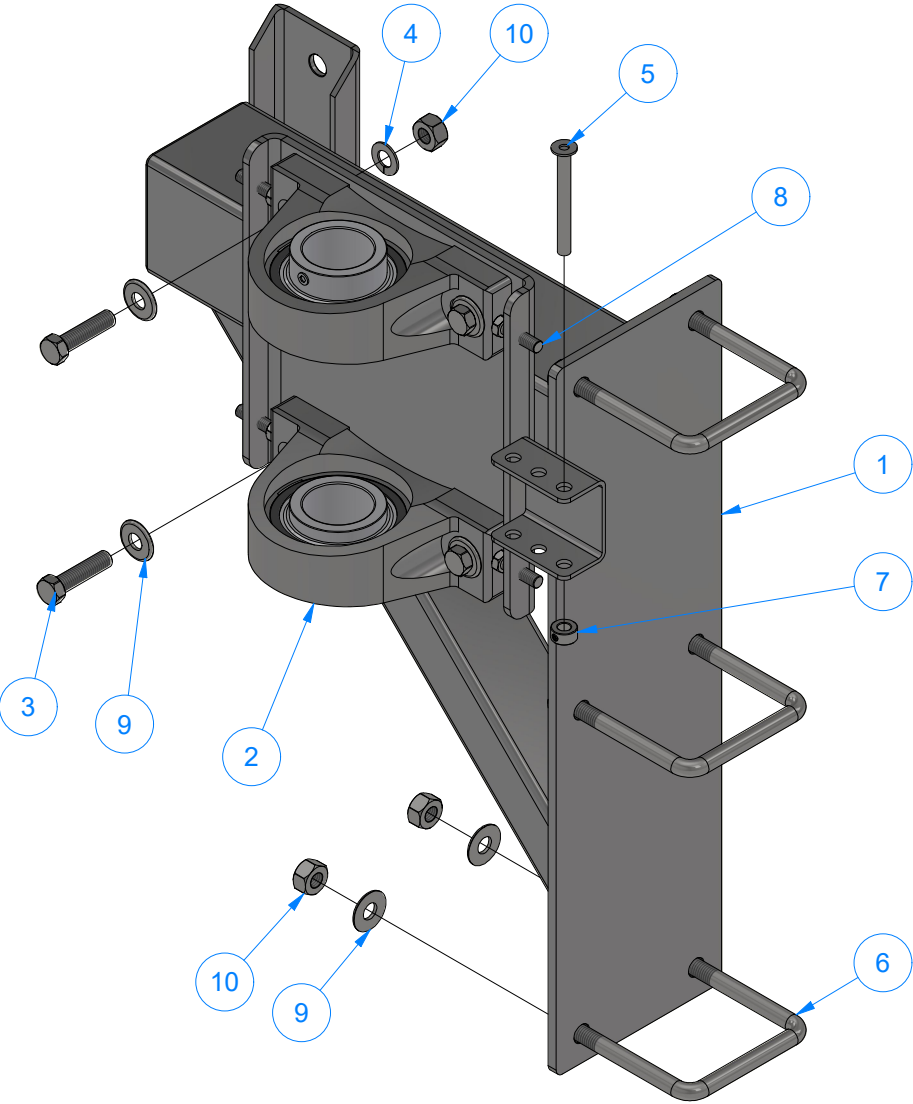


AVW EQUIPMENT CO., INC.
105 S. 9TH AVENUE
MAYWOOD, IL 60153
Tel: 708-343-7738 Fax: 708-343-9065
WWW.AVWEQUIPMENT.COM

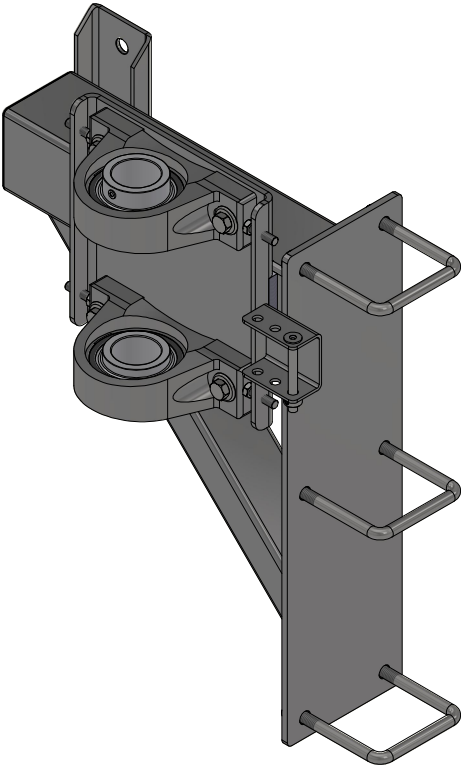
- COMPANY PROPRIETARY NOTE -
THIS DRAWING AND ITS DESIGNS ARE PROPERTY OF AVW EQUIPMENT CO. &
IT IS NOT TO BE USED OR REPRODUCED WITHOUT THE PERMISSION FROM AVW CO.

DRAWN BY	Ljubomir	CUSTOMER: AVW EQUIPMENT CO.	
CHECKED BY		PROJECT: SW2 - SIDE WASHERS	
QTY		DESCRIPTION: Adjustable Brush Mount - Weldment	
RELEASE DATE	11/30/2021	PART NUMBER: SW2DBBA	REV# 2
DIMENSION ARE IN INCHES & PROVIDED PRIOR TO SURFACE TREATMENTS, UNLESS NOTED.		SIZE A	EST WEIGHT: 15.726 lbmass
			SHEET 24 of 36

SW2DA - Arm Mount - Driver Side



Parts List		
ITEM	QTY	DESCRIPTION
1	1	Side Washer Arm Mount - Weldment [Driver]
2	2	2" Pillow Block
3	4	1/2"-13 x 2" L Hex Screw
4	4	1/2" Split Lock Washer
5	1	Pin 3/8" x 3 1/2" LG
6	3	Square U Bolt D 1/2" x 4" x 5" LG
7	1	3/8" Set Screw Collar
8	4	3/8"-16x1 1/4" UNC Hex Screw
9	10	1/2" Flat Washer
10	10	1/2-13 Hex Nut



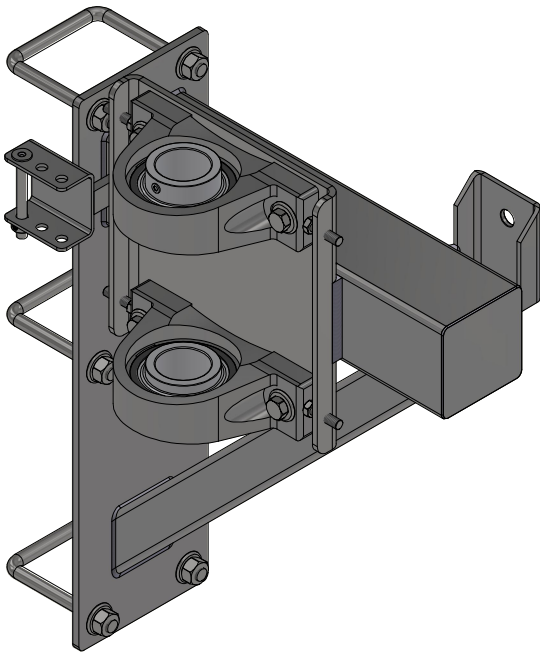
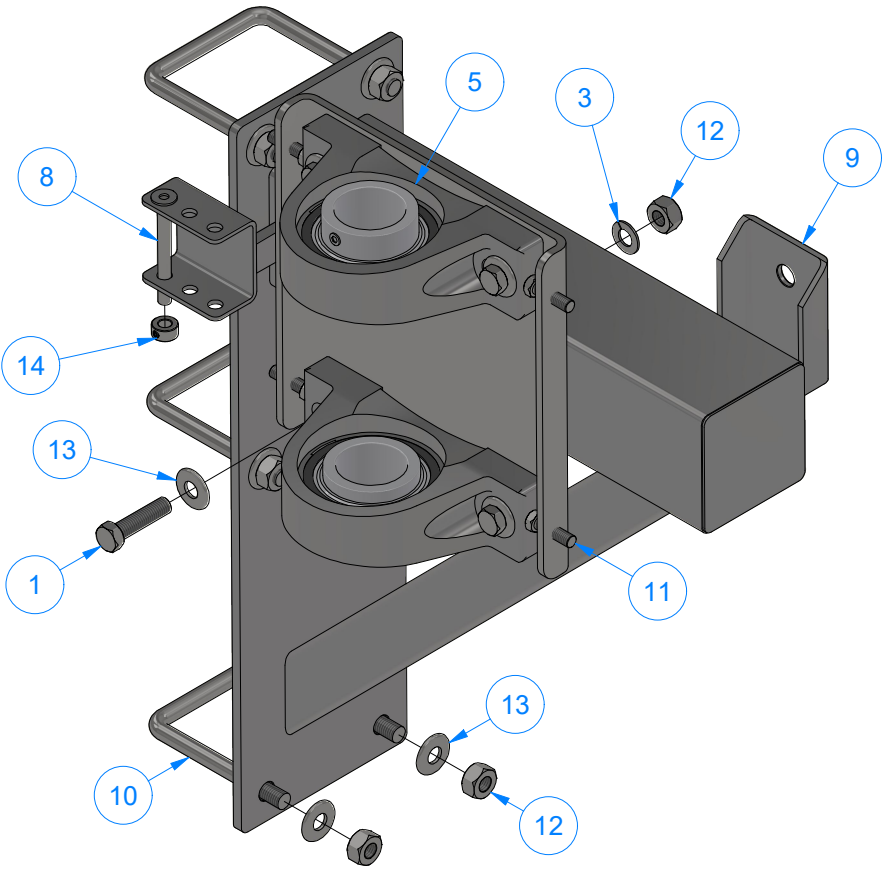
AVW EQUIPMENT CO., INC.
105 S. 9TH AVENUE
MAYWOOD, IL 60153
Tel: 708-343-7738 Fax: 708-343-9065
WWW.AVWEQUIPMENT.COM

- COMPANY PROPRIETARY NOTE -
THIS DRAWING AND ITS DESIGNS ARE PROPERTY OF AVW EQUIPMENT CO. &
IT IS NOT TO BE USED OR REPRODUCED WITHOUT THE PERMISSION FROM AVW CO.

DRAWN BY	Ljubomir	CUSTOMER: AVW EQUIPMENT CO.		
CHECKED BY		PROJECT: SW2 - SIDE WASHERS		
QTY		DESCRIPTION: Arm Mount - Driver Side		
RELEASE DATE	11/30/2021	PART NUMBER: SW2DA	REV# 2	
DIMENSION ARE IN INCHES & PROVIDED PRIOR TO SURFACE TREATMENTS, UNLESS NOTED.		SIZE A	EST WEIGHT: 71 lbmass	SHEET 25 of 36

SW2EA - Arm Mount - Passenger Side

Parts List		
ITEM	QTY	DESCRIPTION
1	4	1/2"-13 x 2" L Hex Screw
3	4	1/2" Split Lock Washer
5	2	2" Pillow Block
11	4	3/8"-16x1 1/4" UNC Hex Screw
8	1	Pin 3/8" x 3 1/2" LG
9	1	Side Washer Arm Mount - Weldment [Passenger]
10	3	Square U Bolt D 1/2" x 4" x 5" LG
12	10	1/2-13 Hex Nut
13	10	1/2" Flat Washer
14	1	3/8" Set Screw Collar

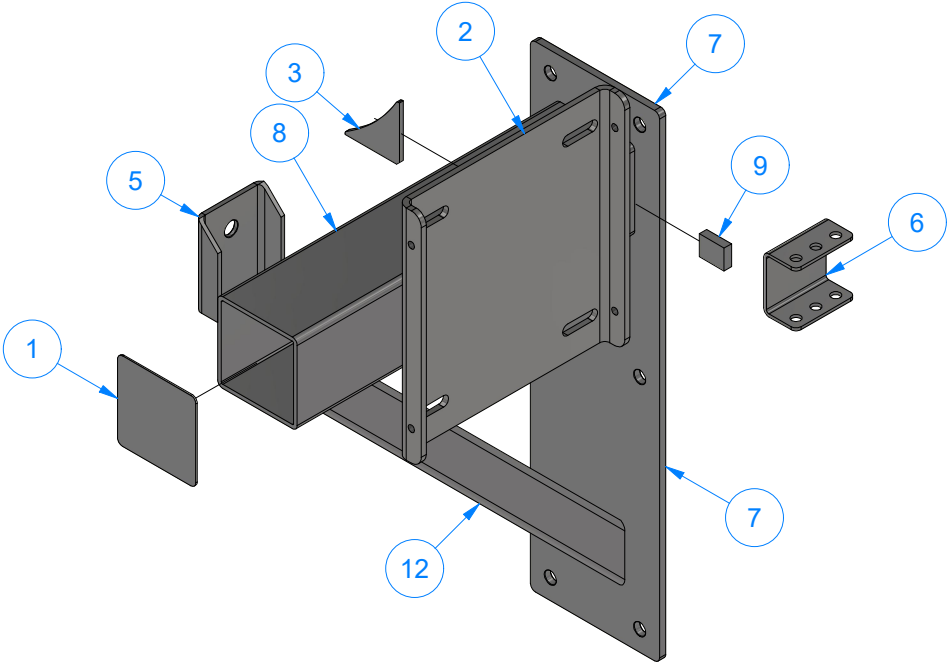
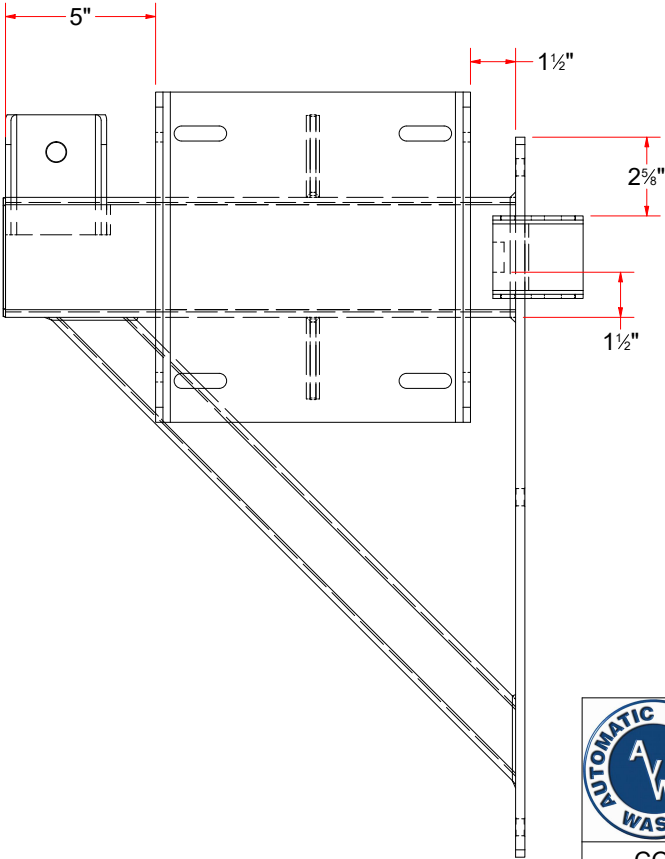
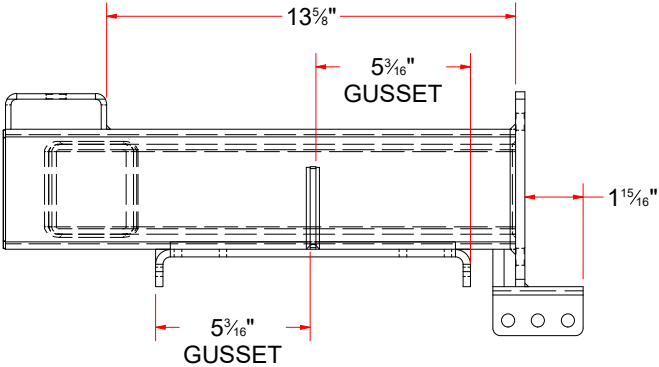


AVW EQUIPMENT CO., INC.
105 S. 9TH AVENUE
MAYWOOD, IL 60153
Tel: 708-343-7738 Fax: 708-343-9065
WWW.AVWEQUIPMENT.COM

- COMPANY PROPRIETARY NOTE -
THIS DRAWING AND ITS DESIGNS ARE PROPERTY OF AVW EQUIPMENT CO. &
IT IS NOT TO BE USED OR REPRODUCED WITHOUT THE PERMISSION FROM AVW CO.

DRAWN BY	Ljubomir	CUSTOMER: AVW EQUIPMENT CO.	
CHECKED BY		PROJECT: SW2 - SIDE WASHERS	
QTY		DESCRIPTION: Arm Mount - Passenger Side	
RELEASE DATE	11/30/2021	PART NUMBER: SW2EA	REV# 2
DIMENSION ARE IN INCHES & PROVIDED PRIOR TO SURFACE TREATMENTS, UNLESS NOTED.		SIZE A	EST WEIGHT: 71 lbmass
			SHEET 26 of 36

SW2DAA - Side Washer Arm Mount - Weldment [Driver]



Parts List		
ITEM	QTY	DESCRIPTION
1	1	Sq. SS Plate 14Ga x 3 15/16
2	1	Connecting Plate #1/4" x 12" x 11"
3	2	Gusset #3/16" x 2-3_4x2-3_4
5	1	Retract Kit Bracket
6	1	Shock Absorber Bracket
7	1	Side Washer Arm Mount - Plate
8	1	Sq. Tube #7Ga. (0.180 in) x 4" x 17" LG.
9	1	SS Bar Flat #3/8" x 1" x 1 1/4" LG.
12	1	Rect. Tube 2" x 3" x #7Ga Wall x 22" LG.

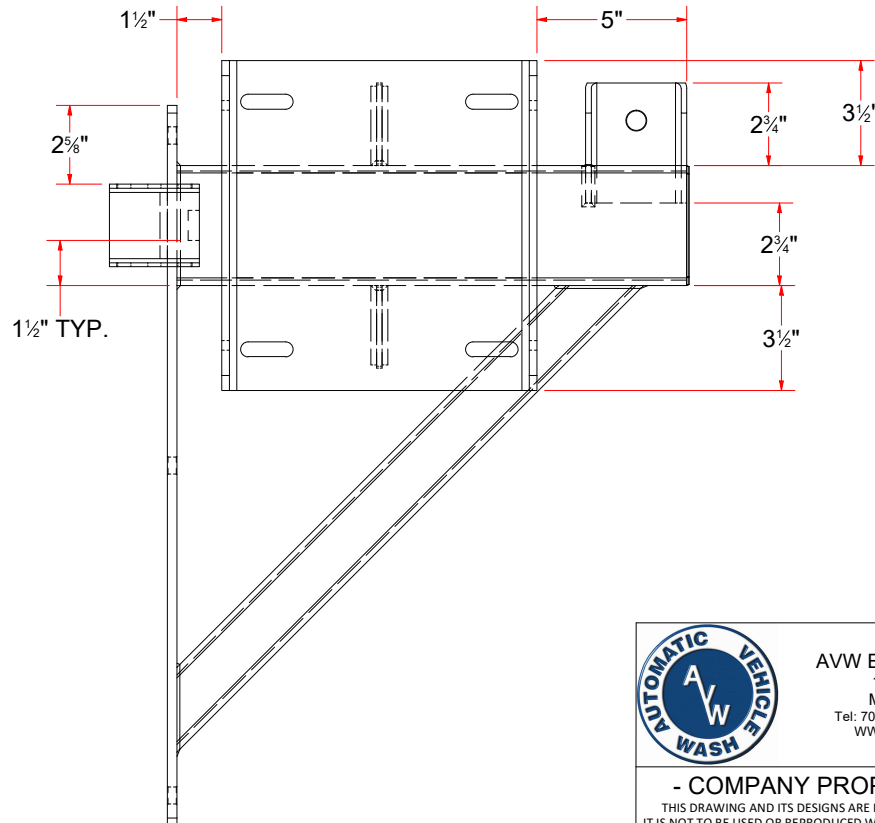
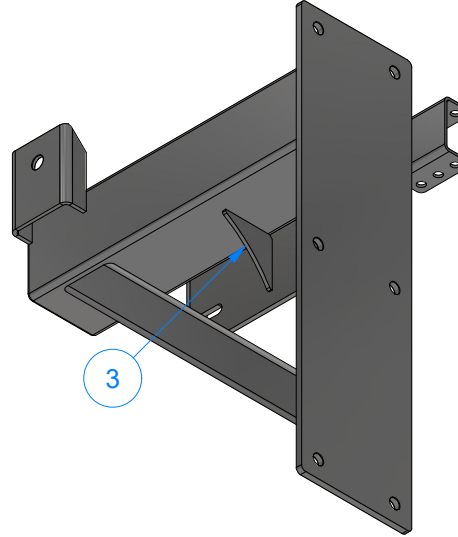
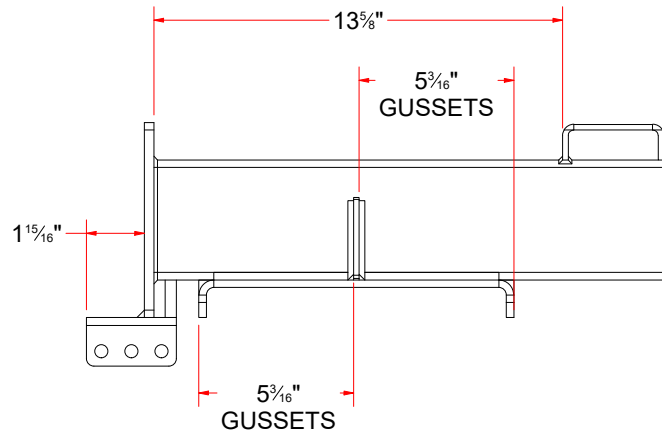


AVW EQUIPMENT CO., INC.
105 S. 9TH AVENUE
MAYWOOD, IL 60153
Tel: 708-343-7738 Fax: 708-343-9065
WWW.AVWEQUIPMENT.COM

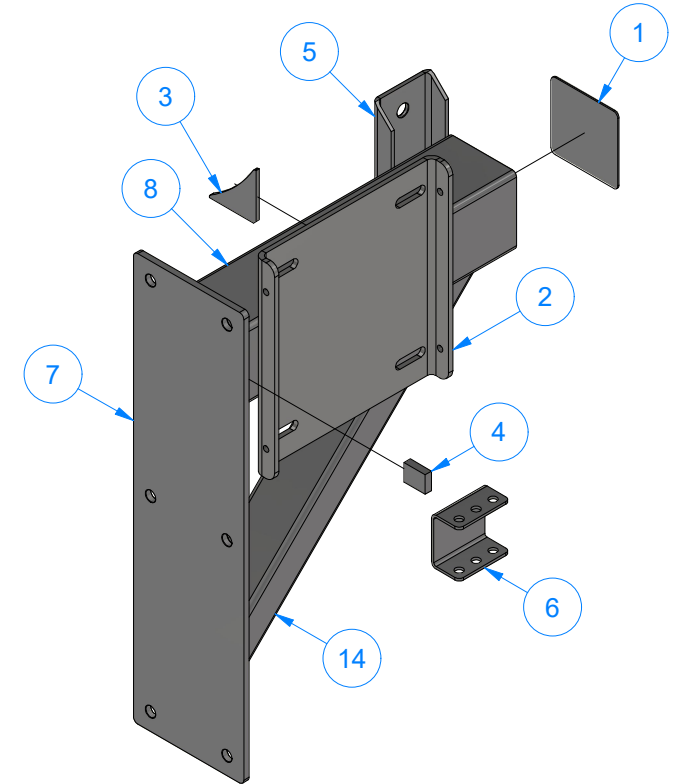
- COMPANY PROPRIETARY NOTE -
THIS DRAWING AND ITS DESIGNS ARE PROPERTY OF AVW EQUIPMENT CO. &
IT IS NOT TO BE USED OR REPRODUCED WITHOUT THE PERMISSION FROM AVW CO.

DRAWN BY	Ljubomir	CUSTOMER: AVW EQUIPMENT CO.	
CHECKED BY		PROJECT: SW2 - SIDE WASHERS	
QTY		DESCRIPTION: Side Washer Arm Mount - Weldment [Driver]	
RELEASE DATE	11/30/2021	PART NUMBER: SW2DAA	REV# 2
DIMENSION ARE IN INCHES & PROVIDED PRIOR TO SURFACE TREATMENTS, UNLESS NOTED.		SIZE A	EST WEIGHT: 48.530 lbmass
PATH: L:\Libraries\Productivity\Assembly Arms\Side Washer Arms\SW2 - Side Washer Assemblies\Parts\SW2DA - Arm Mount Assembly [Driver Side]\SW2DAA - Arm Mount Weldment [Driver Side]\SW2DAA.iam		SHEET 27 of 36	

SW2EAA - Side Washer Arm Mount - Weldment [Passenger]



Parts List		
ITEM	QTY	DESCRIPTION
1	1	Sq. SS Plate 14Ga x 3 15/16
2	1	Connecting Plate #1/4" x 12" x 11"
3	2	Gusset #3/16" x 2-3_4x2-3_4
4	1	SS Bar Flat #3/8" x 1" x 1 1/4" LG.
5	1	Retract Kit Bracket
6	1	Shock Absorber Bracket
7	1	Side Washer Arm Mount - Plate
8	1	Sq. Tube #7Ga. (0.180 in) x 4" x 17" LG.
14	1	Rect. Tube 2" x 3" x #7Ga Wall x 22" LG.



AVW EQUIPMENT CO., INC.
105 S. 9TH AVENUE
MAYWOOD, IL 60153
Tel: 708-343-7738 Fax: 708-343-9065
WWW.AVWEQUIPMENT.COM

- COMPANY PROPRIETARY NOTE -

THIS DRAWING AND ITS DESIGNS ARE PROPERTY OF AVW EQUIPMENT CO. & IT IS NOT TO BE USED OR REPRODUCED WITHOUT THE PERMISSION FROM AVW CO.

DRAWN BY

Ljubomir

CUSTOMER: AVW EQUIPMENT CO.

CHECKED BY

PROJECT: SW2 - SIDE WASHERS

QTY

DESCRIPTION: Side Washer Arm Mount - Weldment [Passenger]

RELEASE DATE

11/30/2021

PART NUMBER: SW2EAA

REV# 2

DIMENSION ARE IN INCHES & PROVIDED PRIOR TO SURFACE TREATMENTS, UNLESS NOTED.

SIZE A

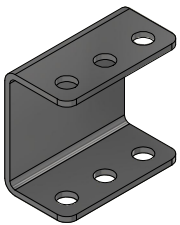
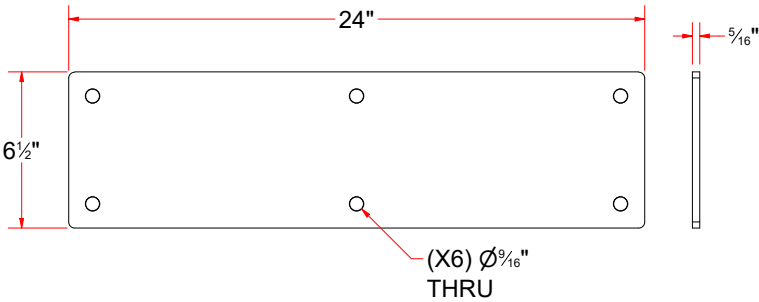
EST WEIGHT: 46 lbmass

SHEET 28 of 36

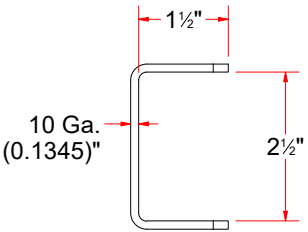
PATH: L:\Libraries\Productivity\Assembly Arms\Side Washer Arms\SW2 - Side Washer Assemblies\Parts\SW2EA - Arm Mount Assembly [Passenger Side]\SW2EAA - Arm Mount Weldment [Passenger Side]\SW2EAA.iam



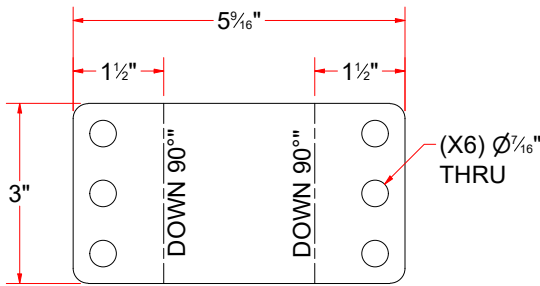
Side Washer Arm Mount - Plate



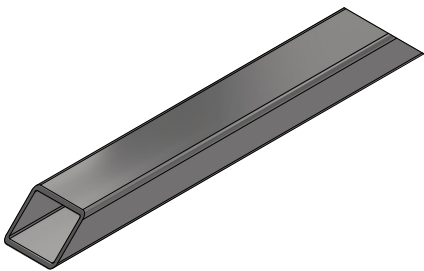
Shock Absorber Bracket



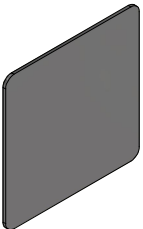
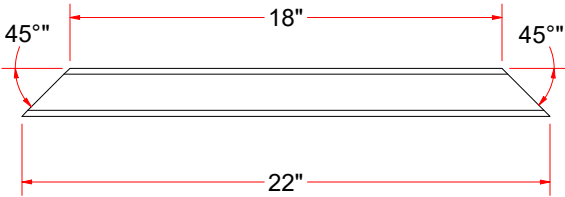
FORMED



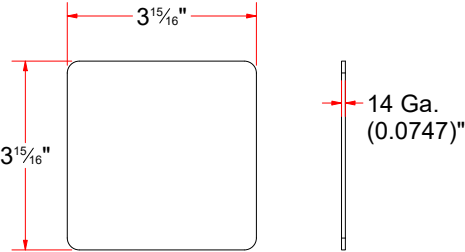
FLAT PATTERN



Rect. Tube 2" x 3" x #7Ga Wall x 22" LG.



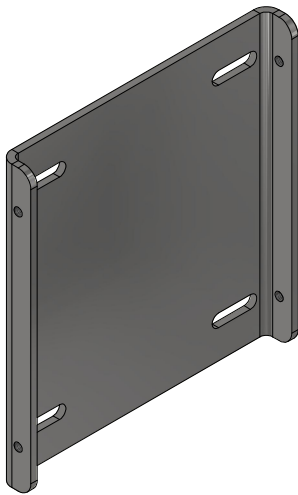
Sq. SS Plate 14Ga x 3 15/16



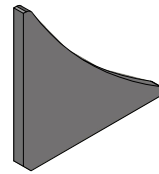
AVW EQUIPMENT CO., INC.
105 S. 9TH AVENUE
MAYWOOD, IL 60153
Tel: 708-343-7738 Fax: 708-343-9065
WWW.AVWEQUIPMENT.COM

- COMPANY PROPRIETARY NOTE -
THIS DRAWING AND ITS DESIGNS ARE PROPERTY OF AVW EQUIPMENT CO. &
IT IS NOT TO BE USED OR REPRODUCED WITHOUT THE PERMISSION FROM AVW CO.

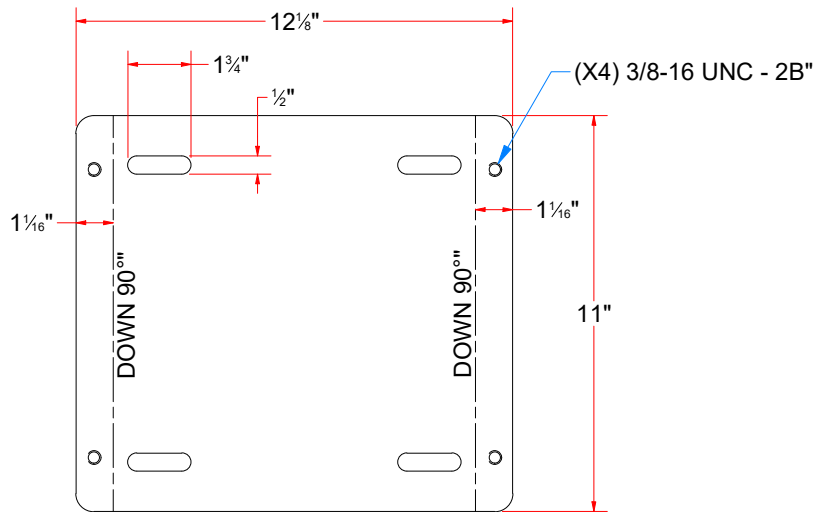
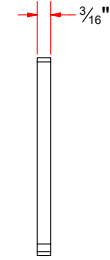
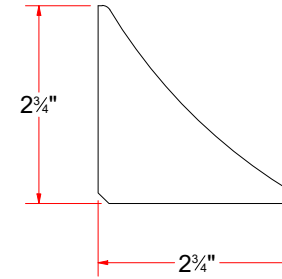
DRAWN BY	Ljubomir	CUSTOMER: AVW EQUIPMENT CO.	
CHECKED BY		PROJECT: SW2 - SIDE WASHERS	
QTY		DESCRIPTION: Side Washer Arm Mount - Plate	
RELEASE DATE	11/30/2021	PART NUMBER: SW2DAAA	REV# 2
DIMENSION ARE IN INCHES & PROVIDED PRIOR TO SURFACE TREATMENTS, UNLESS NOTED.		SIZE A	EST WEIGHT:
			SHEET 29 of 36



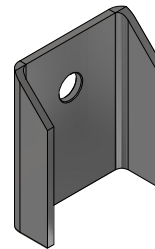
Connecting Plate #1/4" x 12" x 11"



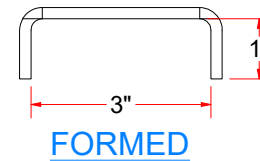
Gusset #3/16" x 2-3_4x2-3_4



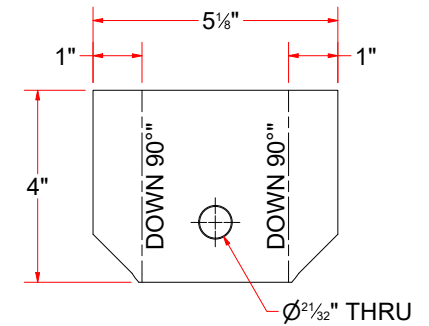
FLAT PATTERN



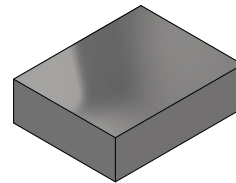
Retract Kit Bracket



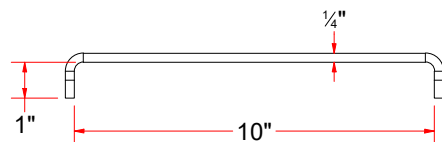
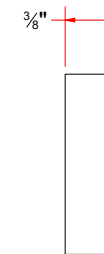
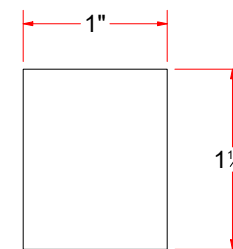
FORMED



FLAT PATTERN



SS Bar Flat #3/8" x 1" x 1 1/4" LG.



FORMED



AVW EQUIPMENT CO., INC.
105 S. 9TH AVENUE
MAYWOOD, IL 60153
Tel: 708-343-7738 Fax: 708-343-9065
WWW.AVWEQUIPMENT.COM

- COMPANY PROPRIETARY NOTE -

THIS DRAWING AND ITS DESIGNS ARE PROPERTY OF AVW EQUIPMENT CO. & IT IS NOT TO BE USED OR REPRODUCED WITHOUT THE PERMISSION FROM AVW CO.

DRAWN BY

Ljubomir

CUSTOMER: AVW EQUIPMENT CO.

CHECKED BY

PROJECT: SW2 - SIDE WASHERS

QTY

DESCRIPTION: Connecting Plate #1/4" x 12" x 11"

RELEASE DATE

11/30/2021

PART NUMBER: SW2DAAC

REV# 2

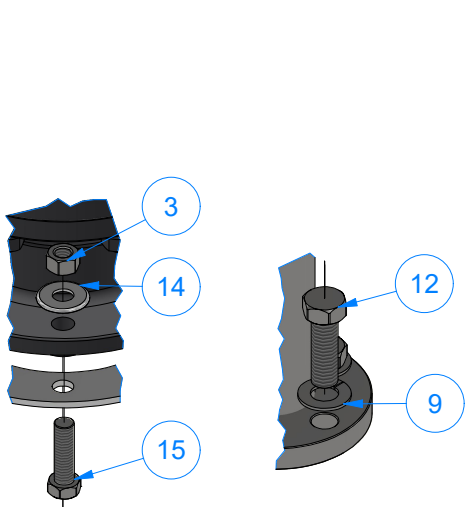
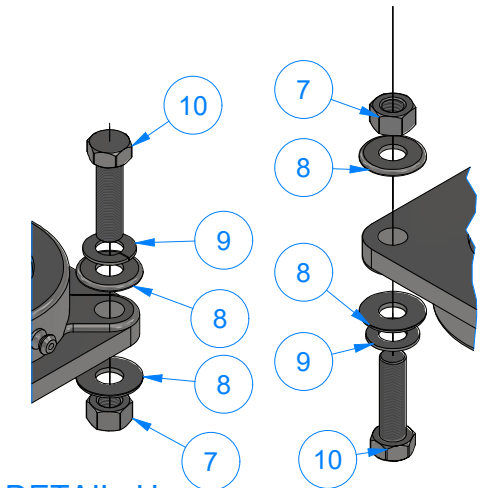
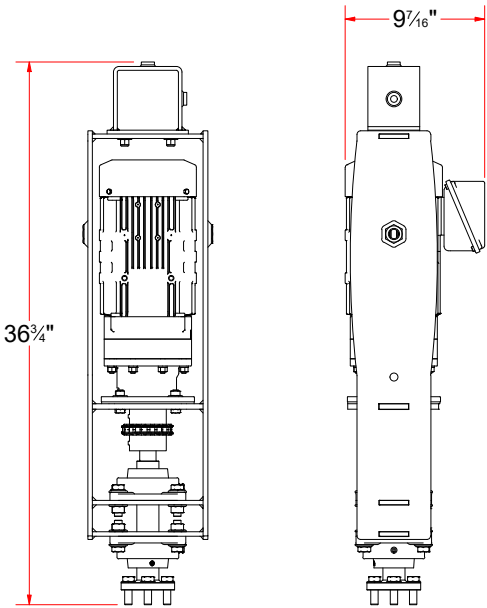
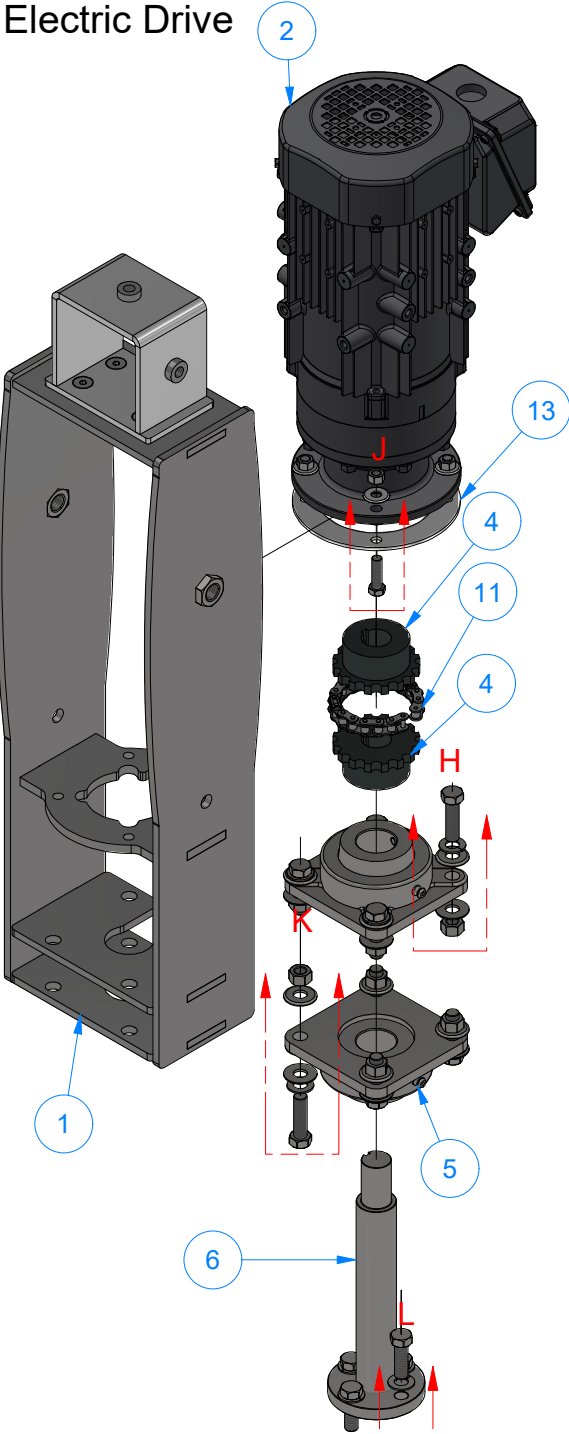
DIMENSION ARE IN INCHES & PROVIDED PRIOR TO SURFACE TREATMENTS, UNLESS NOTED.

SIZE A

EST WEIGHT:

SHEET 30 of 36

SW10K-EL - Side Wash Brush Shaft Assembly,
Electric Drive



Parts List		
ITEM	QTY	DESCRIPTION
1	1	Motor Mount, Side Washer
2	1	Sumitomo Gearmotor 1 1/8" Shaft
3	4	Hex Nut - 3/8"-16
4	2	Chain Coupling Flange 1 1/8"
5	2	1-1/2" Flange Mount Bearing-SS w/ plated Insert
6	1	Brush Stub Shaft 1 1/2" x 10" L
7	8	1/2" - 13 UNC Hex Nut
8	16	1/2" Flat Washer
9	12	1/2" Split Lock Washer
10	8	1/2" - 28 x 1.75" UNC Hex Screw
11	1	Chain Assembly Motor-to-Shaft
12	4	1/2" - 13 x 1 1/2" UNC Hex Screw
13	1	SS Plate #10Gax 6 1/4" OD
14	4	3/8" Flat Washer
15	4	3/8"-16x1 1/4" UNC Hex Screw

DETAIL H

DETAIL K

DETAIL J

DETAIL L



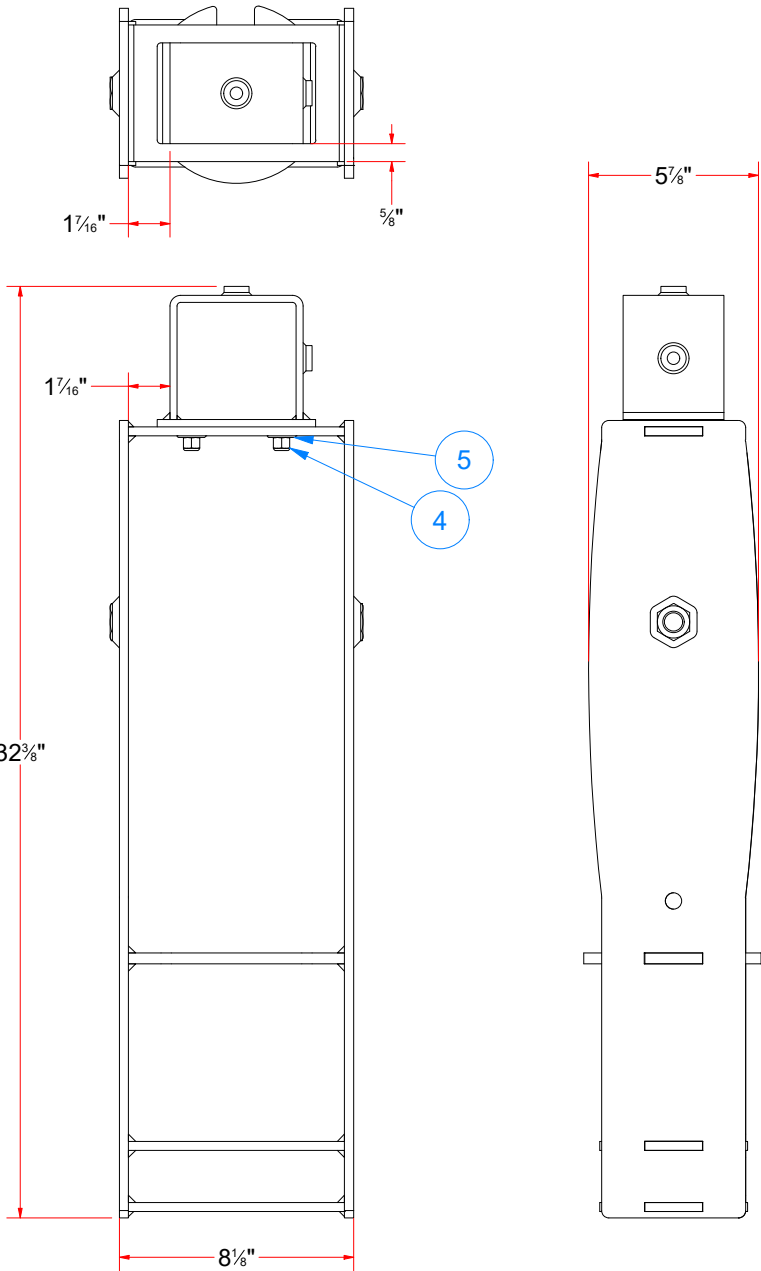
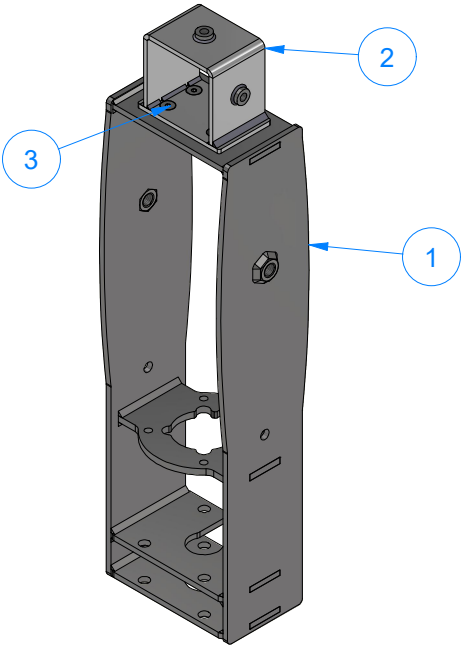
AVW EQUIPMENT CO., INC.
105 S. 9TH AVENUE
MAYWOOD, IL 60153
Tel: 708-343-7738 Fax: 708-343-9065
WWW.AVWEQUIPMENT.COM

- COMPANY PROPRIETARY NOTE -
THIS DRAWING AND ITS DESIGNS ARE PROPERTY OF AVW EQUIPMENT CO. &
IT IS NOT TO BE USED OR REPRODUCED WITHOUT THE PERMISSION FROM AVW CO.

DRAWN BY	Ljubomir	CUSTOMER: AVW EQUIPMENT CO.	
CHECKED BY		PROJECT: SW2 - SIDE WASHERS	
QTY		DESCRIPTION: Side Wash Brush Shaft Assembly, Electric Drive	
RELEASE DATE	11/30/2021	PART NUMBER: SW10K-EL	REV# 2
DIMENSION ARE IN INCHES & PROVIDED PRIOR TO SURFACE TREATMENTS, UNLESS NOTED.		SIZE A	EST WEIGHT:

Parts List		
ITEM	QTY	DESCRIPTION
1	1	Wrap Motor Mount Frame Assembly
2	1	Shaft Assembly Mount
3	4	3/8"-16 UNC x 1" LG. Flat Head Cap Screw
4	4	3/8"-16 Nylon Hex Nut
5	4	3/8" Flat Washer

SW10KA-EL - Motor Mount, Side Washer



AVW EQUIPMENT CO., INC.
105 S. 9TH AVENUE
MAYWOOD, IL 60153
Tel: 708-343-7738 Fax: 708-343-9065
WWW.AVWEQUIPMENT.COM

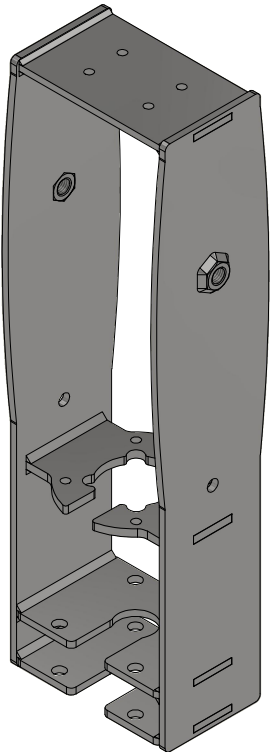
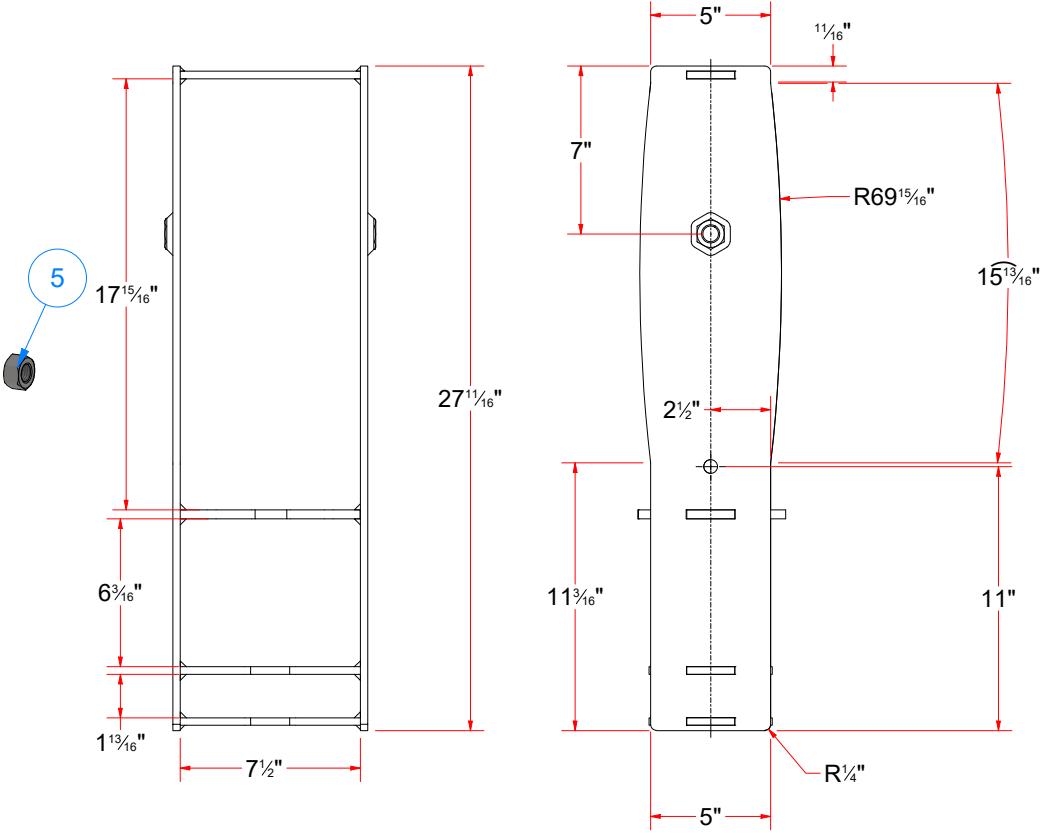
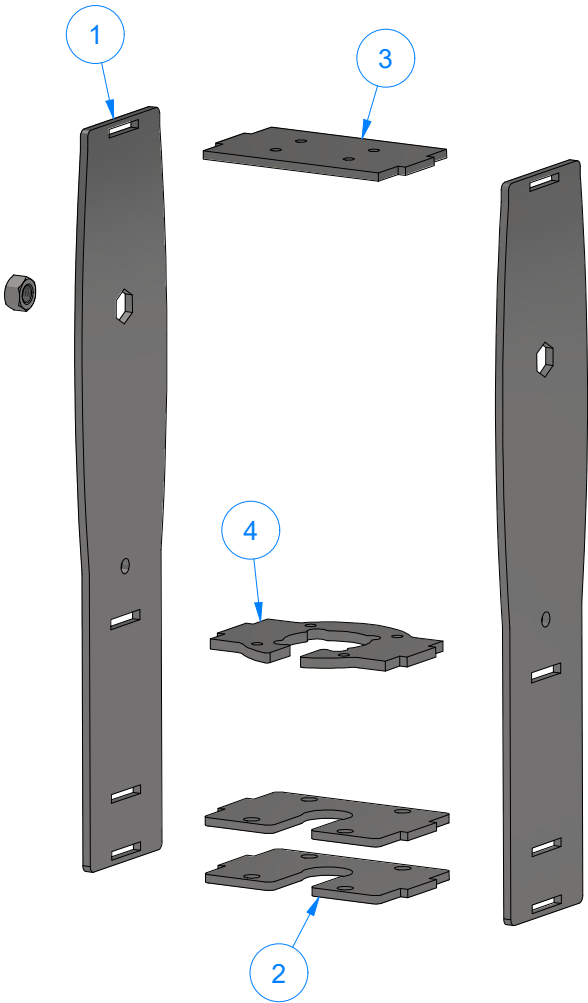
- COMPANY PROPRIETARY NOTE -
THIS DRAWING AND ITS DESIGNS ARE PROPERTY OF AVW EQUIPMENT CO. &
IT IS NOT TO BE USED OR REPRODUCED WITHOUT THE PERMISSION FROM AVW CO.

DRAWN BY	Ljubomir	CUSTOMER: AVW EQUIPMENT CO.		
CHECKED BY		PROJECT: SW2 - SIDE WASHERS		
QTY		DESCRIPTION: Motor Mount, Side Washer		
RELEASE DATE	11/30/2021	PART NUMBER: SW10KA-EL		REV# 2
DIMENSION ARE IN INCHES & PROVIDED PRIOR TO SURFACE TREATMENTS, UNLESS NOTED.		SIZE A	EST WEIGHT:	SHEET 32 of 36

Parts List

ITEM	QTY	DESCRIPTION
1	2	Wrap Motor Mounting Side Plate [5/16" Ga.]
2	2	WMMP [7.5 in x 5.125 in][Wrap Motor Mount][5_16 Ga.]
3	1	Wrap Top Plate [5/16" Ga.]
4	1	Wrap Bearing Mounting Plate [3/8" Ga.]
5	2	Hex Nut - 3/4-10 UNC

Wrap Motor Mount Frame Assembly

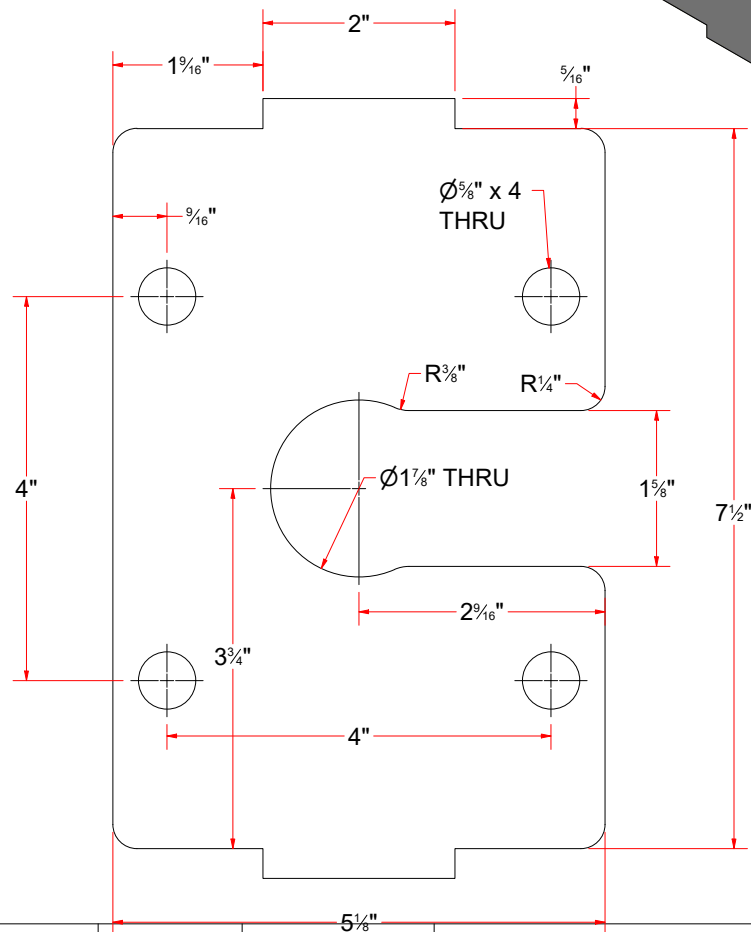
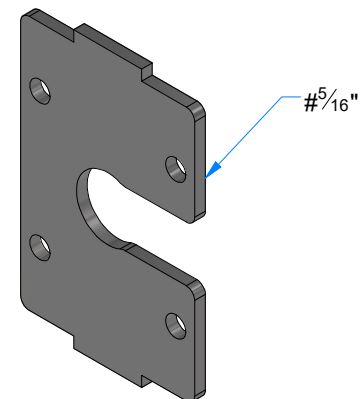
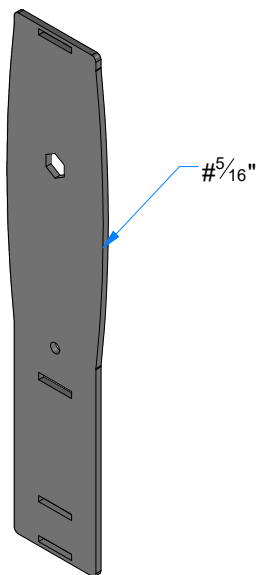


AVW EQUIPMENT CO., INC.
105 S. 9TH AVENUE
MAYWOOD, IL 60153
Tel: 708-343-7738 Fax: 708-343-9065
WWW.AVWEQUIPMENT.COM

- COMPANY PROPRIETARY NOTE -
THIS DRAWING AND ITS DESIGNS ARE PROPERTY OF AVW EQUIPMENT CO. & IT IS NOT TO BE USED OR REPRODUCED WITHOUT THE PERMISSION FROM AVW CO.

DRAWN BY	Ljubomir	CUSTOMER: AVW EQUIPMENT CO.	
CHECKED BY		PROJECT: SW2 - SIDE WASHERS	
QTY		DESCRIPTION: Wrap Motor Mount Frame Assembly	
RELEASE DATE	11/30/2021	PART NUMBER: WA10KA-EL	REV# 2
DIMENSION ARE IN INCHES & PROVIDED PRIOR TO SURFACE TREATMENTS, UNLESS NOTED.		SIZE A	EST WEIGHT:
			SHEET 33 of 36

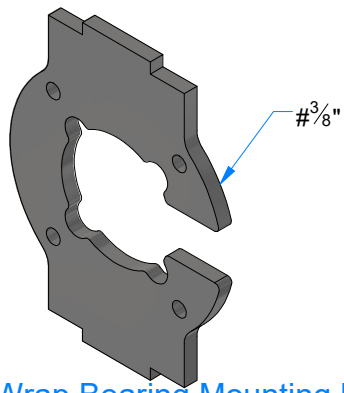
[WMMP \[7 in x 5.125 in\]\[Wrap Motor Mount\]\[5_16 Ga.\]](#)



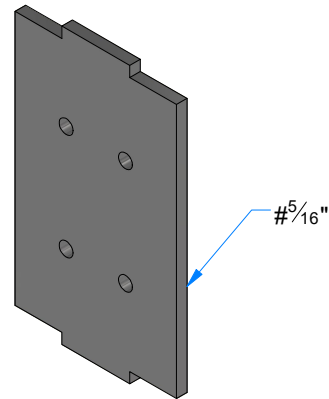
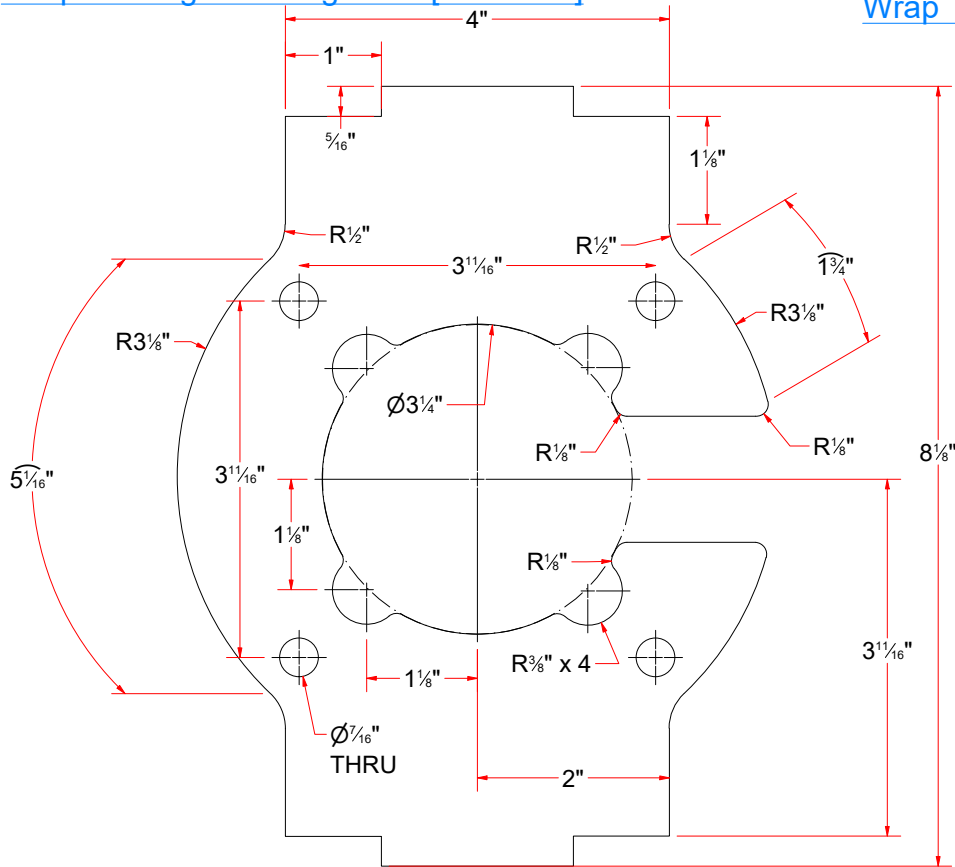
- COMPANY PROPRIETARY NOTE -
THIS DRAWING AND ITS DESIGNS ARE PROPERTY OF AVW EQUIPMENT CO. &
NOT TO BE USED OR REPRODUCED WITHOUT THE PERMISSION FROM AVW CO.

DRAWN BY		Ljubomir		CUSTOMER: AVW EQUIPMENT CO.	
CHECKED BY		PROJECT: SW2 - SIDE WASHERS			
QTY		DESCRIPTION: Wrap Motor Mounting Side Plate [5/16" Ga.]			
RELEASE DATE		11/30/2021		PART NUMBER: WA10KAA-EL	
DIMENSION ARE IN INCHES & PROVIDED PRIOR TO SURFACE TREATMENTS, UNLESS NOTED.		SIZE A		EST WEIGHT:	
				SHEET 34 of 36	

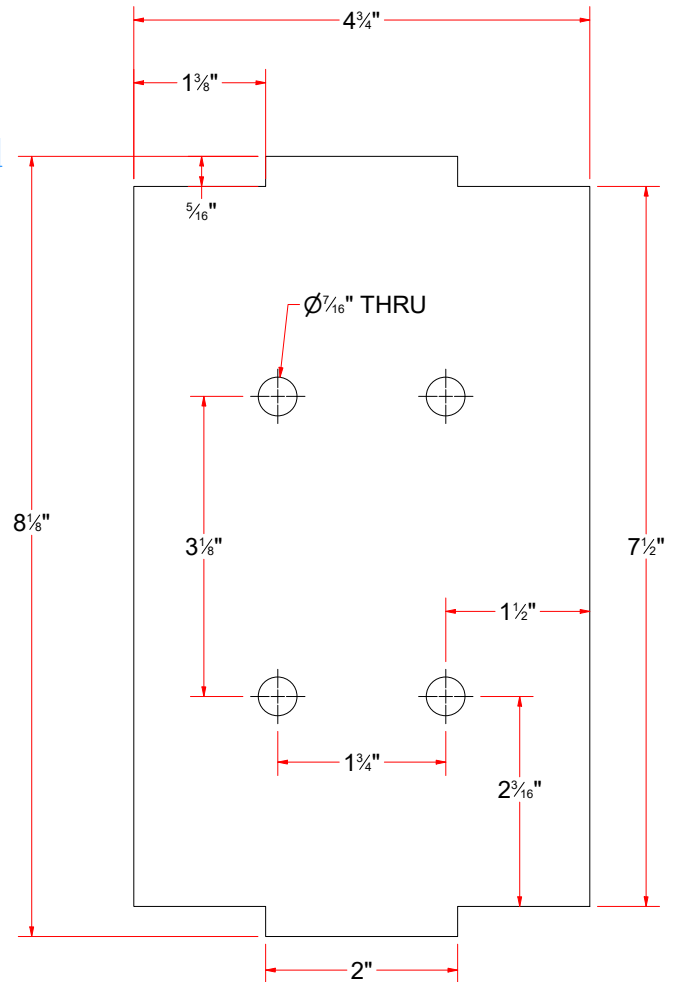
PATH:L:\Libraries\AVW Components\Plates\Motor Mount Plates\Electric Motor Plates\MMP [27.75 in x 5 in][Wrap Motor Mount][5_16 Ga.].ipt



Wrap Bearing Mounting Plate [5/16" Ga.]



Wrap Top Plate [5/16" Ga.]



AVW EQUIPMENT CO., INC.
105 S. 9TH AVENUE
MAYWOOD, IL 60153
Tel: 708-343-7738 Fax: 708-343-9065
WWW.AVWEQUIPMENT.COM

- COMPANY PROPRIETARY NOTE -

THIS DRAWING AND ITS DESIGNS ARE PROPERTY OF AVW EQUIPMENT CO. & IT IS NOT TO BE USED OR REPRODUCED WITHOUT THE PERMISSION FROM AVW CO.

DRAWN BY

Ljubomir

CUSTOMER: AVW EQUIPMENT CO.

CHECKED BY

PROJECT: SW2 - SIDE WASHERS

QTY

DESCRIPTION: Wrap Bearing Mounting Plate [3/8" Ga.]

RELEASE DATE

11/30/2021

PART NUMBER: WA10KAD-EL

REV# 2

DIMENSION ARE IN INCHES & PROVIDED PRIOR TO SURFACE TREATMENTS, UNLESS NOTED.

SIZE A

EST WEIGHT:

SHEET 35 of 36

PATH: L:\Libraries\AVW Components\Plates\Motor Mount Plates\Electric Motor Plates\WBMP [7 in x 5.5 in]\Wrap Bearing Mount\5_16 Ga..jpt

SW10KAB - Shaft Assembly Mount

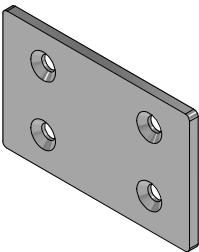
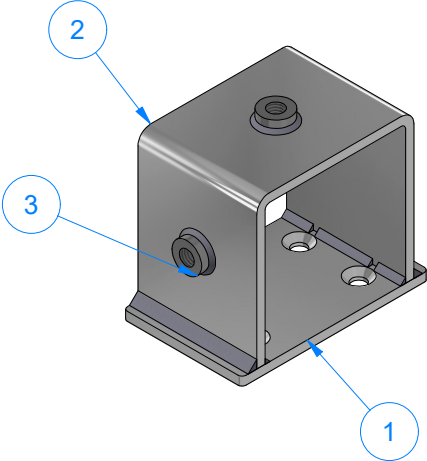
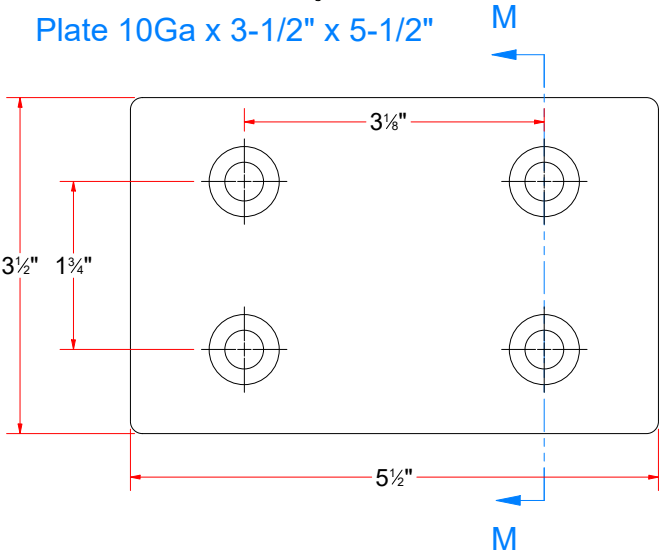
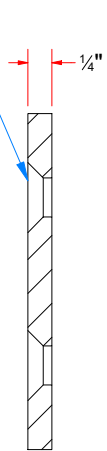


Plate 10Ga x 3-1/2" x 5-1/2"



$\varnothing \frac{7}{16} \nabla \frac{1}{4}$
 $\sphericalangle \varnothing \frac{3}{4} \times 90^\circ$
All 4 Holes



SECTION M-M

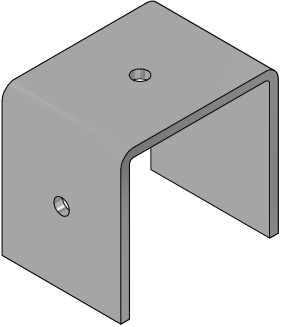
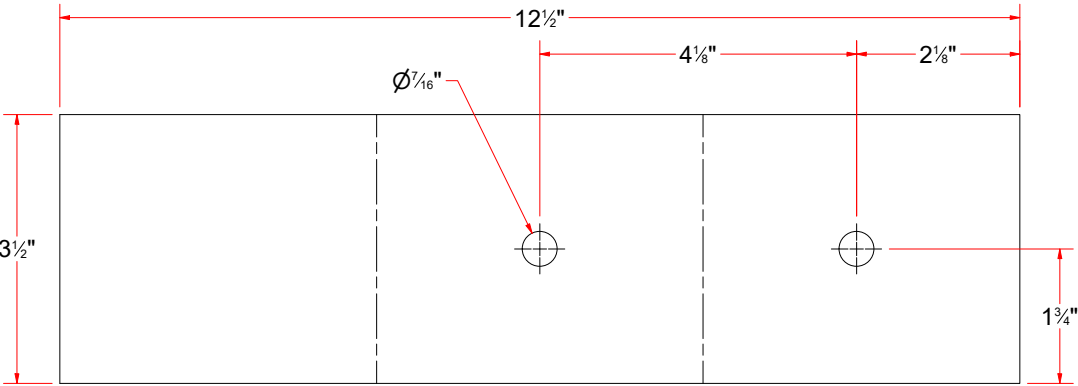


Plate #10Ga x 3-1/2" x 12-1/4"



Flat Pattern



AVW EQUIPMENT CO., INC.
105 S. 9TH AVENUE
MAYWOOD, IL 60153
Tel: 708-343-7738 Fax: 708-343-9065
WWW.AVWEQUIPMENT.COM

- COMPANY PROPRIETARY NOTE -
THIS DRAWING AND ITS DESIGNS ARE PROPERTY OF AVW EQUIPMENT CO. &
IT IS NOT TO BE USED OR REPRODUCED WITHOUT THE PERMISSION FROM AVW CO.

DRAWN BY	Ljubomir	CUSTOMER: AVW EQUIPMENT CO.	
CHECKED BY		PROJECT: SW2 - SIDE WASHERS	
QTY		DESCRIPTION: Shaft Assembly Mount	
RELEASE DATE	11/30/2021	PART NUMBER: SW10KAB	REV# 2
DIMENSION ARE IN INCHES & PROVIDED PRIOR TO SURFACE TREATMENTS, UNLESS NOTED.		SIZE A	SHEET 36 of 36